

Sixth Form Prospectus
Prosbectws y
Chweched Dosbarth



2024

Respect, Determination, Honesty - Parch, Penderfynolrwydd, Gonestrwydd



Contents Cynnwys



01978 760 238

main@castellalun.flintshire.sch.uk

www.castellalun.com

@CastellAlun

**Castell Alun High School, Fagl Lane, Hope,
Flintshire LL12 9PY**

3. Word of Welcome
4. Sixth form Leadership Team
5. Tutors
6. Student Opportunities
7. Why Castell Alun?
8. Community Participation
9. Supervised Study / Welsh Baccalaureate
10. Opportunities for Leadership
11. Music/Drama/Sport
12. Common Room
13. Trips
14. The Seren Network
15. Aiming High at Castell Alun
16. A Level Results 2022
17. Other Information
18. Admissions
20. Your Course Option



EXPRESSIVE ART & TECHNOLOGY

22. Acting Drama
23. Performing Arts
24. Music
25. Art & Design
26. Computer Aided Design
27. Computer Science
28. Design & Technology



HEALTH & WELLBEING

29. BTEC Sport
30. Health, Care & Child Care
31. Physical Education
32. Food & Nutrition PSHE
Health & Social Care



HUMANITIES

33. Business
34. Criminology
35. Economics
36. Geography
37. History
38. Politics
39. Psychology
40. Religious Studies



INTERNATIONAL LANGUAGES

41. Cymraeg
42. French
43. German
44. Spanish



LANGUAGES, LITERACY & COMMUNICATION

45. English Language
46. English Literature



MATHEMATICS & NUMERACY

47. Further Mathematics
48. Mathematics



SCIENCE

49. Biology
50. Chemistry
51. Physics



Mrs Helen Williams
Chair of Govenors

Word of Welcome / Gair o Groeso

Thank you for your interest in joining our Sixth Form at Castell Alun.

This Prospectus will hopefully give you a flavour of life here and a clear understanding of the courses we offer and where they could lead.

We pride ourselves on the quality of our teaching, our outcomes and just as importantly our care, support and guidance for students throughout their post 16 education. As part of a large, happy and close knit community, our Sixth Form students work very hard academically but also enjoy a tremendous range of other opportunities

including, trips, charity work, work experience, competitions and social events.

A great majority of our Sixth Form students go on to study at the university of their choice with other students opting for prestigious higher apprenticeships, employment or college courses. We are very proud of our reputation and the academic and personal success of our students over the years. We value every student highly and aim to provide the best possible support and guidance in helping every learner to maximise his or her potential, whichever path they choose upon successful departure from our school.

Whatever their next step, students remain a part of the Castell Alun family and we are always pleased to hear where life has taken them as they go on to enjoy successful careers in every walk of life.

I hope that you will enjoy our **Sixth Form Open Evening, on Thursday 25th January 2024.**

This will be an opportunity for you to engage with staff and students about the experiences on offer at Castell Alun.

Mr C. Ellis, Headteacher.



Miss Sarah Edwards

Studying in the Sixth Form is going to be one of the most exciting and important stages in your educational career. Not only do you get to focus your studies on those subjects you enjoy the most and which really interest you, at Castell Alun High School you get to do all of that within a supportive and inclusive community.

Here at Castell Alun we actively encourage you to engage in the many opportunities Sixth Form life provides, whether that's going on the many various trips on offer, supporting good causes through the charity committee or by becoming a Sixth Form Ambassador. Being in the Sixth Form is more than just studying, it's being part of a community within the school as well as the wider school as a whole.

The Sixth Form is also here to help prepare you for the next important stage of your life, whether that's going to university, finding an apprenticeship or entering the world of work.

Whatever your aspirations and chosen destination post Sixth Form, we are here to support you and offer you all the help and guidance you need to make a success of your next step.



Miss Lauren Robinson

As the Assistant Director of the Sixth Form, my role is to help support you in achieving your full potential. Part of this role includes ensuring you have the right pastoral support to suit your individual needs and to help promote and foster positive wellbeing within the Sixth Form. I am also responsible for destination planning and work closely with students that are pursuing employment and apprenticeship routes post-18. This includes helping develop important soft skills necessary for the world of work. I work closely with a number of student groups including the Sixth Form Charity Committee to help foster a community spirit in our Sixth Form. I am very proud and privileged to be a part of the Sixth Form at Castell Alun and hope you will enjoy being part of our Castell Alun Sixth Form family!



Mrs Diane Jones

In my role as Sixth Form Administrator, I am here to support students during their study sessions.

The study areas are used by many students during their non-contact time to further their studies in an appropriate learning environment.

I provide support to the Sixth Form Team and the Senior Leadership Team, providing attendance, attainment and conduct data when required.



Sarah Edwards - Director of Sixth Form studies / Assistant Head

sarah.edwards@castellalun.flintshire.sch.uk

Lauren Robinson - Sixth Form Assistant Student Development Manager

lauren.robinson@castellalun.flintshire.sch.uk

Diane Jones - Sixth Form Administrator

diane.jones@castellalun.flintshire.sch.uk



Access to Tutors/SDM?

Every day there is access to a Group Tutor, who will provide academic and non-academic support. The Director of Sixth Form Studies and the Assistant Director are based in the Sixth Form area and are available at all times, as part of our 'Open Door Policy'.

"I am so grateful to Castell Alun for all the time and effort they have given my daughter. Nothing is ever too much trouble if I have an issue it is resolved with prompt communication to let me know what's gone on. I can't rate the school highly enough and I will be forever grateful for everything they have done." - Parent



Class Sizes?

Lessons are taught by subject specialists and class sizes range from single figures to no more than twenty.

Facilities?

The Sixth Form study area, Common Room and Snack Bar are for the use of Sixth Formers only. There are plenty of computers available and an opportunity for silent study.

Advice?

Careers Advice and university advice are readily available with access to Alumni and experts in the field.



Sixth Form Council

Each Tutor Group elects two representatives to sit on the Sixth Form Council. The Council meets on a regular basis and will discuss issues such as the Study Areas, Common Room and external events.

Two members of the Sixth Form Council will be co-opted to sit on the School Council. In addition to this there are Sixth Form committees



Student Ambassadors

The Senior Student Ambassadors are Sixth Form Students, who have been chosen specifically to represent their peers. They are on the School Council and are Associate Governors.

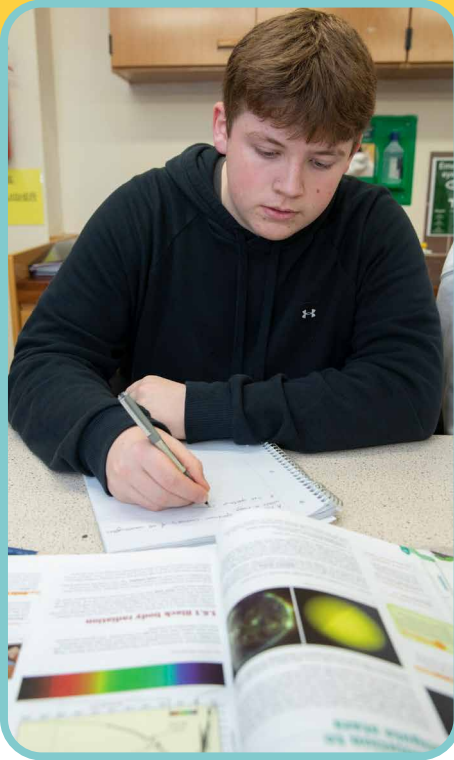
Our Seren Student Ambassadors are heavily involved with Student Voice and act as a link between the students and staff.



Students from other schools

Castell Alun is an 'open' Sixth Form. Students from other schools are welcome to study here.

Last year 25 students joined us from other schools. These students enhance the Sixth Form and quickly become valued and integral members of the senior school.



Why Castell Alun?

We are a school with a Sixth Form, therefore there are numerous opportunities to improve and enhance the skill set of each Sixth Form student as well as their C.V., for instance, coaching in the P.E. department, helping with Numeracy and Literacy lessons as well as being a Teaching Assistant in lessons.

"It was a big change moving to a new school. Castell Alun staff made the transition easy through the welcoming teachers and polite and friendly students in all year groups. I found it easy to make new friendship groups and to settle in to school life. There are lots of extra-curricular activities at the school and you quickly become part of the school community." - Student

All the Sixth Form teachers are very understanding to the struggles that students face and offer help and guidance to support their Sixth Form journey.
- Student

"I have been really impressed by the learning environment at Castell Alun Sixth Form. It encourages you to apply yourself and meet your full potential. You are given plenty of feedback to ensure that you are making progress towards your future aspirations. Teachers are incredibly supportive and will guide you. I have enjoyed the challenge of coming to a new school immensely." - Student



See whats on offer...



The Sixth Form Area

Charity Work and Community Participation

The Sixth Form area offers spacious, modern study and recreational facilities.

It is an integral part of the school and the Common Room and Study Areas allow students a greater degree of independence and responsibility. Study will be timetabled as will free time.

Sixth Form students select a charity to support each year e.g. Operation Christmas Child, Pink Day, Nightingale House Hospice.

By virtue of team work and perseverance, sums of money are raised for the benefit of a selected charity. Students have a wide choice of community activities in which they

can participate. They enjoy working with the wider community of which the school is a part. In this way, young people help those who are much less fortunate than themselves whilst learning vital planning skills in co-ordinating entire events.



Being part of the charity committee is a really rewarding experience which contributes largely to the school and community by organising events that bring everyone together.

- Olivia

Supervised Study

Included in the Sixth Form area are two distinct study areas, one for Year 12 and an additional area for Year 13. These study areas are both supervised and timetabled. Students can use their non-contact time to further their studies in an appropriate learning environment. Independent learning is a vital component of life in the Sixth Form

There is a suite of computers for all students to use to aid their studies. These facilities are open to the Sixth Form from 7.15 am to 6.00 pm and are used by many students outside the normal working hours of the school. This independent study, whilst supervised, enables students to plan their time effectively whilst building on their contact time with their teachers.

The Welsh Baccalaureate Advanced Qualification

The Welsh Baccalaureate is an exciting qualification that adds a valuable new dimension to the subjects and courses already available to students.

It combines personal development skills with a student's option choices to make one wider award that is valued by employers and universities.

The Welsh Government introduced the Welsh Baccalaureate to transform learning for young people in Wales.

It gives broader experiences than traditional learning programmes, to suit the diverse needs of young people.

Sixth Form students at Castell Alun participate in the Welsh Baccalaureate Qualification at Advanced Level.

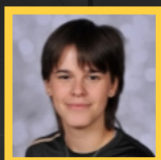
The subject is a significant element of university offers.

Opportunities for Leadership

Sixth Form students are encouraged to develop their leadership skills by taking advantage of the opportunities that working with younger students allow.

For example, as part of the community participation element of the Welsh Baccalaureate, valuable experience for Sixth Form students is the 'Buddy' paired reading scheme with Year 7 students.

Many more opportunities for leadership are available within the Sixth Form, including involvement in lower school lessons as teaching assistants. This also provides valuable experience for a student's personal statement for UCAS.



"My sessions training younger students in rugby with WRU women players taught me how to adapt different style lessons and gave me the opportunity to teach a subject that I am extremely passionate about." – Megan



Duke of Edinburgh

The Duke of Edinburgh Gold Award is offered in Years 12 and 13. Expeditions are taken after the examination season, and have in recent years been to Snowdonia and the Lake District.

Students are fully supported throughout the two years to complete the various sections. It develops a range of skills and is highly regarded by universities and future employers.

"Participation rates in the extra curricular programme, which includes a wide range of sporting, academic and curricular activities, are very high"

ESTYN

Music / Drama



Various musical ensembles are available to the Sixth Form students.

Students take a leading role in many of the Drama and Music productions that take place within the school. Many students enjoy this aspect of extra curricular work and remain very loyal to whole school events. Sixth Form students often take an active part in performing at events which include our feeder primary schools.



Sport

A significant number of students from the Sixth Form have represented the school at County, National and International level in a variety of sports including:

BADMINTON, GYMNASTICS, CYCLING, HOCKEY, GOLF, NETBALL, RUGBY AND FOOTBALL

Sixth Form students are encouraged to coach younger children.

The various sports schemes allow students the opportunity to develop their coaching skills and to gather evidence for accreditation in their Welsh Baccalaureate.

Common Room

This facility is based in the Common Room where students can have their 'down time'. The initiative came about as a direct result of discussions with the Sixth Form Council to improve facilities.

Here students can have the space to socialise in their free time. Many of our charity events are held in here.



Trips

If you want to discover learning outside the classroom, how about trips to ...

Berlin and Krakow with Humanities and German.

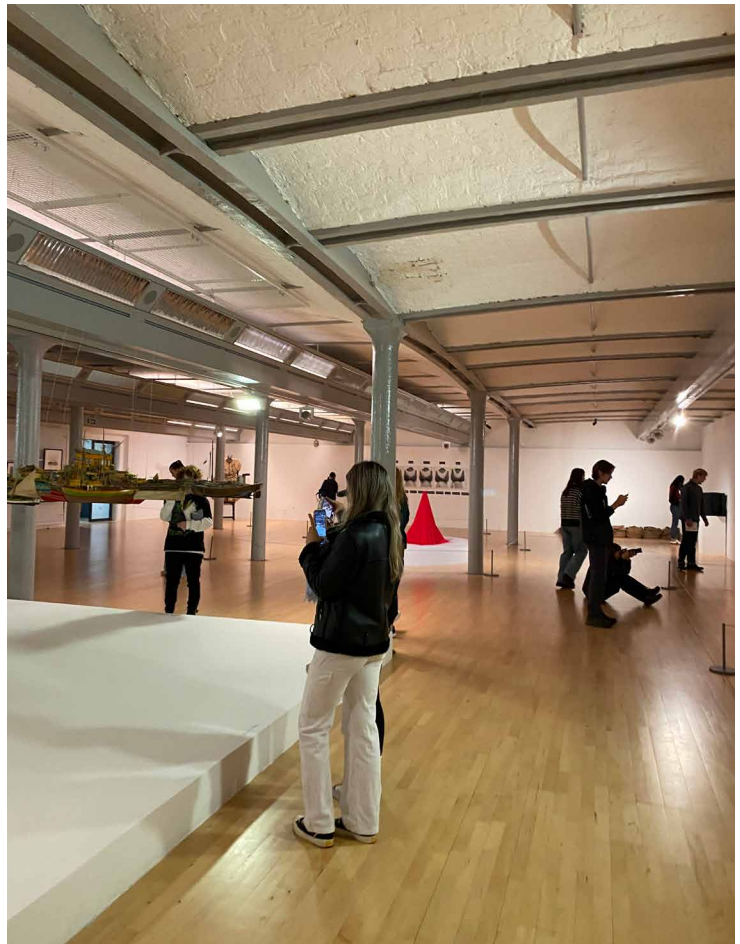
Shrewsbury Prison with Criminology.

Liverpool, the North Wales Coast, the Dee Valley and Snowdonia with Geography.

London with English, **Welsh Language residential course** with cymraeg.

Visits to **Local and National Galleries and Locations for Creative Inspiration** with Art Learning areas

That's just a sample of what's on offer.



The Seren Network

The Seren Network supports high achieving Sixth Formers to reach their academic potential, through a programme of super-curricular activities.



As a member of the Flintshire / Wrexham partnership students will be given information, advice and guidance on how to make a competitive application to leading universities. The local Seren Hwb is a partnership of teachers from schools, and colleges in the area. They are supported by

leading universities, local government and the Welsh Government.

To qualify students must have achieved 5A* or equivalent in their GCSE examinations. For the academic year beginning September 2023, Castell Alun had fifty seven students

who achieved this benchmark.

For more information on the Seren Network and your local hub, visit the Seren Network website:
www.gov.wales/seren

Aiming High at Castell Alun

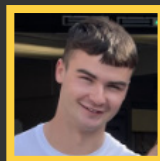
The Russell Group

The Russell Group represents 24 leading UK universities which are committed to maintaining the very best research, an outstanding teaching and learning experience and unrivalled links with business and the public sector.

Russell Group universities play an important part in the intellectual life of the country and have a huge impact on the social, economic and cultural well - being of their regions. Their aim is to ensure that each university has the optimum conditions in which to flourish whilst continuing to make an impact through their world leading research and teaching.

Castell Alun students apply to and attend universities all over the U.K., including Russell Group universities. Where relevant, students are encouraged to apply to Russell Group universities and some of those universities also visit the school. Open days are used to enable students to meet the relevant staff whilst getting a 'feel' for each university.

Last year some 38 Castell Alun Students were successful in their application to Russell Group universities.



"I studied at Castell Alun Sixth Form for two years to complete my AS and A Level examinations.

The facilities, staff and opportunities have left a lasting impact upon me. The Sixth Form uses every possible method to offer students the chance to succeed in their chosen field, whether that be university, apprenticeships or otherwise.

The passion for their subjects and the quality of teaching results in students developing a greater interest in the subjects too.

I remain ever grateful for the commitment shown by staff and hope that future students take advantage of this.

The support provided to me at Castell Alun allowed me to reach the highest possible results which enabled me to then go on to one of the UK's best universities.

The foundations for any student to thrive are already well established within the school. The warmth within this learning environment ensures that all involved feel welcomed, motivated and supported in achieving their unique aims. The staff take pride in helping you find your goals or in making them possible."

- Harry

Studying Business Management with
German at Bath University

A Level Results 2023

A Level Subjects	Entries	A*	A	B	C	D	E	U	A*-A	A*-B	A*-C	A*-E
Art & Design GCE / A	9	0	2	4	2	1	0	0	2	6	8	9
Biology GCE / A	18	9	0	5	2	1	1	0	9	14	16	18
Chemistry GCE / A	14	7	2	1	2	2	0	0	9	10	12	14
Computer Studies/Computing GCE	5	0	0	2	0	2	1	0	0	2	2	5
D&T Product Design GCE / A	7	0	1	0	2	1	3	0	1	1	3	7
Economics GCE / A	9	1	2	2	3	1	0	0	3	5	8	9
English Language GCE / A	6	1	1	1	3	0	0	0	2	3	6	6
English Literature GCE / A	8	4	1	1	1	1	0	0	5	6	7	8
French GCE / A	1	1	0	0	0	0	0	0	1	1	1	1
Geography GCE / A	20	3	5	5	3	3	1	0	8	13	16	20
German GCE / A	6	3	1	2	0	0	0	0	4	6	6	6
Health & Social Care GCE / A	10	0	1	2	3	3	1	0	1	3	6	10
History GCE / A	17	3	1	9	3	1	0	0	4	13	16	17
Mathematics GCE / A	27	7	7	6	2	3	2	0	14	20	22	27
Mathematics Further GCE / A	2	0	0	1	1	0	0	0	0	1	2	2
Sport/PE Studies GCE / A	12	2	3	3	2	1	1	0	5	8	10	12
Physics GCE / A	14	1	0	4	4	4	1	0	1	5	9	14
Politics GCE / A	6	1	2	1	2	0	0	0	3	4	6	6
Psychology GCE / A	33	1	8	7	9	6	2	0	9	16	25	33
Religious Studies GCE / A	9	3	2	2	1	1	0	0	5	7	8	9
Welsh (Second Language) GCE / A	2	0	1	1	0	0	0	0	1	2	2	2
MED SCI Biology (Human) L3 / L3	6	0	1	1	3	1	0	0	1	2	5	6
CRIMINOLOGY Social Science L3	27	1	0	11	14	1	0	0	1	12	26	27
Overall totals (exc WBQ)	268	48	41	71	62	33	13	0	89	160	222	268
Baccalaureate WBQ / A	54	1	13	20	13	7	0	0	14	34	47	54
Overall totals (inc WBQ)	322	49	54	91	75	40	13	0	103	194	269	322

Vocational Subjects	Numbers achieving											Percentage			
	Entries	D*	D	M	P	D1 (D*D*)	D2 (D*D)	DD	DM	MM	MP	PP	Distinction or above	Pass or above	
Nutrition / Diet L3 / L3	3	0	0	2	1	0	0	0	0	0	0	0	0	0	100
Set Design BTEC / SD3	1	0	0	0	1	0	0	0	0	0	0	0	0	1	100
Business and Finance BTEC / EC3	27	5	14	7	1	0	0	0	0	0	0	0	19	70	100
Dance BTEC / EC3	4	0	1	3	0	0	0	0	0	0	0	0	1	25	100
Sports Coaching BTEC / EC3	6	0	2	3	1	0	0	0	0	0	0	0	2	33	100
Stage Management BTEC / SD3	1	0	0	1	0	0	0	0	0	0	0	0	0	0	100

Other information Gwybodaeth Arall

Sixth Form Dress Code

Uniform requirement is relaxed in the Sixth Form but students are expected to set an example to younger children in school.

The following 'dress code' has been devised by the Sixth Form and we would appreciate wholehearted co-operation from students and their parents in this matter:

Appropriate T-shirts, polo shirts, rugby tops and shirts/ blouses are the norm, but we would ask that students refrain from showing a bare midriff or wearing items which may be considered offensive.

Sixth Form students are most welcome to wear smart jeans or in the summer tailored shorts.

These should not be too short or sports / swimming style shorts.

Please be aware that we are a Sixth Form within a school, and that Sixth Form students set examples for others to follow.

Admissions

Students wishing to access courses at Sixth Form must meet the following entry requirements:

AS courses:

A minimum of 5 A* - C grades at GCSE or BTEC.

A2 Courses:

At least an E grade on the corresponding AS course.

In all cases a good attendance record during KS4 education is required.

We do take into account extenuating circumstances.



Education Maintenance Allowance (EMA)

From September 2014, students in Wales are eligible for an Education Maintenance Allowance, if they are aged 16, 17 or 18 years old on 31st August 2023.

If you are the only young person in full time education in your household and your household income is less than £20,817, then you could receive £40 per week.

If there are other young people in full time education, who also qualify for child benefit in your household, and your household income is less than £23,077 then you could receive £40 weekly.

Further information is available from:
www.studentfinancewales.co.uk/ema
or you can call 0845 602 8845





January

Individual Interviews with SDM

January

Year 11 - 12 Promotional Talks
Year 11 Mock Exams
25th January 2024 Open Evening

8th March

Application Form Deadline

25th June

Induction Day for External Students
(provisional)

22nd August

GCSE Results: Support & Guidance

2nd September

Sixth Form Enrolment

Throughout personal tours of the
school can be arranged

Year 11 – 12 Transition Admissions Procedure

A group of five students (three boys and two girls) are sitting at a long wooden table in a classroom, smiling and looking towards the right. They are dressed in formal attire. The background shows a window with a view of a parking lot and a building, and a whiteboard with some papers pinned to it.

Your Course Options

Eich Opsiynau Cwrs

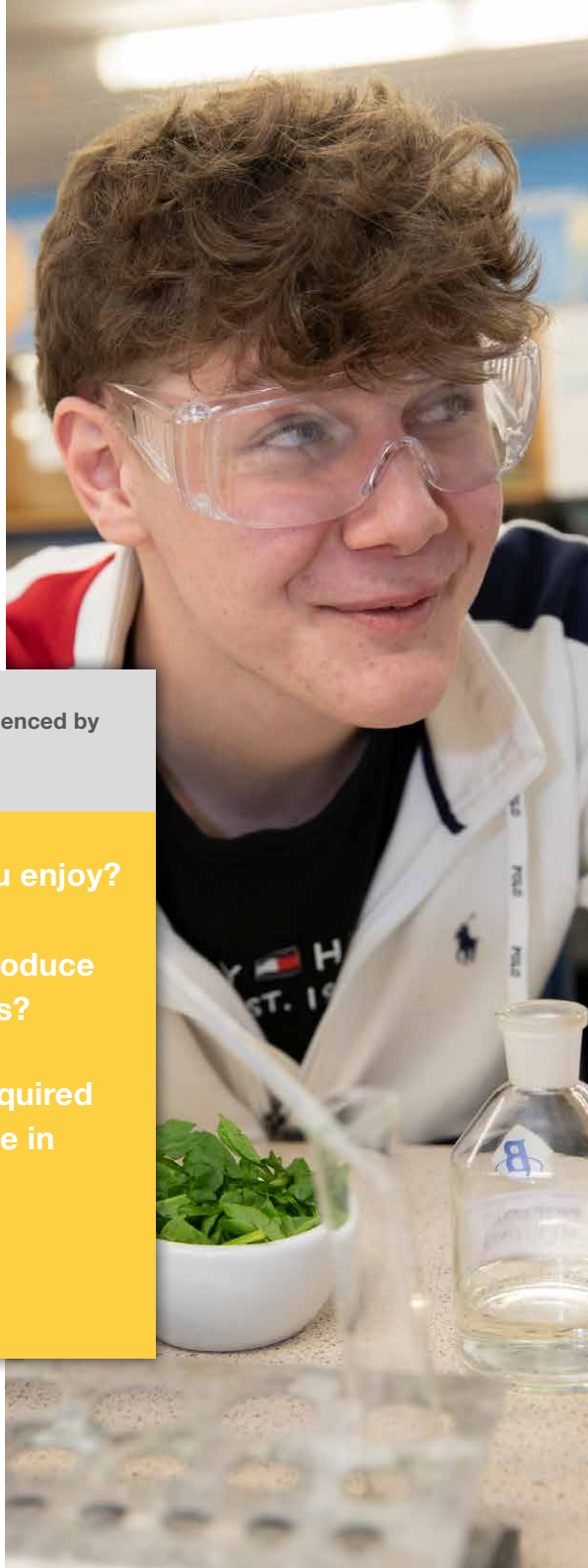
What's Your Next Step...

Which Course to Follow?

Pa Gwrs I'w Ddilyn?

Your choice of subjects will be influenced by three interacting considerations:-

1. Which subjects do you enjoy?
2. Which subjects will produce your best exam results?
3. Which subjects are required for the career you have in mind?



Your present interest in a subject is usually a realistic guide to the choice you should make but be careful!

Subjects can change substantially between Year 11 and the Sixth Form, concentrating on different aspects and demanding an alternative style of work.

Subjects you find dull now may be much more attractive to you at Sixth Form level and of course, vice versa.

You may also wish to study a subject not offered at GCSE.

It may be difficult to predict your summer exam results. While mock exams will give an indication, your **teachers** will know if you have the ability to study their subject.

Their advice is invaluable ...
Take advantage of it.

There are certain combinations of subjects that you must take if you wish to pursue specific careers. This requires specialist help which you can obtain from the Director of Sixth Form Studies and her team, Learning Managers and Subject Teachers.

Qualification: **Level 3**

Exam Board: **BTEC**

Course Director: **Miss S Nesbitt**

Subject Staff: **Mrs Rebecca Lloyd-Jones**

Option: **2**

Performing Arts, Acting

Celfyddydau Perfformio, Actio

Btec National Extended Certificate in Performing Arts – Equivalent to one A-Level

The Extended Certificate is for learners who are interested in learning about the performing arts sector alongside other fields of study, with a view to progressing to a wide range of higher education courses, not necessarily in performing arts. It is designed to be taken as part of a programme of study that includes other appropriate BTEC Nationals or A Levels.

Assessment is specifically designed to fit the purpose and objective of the qualification. It includes a range of assessment types and styles suited to vocational qualifications in the sector. These include a range of external, internal and synoptic assessments.

Evidence is in the form of ongoing practical assessments and a Performer's Reflective Journal.

There is one pathway to choose from in this option line which is acting.

Acting Pathway

Key Units include: Acting Styles, Developing the Voice for Performance, Improvisation, Movement in Performance, Physical Theatre Techniques, Developing Skills and Techniques for Performance



"Performing Arts allows me to be my true self. We are given lots of encouragement within this department to explore our abilities, show your funside and be who you want to be". – Seren

Performing Arts, Dance & Production

Celfyddydau Perfformio, Dawns a Cynhyrchu

Btec National Extended Certificate in Performing Arts – Equivalent to one A-Level, with the option to increase the qualification to a diploma.

The Extended Certificate is for learners who are interested in learning about the performing arts sector alongside other fields of study, with a view to progressing to a wide range of higher education courses, not necessarily in performing arts. It is designed to be taken as part of a programme of study that includes other appropriate BTEC Nationals or A Levels.

Assessment is specifically designed to fit the purpose and objective of the qualification. It includes a range of assessment types and styles suited to vocational qualifications in the sector. These include a range of external, internal and synoptic assessments.

Evidence is in the form of ongoing practical assessments and a performer's Reflective Journal.

There are two pathways to choose from in this option line: Dance or Production.

Dance Pathway	Production Arts Pathway
Key Units include: Developing Skills and Techniques for Live Performance, Performing Arts in the Community and Contemporary, Street and Jazz Techniques.	Within Production there are four further pathways that can be taken and they are: Theatre Technology – Stage Lighting Design and Stage Sound Design Stage Management Costume Design Set Design

Qualification: **Level 3**

Exam Board: **BTEC**

Course Director: **Miss Sharon Nesbitt**

Subject Staff: **Miss Sharon Nesbitt**
Miss A Venn

Option: **3**



Qualification: **AS / A2 Level**

Exam Board: **WJEC**

Course Director: **Mr Andrew Searson**

Subject Staff: **Mr Andrew Searson**
Miss Katy Gittins

Option: **1**



Music

Cerddoriaeth

A Level Music allows students to develop sufficient expertise for further study and to promote an appreciation and enjoyment of music. Whilst considerable commitment is required, the rewards are worthwhile. The deeper knowledge and appreciation of music gained will arm students with lifetime skills and give access to the wide ranging music scene which exists within school, locally and around the country.

Extra Curricular activities include:

- School, County, 4 Counties, North Wales and National ensembles
- Selected concert visits;
- Free Instrumental tuition and option to gain additional qualifications with Associated Board Practical Examinations.

Music combines well with many subject areas:

- As a Performing/Creative Art for closely related further study in Art, Dance and Drama;
- Increasingly with Sciences in the light of modern technology;
- Traditionally with English and Modern Languages.

Music may be studied at University or Music Conservatoire.

Careers to consider include teaching, performing, broadcasting, journalism, the recording industry, publishing, library work, retail trade, concert management, musical instrument technology, music therapy, music in the armed services, arts administration and many other avenues within the arts.

Art & Design

Celf a Dylunio

A Level Art and Design is a subject for students who take real pleasure in a wide range of creative practices.

The course will develop your ability to appreciate the visual world and to respond in a personal and innovative way. It will also develop you as a creative thinker, fostering the ability to research, evaluate, and develop personal ideas to a conclusion.

The skills you will develop will be varied. Among them, you will acquire a working knowledge of traditional materials and techniques as well as working with new media and technology.

You will analyse artists and designers from the past and present and use sources to inspire your own work. You will use skills learned to interpret, convey and synthesise your ideas and feelings through art, craft and design.

Students with AS or A2 Level Art have a wide range of possible career and Higher Education courses to choose from.

Art at advanced level is specifically required for entry into Colleges of Art, Design and Architecture and is regarded as an entrance qualification for a number of College and University courses.

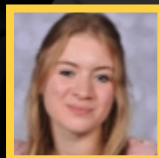
Qualification: **AS / A2 Level**

Exam Board: **WJEC**

Course Director: **Mrs Mary Mason-Bernardi**

Subject Staff: **Mrs Katy Jones**

Option: **2**



"I love A Level Art because the teachers give us the freedom to explore our styles"
- Sali

Qualification: **City & Guilds**
Course Director: **Mr Philip Barnes**
Subject Staff: **Mr Philip Barnes**
Mrs Susan Woodall

Option: **3**

Computer Aided Design

Dylunio Gyda

Chymorth Cyfrifiadur

This course is designed for students looking to obtain an advanced level qualification in 3D parametric modelling. All qualifications follow the same format with 2 class based assignments and 1 short test; available for all students based upon their prior level of experience, these include:

Level 1 - Contains the following topics, Simple/Complex 2D Sketches and 3D Modelling Techniques.

Level 2 - Contains all of the above topics as well as Part Constraints, Spreadsheets (Parameters) and Engineering Drawings.

Level 3 - Contains all of the above topics as well as Complex 3D Modelling and Sheet Metal Work.

Each of the 3 sections that make up the level grade is equally weighted and must be successfully completed. On successful completion of the course it is hoped that candidates will use their newly acquired skills to pursue a career in any one of the following disciplines:

**Architectural / Interior or Product Design;
Jewellery / Packaging Production; Civil / Industrial
or Aeronautical Engineering to mention but a few.**



"Product Design is the very best subject for creative individuals. We have entire creative freedom for our personal projects and the friendly staff offer their expertise to help us where necessary" - **Maddison**

Computer Science

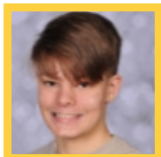
Cyfrifiadureg

This qualification encourages students and allows participants to become proficient programmers, developing a broad range of programming skills and knowledge and understanding of computing systems.

Academic Criteria: GCSE ICT/Computer Science or Cambridge Nationals ICT would be an advantage but not essential. GCSE English Language and Mathematics, Grade C or above.

During this course students will develop:

- The fundamental principles and concepts of computer science, including logic, algorithms and data representation;
- the ability to analyse problems in computational terms through practical experience;
- the capacity for thinking creatively, innovatively, analytically, logically and critically;
- mathematical skills in binary and boolean algebra;
- understanding legal and cultural opportunities and risks of digital technology.



"Initially I struggled with programming but with some extra support from Mr Mitchell I was able to understand and fix the errors" - George

Qualification: **AS / A2 Level**

Exam Board: **WJEC**

Course Director: **Mr Carl Mitchell**

Subject Staff: **Mr Carl Mitchell**

Option: **4**



Qualification: **AS / A2 Level**

Exam Board: **WJEC**

Course Director: **Mr Philip Barnes**

Subject Staff: **Mr Philip Barnes**
Miss Paula Jones
Mrs Susan Woodal

Option: **4**

Design & Technology

Dylunio a Thechnoleg

As a 3D designer you are at the crossroads of a number of skills. You need creativity, in order to imagine the shape and function of the object, but you'll also need to know about manufacturing process, materials and environmental issues.

Your A Level studies covers these main topics:-

In **'Materials, Components and Application'** - you'll look at materials, production processes and the impact of cost and design.

In **'Learning through Designing and Making'** you'll produce some coursework using your own design with a range of materials and media.

In the second year you'll get to grips with **'Design and Manufacture'** - helping you to appreciate the relationship between design and technology, or form and function. **'Design and Making in Practice'** is the practical, coursework part.

You'll make an object and record the process that you went through.

This course could take you into **architecture, teaching, manufacturing, advertising or engineering.**



BTEC Level 3 Sport Chwaraeon BTEC Lefel 3

Qualification: **Level 3**

Exam Board: **Edexcel**

Course Director: **Mrs Sarah Thomas**

Subject Staff: **Mrs Sarah Thomas**
Mr Nick O'Connell

Option: **4**

Overall this subject is based on the interaction between the theory and practice of sport in industry and will provide an excellent foundation for students who wish to pursue careers in teaching and coaching, sports development, the leisure industry, recreational management, the health and fitness industry and professional sport.

This course is a mixture of examination based units and course work.

Students can opt for this subject as a Single Award or Double Award.

The National Certificate in Sport is worth one full A Level.

The Nation Diploma in Sport is worth 2 full A Levels.



"I decided to take BTEC Sport at A Level because during GCSE P.E. I really enjoyed learning about the different systems in the human body, as well as participating in the physical, practical activities". – **Maya**



Qualification: **AS / A2 Level**

Exam Board: **WJEC**

Course Director: **Mrs Shan Williams**

Subject Staff: **Mrs Shan Williams**
Miss Kelly Vaughan

Option: **2**

Health, Care & Child Care Iechyd, Gofal a Gofal Plant

A Level Health and Social Care will comprise of four units in total over the two years of study. In Year 12 these are:

- Promoting health and wellbeing
- Supporting health, wellbeing and resilience in Wales

In Year 13, students follow the childhood pathway:

- Theoretical perspectives of children and young people's development
- Supporting the development, health, well-being and resilience of children and young people

Assessment is by means of 50% examination and 50% non-exam assessment.

Course content will include topics such as concepts of health and wellbeing, social and economic determinants of health, trends, strategies and health legislation, government initiatives, and services to support health and wellbeing in Wales.

This subject equips students with the skills required for higher education and aims to create independent learners that can make informed decisions about further learning opportunities or continuing into related career choices. It complements a wide range of other A-level / BTEC/Diploma courses and can lead to careers such as midwifery, nursing, physiotherapy, social care, education, counselling, occupational therapy, community and health development.



Physical Education

Addysg Gorfforol

A Level Physical Education takes a multidisciplinary approach in developing an understanding of many different areas of sport. This course allows students to build on existing knowledge and learn about new aspects of sport in detail including Exercise Physiology, Biomechanics, Coaching Process, Sports Psychology, Skill Acquisition and Sport in Society.

Students should be participating in a sport regularly and to a good standard as this course draws together theory and practical performances. Participation must be as a performer and as a coach or official in Year 12. Recorded evidence will be necessary.

Overall, this course is based on interaction of theory and practice of Physical Education and will provide an excellent foundation for students who wish to pursue a career in teaching and coaching, sports science, physiotherapy, sports development, the leisure industry, recreational management and professional sport.

Qualification: **AS / A2 Level**

Exam Board: **WJEC**

Course Director: **Mrs Beccy Rowlands**

Subject Staff: **Mrs Beccy Rowlands**
Mr Nick O'Connell

Option: **1**



Qualification: **Level 3 Diploma**

Exam Board: **WJEC**

Course Director: **Mrs Maxine Molloy**

Subject Staff: **Mrs Maxine Molloy**

Option: **1**



Progression

Together with relevant Level 3 qualifications such as AS and A Levels learners will gain the required knowledge to progress to higher education degree courses, such as:

Food Science, Food Technology, Hospitality and Catering, Healthcare, Nursing, Health and Social care, Sport Science and Teaching

WJEC Level 3 Diploma in Food Science and Nutrition

CBAC Diploma Lefel 3 mewn Gwyddor Bwyd a Maeth

An understanding of food science and nutrition is relevant to many industries and job roles. Care providers and nutritionists in hospitals use this knowledge, as do sports coaches and fitness instructors. Hotels and restaurants, food manufacturers and government agencies also use this understanding to develop menus, food products and policies support healthy eating initiatives. Many employment opportunities within the field of food science and nutrition are available.

Qualification structure and content

The WJEC Level 3 Diploma in Food Science and Nutrition is made up of four units:

- Meeting the Nutritional Needs of Specific Groups
- Ensuring Food is Safe to Eat
- Experimenting to Solve Food Production Problems
- Current Issues in Food Science and Nutrition
- Skills to Ensure your own Dietary Health and Wellbeing

Learning experience

- Skills required for independent learning and development
- A range of generic and transferable skills
- The ability to solve problems
- The skills of project based research, development and presentation

All units within the WJEC Level 3 Diploma in Food Science and Nutrition are vocationally relevant to the food production industry.

BTEC Business

BTEC Busnes

BTEC Business enables students to gain both theoretical understanding of the business world while developing practical 'soft skills' necessary for the real world of work.

In year 1 you will become familiar with the environment in which businesses make effective use of resources and how to successfully market to different target audiences.

Year 2 gives students the opportunity to develop crucial accountancy skills and the opportunity to gain real work experience through the Work Experience module.

The course is assessment through 42% internal controlled assessments and 58% synoptic external assessments. We work with the Chamber of Commerce in the North West and Wales which gives students the opportunity to network with business sponsors and interaction with real successful business and entrepreneurs.

Qualification: **BTEC Business**

Exam Board: **ED EXCEL**

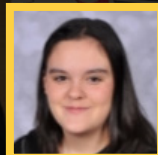
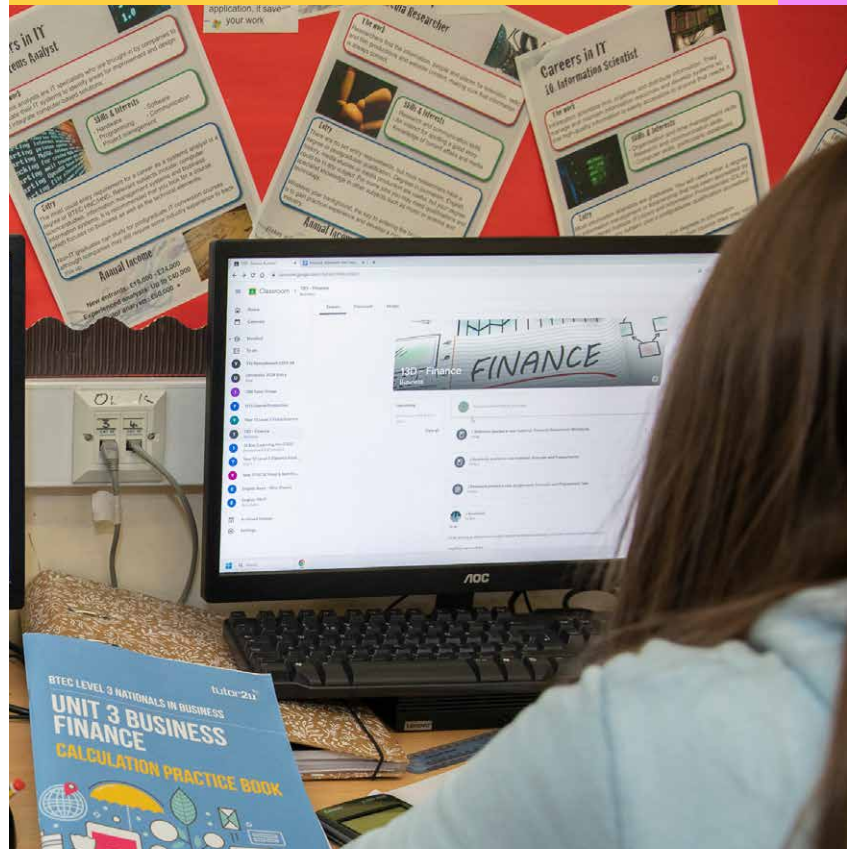
Course Director: **Miss Beth Wray**

Subject Staff: **Miss Lauren Robinson**

Mr Jordan Rowlands

Miss Beth Wray

Option: **4**



'A Level Business teaches you skills that are transferable to other subjects. The teachers are always supportive and encourage you to do well' - Freya

Qualification: **Applied Certificate and Diploma in Criminology**

Exam Board: **WJEC**

Course Director: **Mr Thomas Bryan**

Subject Staff: **Mr Thomas Bryan**

Option: **1**

Applied Certificate and Diploma in Criminology

Tystysgrif a Diploma Gymhwysol mewn Trosedddeg

Criminology will appeal to students who are interested in criminal justice and may be considering careers in related areas. Criminology combines well with a variety of subject areas such as Law, Sociology and Psychology.

Criminology is the study of the nature, extent, causes, and consequences of crime and criminal behaviour in society. We also consider the nature of the criminal justice system, and the experiences of those involved in it – including offenders, victims, police officers and others.

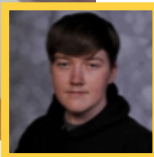
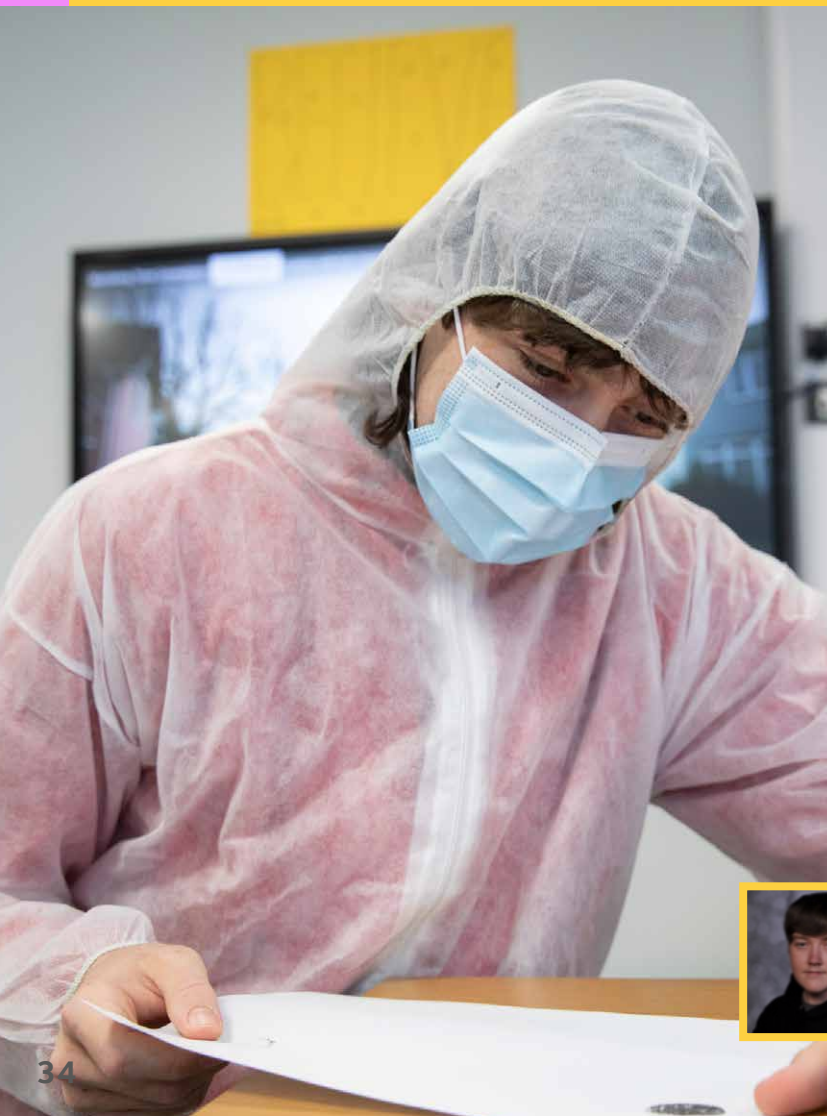
Topics covered are: Changing Awareness of Crime, Criminological Theories, Crime Scene to Courtroom, Crime and Punishment. The course draws on theories, case studies and engagement with professionals.

So if you are interested in:

- Why not all types of crime are alike?
- What different types of crime take place in our society?
- How do we decide what behaviour is criminal?
- What is the difference between criminal behaviour and deviance?
- How do we explain why people commit crime?
- What happens to those who commit a crime?
- Why and how do we punish people?
- What organisations do we have in our society to control criminality?

The Certificate and Diploma will give you all this, and an excellent foundation for degree or vocational qualifications.

"Criminology is great if you are interested in True Crime. You get to learn about the complexity of cases and an insight in to the criminal process." – Logan



Economics

Economeg

Economics is a social science that studies the allocation of scarce resources. It is a course aimed at learners that are interested in the economic impact of current affairs. You might be wondering:

Have you wondered:

- What causes a cost of living crisis?
- How does a cut in taxation impact the economy?
- Why do industries keep going on strike?
- Why is Brexit still in the news?
- How might AI change how businesses operate?

If you are, Economics tries to provide answers to these questions.

The course is split into two key strands:

- Microeconomics which focuses on decision-making by individuals and firms within the economy
- Macroeconomics which focuses on the economy as a whole

During the course you will develop an understanding of economic concepts and theories through critical consideration of current economic issues, problems and institutions that affect everyday life, drawing on local, national and global contexts.

The course is 100% examination - 40% at AS and 60% at A Level.

The subject compliments a range of subjects including Business, Geography, History, Maths, RS and the Sciences.

Qualification: **AS / A2 Level**

Exam Board: **WJEC**

Course Director: **Miss Lauren Robinson**

Subject Staff: **Miss Lauren Robinson**
Mr Jordan Rowlands

Option: **2**



Qualification: **AS / A2 Level**

Exam Board: **WJEC**

Course Director: **Mr Andrew Hodgson**

Subject Staff: **Mrs Hannah Hughes**
Mr James Fowles

Option: **2**

Geography

Daearyddiaeth

Geography is the study of the Earth and its human population. At A Level you will study the physical environment, the impacts of human activity and relationships between nations.

Course Summary:

AS Geography Year 12: Changing Places and Changing Landscapes.

A2 Geography Year 13: Global Systems and Global Governance.

Contemporary Themes
in Geography.

Independent Investigation.

A - Level geographers develop the key skills associated with research, problem-solving and analysis in both science and humanities. Assessment methods include data response questions and extended writing. Fieldwork is an integral part of the course. Given the diverse nature of the topics studied, A-Level Geography provides a firm foundation for further education and future careers.



History

Hanes

It is not a requirement that you have studied History as GCSE in order to take A Level History, as a number of the topics offered are likely to be new to most students. It is more important that you have an enquiring mind, an interest in the past and its relevance to current affairs and an ability to communicate your ideas effectively.

History isn't just about learning facts and dates, far from it! As well as studying those important periods in history and the fascinating effect they have had on the world, you will also develop a variety of skills which are highly coveted and of benefit beyond the study of History. Consequently, History complements the study of most other A Level subjects, from the other Humanities and English to Science and Maths.

Studying History will help develop skills in analysis and evaluation and communication, both oral and written. History is about solving puzzles, seeing the bigger picture, making connections and drawing conclusions. Studying History is about being perceptive and critical, knowing the difference between truth and opinion and about forming your own opinions using well supported and developed arguments.

It is due to the wide variety of skills that you develop through the study of History that universities consider the subject in high regard. History is seen as a highly useful qualification for a variety of Higher Educational and Career choices, providing an excellent foundation for a number of popular careers, including journalism, law, business, accountancy and teaching, to name but a few.

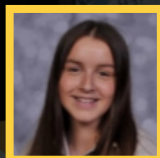
Qualification: **AS / A2 Level**

Exam Board: **WJEC**

Course Director: **Miss Ffion Byrne**

Subject Staff: **Miss Sarah Edwards
Mrs Helen Cadman
Miss Ffion Byrne
Miss Emma Edwards**

Option: **3**



'History has taught me so many skills which are very useful across all my subjects. I have been able to develop my essay writing and analytical skills, as well as deepening my knowledge on the subject' - Lottie

Qualification: **AS / A2 Level**

Exam Board: **WJEC**

Course Director: **Miss Sarah Edwards**

Subject Staff: **Miss Sarah Edwards**
Miss Ffion Byrne

Option: **4**

Politics

Gwleidyddiaeth

Why study Politics? Simply because it affects everything you do! The age you can marry, drink alcohol, join the armed forces, vote and drive is all decided by politicians. They also decide how loudly you can play music, whether you stand up or sit down at football matches, what you study in school and so much more that affects your daily lives.

This course allows students to develop a good understanding of Welsh, British, and International politics. At a time of enormous political tension and change in the world, students will find the debates which are central to this subject fascinating. This subject is highly prized by universities and links well with other Humanities, English, Business and Law courses.

This course will appeal to those students who want to become better informed citizens and who have an interest and want to explore and develop their own political beliefs and opinions in particular. This course will appeal to students who want to know why Wales and the rest of the UK are governed as they are.

Students with AS or A2 Level Politics have a wide range of possible career and Higher Education opportunities open to them.

You will learn skills which are in great demand by employers and universities, such as:

- development of written and oral communication;
- development of problem solving and evaluation;
- researching and analysing information from different sources;
- working independently and as part of a group.



Psychology

Seicoleg

Psychology is an intriguing and complex study of the workings of the human mind and behaviour. Studying Psychology will allow you to gain an understanding of the underpinnings of a wide range of behaviours, such as their biological, social, psychological, cognitive and developmental explanations.

Psychology will be of particular relevance to those who:

- want to find out more about the link between people's behaviour and their environment;
- enjoy exploring topics which reflect current contemporary issues;
- enjoy planning and carrying out investigations to look for patterns in behaviour;
- have achieved success in English Language, Mathematics and Biology at GCSE level.

Topics studied across both AS and A2 level include relationships and happiness, criminal behaviour, schizophrenia, autism, eye-witness testimony, therapies including dream analysis, and phobias.

Progression from studying this subject will lead you to a wide range of courses at university and the transferable skills and knowledge you will gain will give you an excellent grounding for an array of career opportunities.

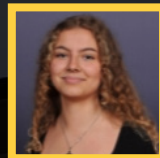
Qualification: **AS / A2 Level**

Exam Board: **WJEC**

Course Director: **Mrs Nicole Trueman**

Subject Staff: **Mrs Nicole Trueman**
Miss Lisa Jones

Option: **3**



"I enjoy studying Psychology as it is very insightful into the reasons for different behaviour. The teachers are very motivational and make the lessons very engaging." - Nadia

Qualification: **AS / A2 Level**

Exam Board: **WJEC**

Course Director: **Mrs Gemma Doran**

Subject Staff: **Mrs Gemma Doran**
Mrs Emma Whitehurst

Option: **2**

Religious Studies

Astudiaethau Crefyddol

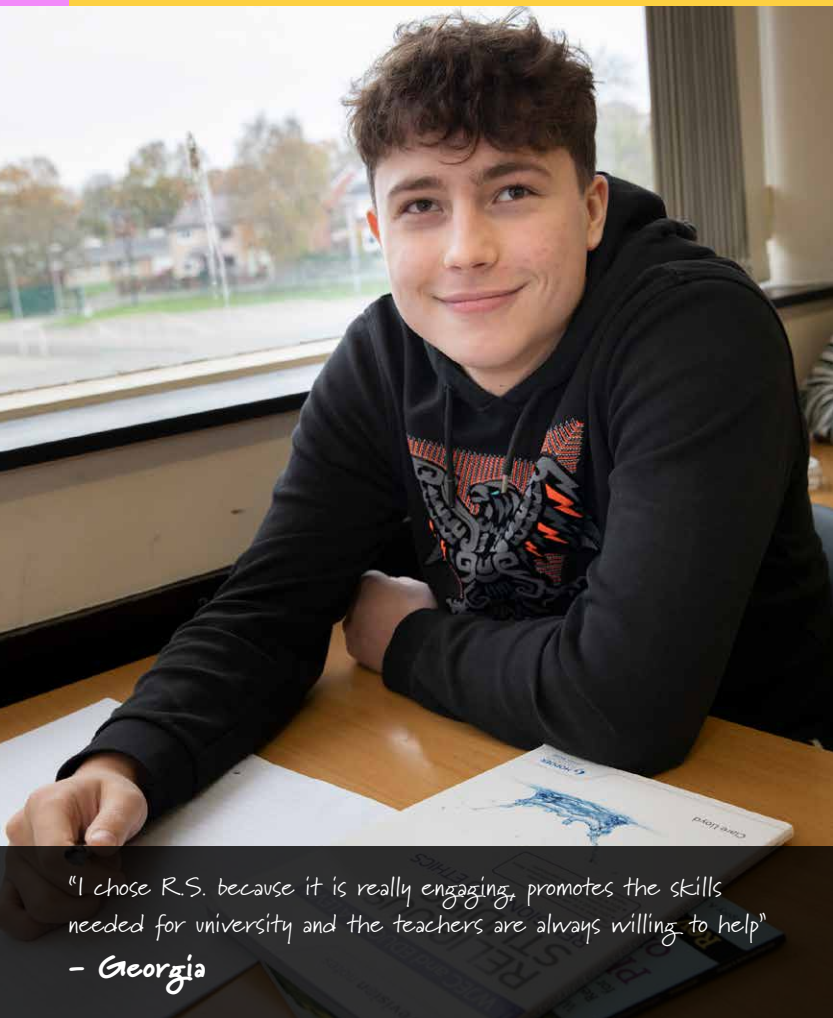
This is an exciting course giving you the opportunity to study some of the fundamental philosophical and ethical questions which people have always asked about life. You will have the opportunity to gain a deeper awareness and understanding of religion and its influence on society.

If you:

- enjoy debate and putting forward well argued cases;
- are interested in what people consider right or wrong, in the way in which they decide how they ought to act or what their duty is;
- want to broaden science or an advanced studies to include a humanities subject.
- have an interest in religion in general or a specific faith, or if you wish to follow an ethical approach to religion;
- want to develop a wide range of transferable skills.

Religious studies develops highly marketable, transferable skills in analysis, evaluation and persuasive writing.

The skills developed in this course are particularly useful for careers in law, education, social work, politics, medicine, administration or the media.



"I chose R.S. because it is really engaging, promotes the skills needed for university and the teachers are always willing to help"

- Georgia

Cymraeg

Welsh

The course will assist you to become a more independent learner in preparation for the world of work or Higher Education. You will be learning to communicate to a very high level in the language and you will learn about further aspects of Welsh life and culture.

Llafar / Speaking

By the end of the course, if you work with enthusiasm, you will be able to hold detailed conversations in Welsh. You will also be able to understand others who use the language. You will be expected to use resources like S4C and language apps to help you do this successfully. As part of the course you will study a Welsh film and discuss this in an exam.

Darllen / Reading

You will be expected to read, both independently and in class. You will read articles, stories, poems and a drama which you will be expected to approach critically.

Ysgrifennu / Writing

You will be expected to show that you are able to write in a number of different ways from essays to translations. You will complete coursework on a subject of personal interest.

Pam Dewis Cymraeg? / Why Choose Cymraeg?

If you are interested in the Welsh language, Wales and its culture, then you will enjoy this course. Bilingualism is a key skill in Wales and Europe in the 21st Century. You may benefit particularly from the course if you intend to work in the fields of education, law, health, tourism, journalism or media.

Welsh is a growing requirement in the world of work. Not only will you gain an A-level qualification but you will stand out from the crowd with level 3 skills in a second language.

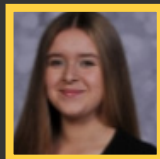
Qualification: **AS / A2 Level**

Exam Board: **WJEC**

Course Director: **Mrs Helen Wareing**

Subject Staff: **Mrs Helen Wareing**
Mr Sam Brown
Miss Anna Jones

Option: **2**



"I enjoyed Cymraeg in lower school and have a great passion for the history and culture. The A Level not only expands our knowledge of the language but also increases our knowledge of the history and culture"

– Caitlyn

Gweithgareddau a Thripiâu All-Gyrsiol /Extra Curricular Activities

As part of the course students will have the opportunity to use and improve their Welsh by attending a 3 day language course in Glan Llyn, visit the capital city of Cardiff for a weekend stay and also watch a Welsh drama performance in Clwyd Theatr Cymru.

Qualification: **AS / A2 Level**

Exam Board: **WJEC**

Course Director: **Ms Ciara Brennan**

Subject Staff: **Mrs Connie Lumsdon-Davies**
Miss Victoria O'Neil

Option: **2**

French

Ffrangeeg

Languages are increasingly essential to career success within Europe and the World. British students are no longer only competing against other British students but against European and international students, many of whom have several languages that they speak with a high degree of fluency.

During A Level French you will learn to communicate at a higher level through developing competence in the four language skills of listening, reading, writing and speaking.

You will also broaden your knowledge of the contemporary society and cultural background of France and other French speaking countries.

If you are interested in languages and communication, and you enjoy learning about other cultures and ways of life, then this course could be suitable for you. Similarly, if you are interested in the business world, in travel or tourism or in journalism and the media, then you are likely to find this course appropriate.

Whether you want to use French for work, for further study, training or for leisure, this course will equip you with the necessary skills and knowledge.



German

Almaeneg

The future hasn't been written yet, but if it had, there can be little doubt that the ability to speak German well would be a significant advantage. Germany is regarded as a true European superpower, and our previous A level candidates all say their language acquisition has served them well as they have gone on to excel in various professions including the following: Hospitality and Tourism, International Travel, International Media, Entertainment, Journalism, Engineering (Airbus and others), Teaching, Armed Forces, Interpreting, Forensic Science, Business, Politics.

Quite apart from the financial and professional reward that German studies can bring, the challenge and enjoyment of engaging with contemporary and cultural content whilst developing confidence and social skills remains an attractive prospect to most. Opting for this course will ensure you reach a high level of fluency and accuracy in the spoken and written language, whilst developing first rate comprehension and problem-solving skills through listening and reading activities.

Students in Year 12 usually have the wonderful opportunity to participate in a trip to Berlin, gain an excellent grounding in the grammar of the language and undertake an in depth study of a popular modern German film. Small group sizes allow us to prepare extremely thoroughly for examinations. At AS level the oral component is worth 12% of the overall A level qualification, while the listening, reading, translation and film essay paper is worth 28%. As we move into the second year, the oral paper is worth a further 18%, the listening, reading and translation paper is worth 30%, and finally the critical response to the set text is worth 12%. The AS level can, of course, be a free-standing qualification, should the candidate so wish.

Although there is no specific course entry requirement, we strongly suggest that candidates should aim to achieve a B grade or above at GCSE.

Qualification: **AS / A2 Level**

Exam Board: **WJEC**

Course Directors: **Mr Paul Edwards**

Subject Staff: **Miss Anna Jones**
Mr Paul Edwards
Mrs Connie Lumsdon-Davies
Miss Victoria O'Neil

Option: **3**



"I have found it very rewarding developing a high level of language skills whilst studying German. The school support network is fantastic." - Abi



Qualification: **AS / A2 Level**

Exam Board: **WJEC**

Course Director: **Ms Ciara Brennan**

Subject Staff: **Ms Ciara Brennan**

Miss Beth Wray

Option: **1**

Spanish Sbaeneg

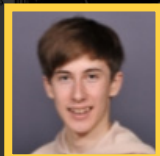
The Languages for The Future report puts Spanish as the number one language required by the U.K. over the next 25 years. Languages are increasingly in demand for career success within Europe and beyond. Spanish is a language of worldwide importance, over 500 million people speak Spanish, and it is spoken in many countries around the globe. Learning Spanish will give you a significant advantage in terms of employment opportunities as well as providing challenge and enjoyment throughout the course.

The Spanish A level course will allow you to achieve a high level of fluency in spoken and written Spanish and you will also develop excellent comprehension and problem-solving skills through listening and reading activities. You will broaden your knowledge of the contemporary society and cultural background of Spain and a wide range of other Spanish-speaking countries. Students become truly global citizens through this course where they develop their intercultural understanding and deepen their knowledge of geo-political issues.

Students in Year 12 will have the opportunity to participate in a study trip to Spain, will gain an excellent grounding in the grammar of the language and will undertake an in depth study of a contemporary Spanish film. Our small group sizes mean that students are thoroughly prepared for examinations. The AS course can be a free-standing qualification or it can lead on to further study in the second year when students continue to A level.

Whether you want to use Spanish for work, further study, training or leisure this course will equip you with the skills and knowledge to communicate at an advanced level.

Although there is no specific course entry requirement, we strongly suggest that candidates should aim to achieve a grade B or above at GCSE.



"Spanish as a subject is more than just acquiring a language. It is a thrilling exploration of diverse cultures and global communities. Each lesson unfolds as an exciting adventure into the language and society of the Spanish speaking world. - Sam"

English Language

Saesneg Iaith

English Language is an exciting and interesting course which gives you insight into how language connects to society. English language is a demanding course, however it gives you the freedom to explore your own topics and be creative in addition to learning evaluative approaches to the language surrounding us.

The course includes the study of how writers and speakers use language to suit different audiences and purposes, in the present day and in the past.

For example: We also look at how language is used electronically, in texting and on websites, and at how people communicate with each other in speech. Through the study of these topics you will develop your analytical skills and your knowledge and understanding of English vocabulary and grammar. English Language also enables students to develop their writing skills. Students learn to write in a variety of different forms. Both the AS and A2 Years involve studying theories about language, such as how children learn to speak and how and why language changes.

English Language is a great all round A level, showing a high level of communication skills, which can lead to a huge variety of degree choices and future careers, such as:

- Media
- Business
- Languages
- Working with Children
- Management
- Journalism
- Language Therapy
- Teaching

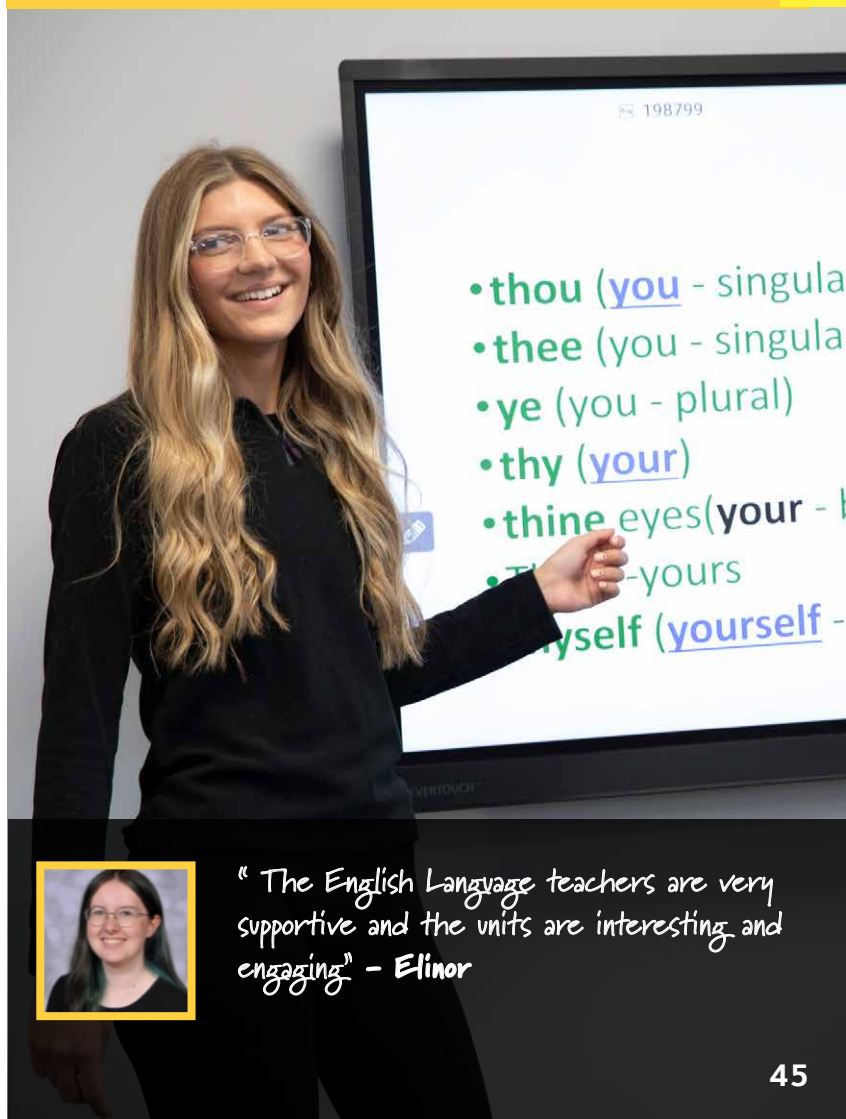
Qualification: **AS / A2 Level**

Exam Board: **WJEC**

Course Director: **Mrs Gemma Blakeley**

Subject Staff: **Mrs Gillian Roberts**
Mrs Ceri McVeigh

Option: **1**



"The English Language teachers are very supportive and the units are interesting and engaging" - Elinor

Qualification: **AS / A2 Level**
Exam Board: **WJEC**

Course Director: **Mrs Gemma Blakeley**
Subject Staff **Mrs Gemma Blakeley**
Year 12 (AS): **Mrs Natalie Spragg**

Subject Staff **Mrs Gemma Blakeley**
Year 13 (A2): **Mrs Laura Davies**

Option: **4**

English Literature

Llenyddiaeth Saesneg

Literature reflects, shapes and documents our world. It is a gateway to history, humanity and artistic endeavour throughout the centuries. If you choose to study English Literature at A level, you choose to study the novels, poetry and drama that have been at the heart of society.

If you are interested in literature and general reading, the analysis of ideas and attitudes, have good general knowledge and a willingness to debate, then English Literature will be the ideal subject for you. It is a popular, successful and enjoyable subject which has specific relevance to careers in teaching:

Because Advanced Level English Literature entails a sophisticated level of intellectual and academic discipline the subject is highly regarded as an entrance qualification for courses in universities and colleges.

It combines well with Law, Arts, Humanities, Social Sciences and Languages.

Possible career pathways include:

Teaching; journalism; law; management; administration and all aspects of the arts including radio, television, theatre and film industries.



"English Literature lessons barely feel like lessons. The casual class discussions about all relevant topics and themes are so exciting to be involved in. I struggled with essay writing at the beginning of Year 12 but my subject teacher offered tips to help me improve which were really useful!" - Maddison

Further Mathematics

Mathemateg Bellach

Students who are particularly enthusiastic about Mathematics may take Further Mathematics as well as Mathematics.

The course is designed for students who have a particular flair for and enjoyment of the subject.

Further Mathematics is an essential choice if you wish to study Mathematics at a top university. Many universities also ask for Further Mathematics A Level for Engineering courses.

There are no controlled assessments. In addition to the 4 units for A Level Mathematics, students will be assessed by examination in 5 more Further Mathematics units, including some of the following topics:

Further Pure Mathematics (complex numbers, hyperbolic trigonometry, matrices, polar co-ordinates, series, group theory);

Statistics (looking at how to analyse and interpret data);

Mechanics (modelling real life physical situations mathematically and finding solutions – much of this module is also taught in AS Physics);

Students intending to study Further Mathematics **MUST** take A level Mathematics also and should have a grade A* at GCSE.

Qualification: **AS / A2 Level**

Exam Board: **WJEC**

Course Director: **Mrs Lindsey Thompson**

Subject Staff: **Mrs Katherine Moss**
Mrs Lindsey Thompson
Mr David Davies

Option: **3**



"Further Maths allows me to work with complex and intricate problems thereby allowing me to improve my problem-solving skills. It is a good combination of the building blocks of Mathematics and extended application of the same." – Ananya

Qualification: **AS / A2 Level**

Exam Board: **WJEC**

Course Director: **Mrs Lindsey Thompson**

Subject Staff: **Mr Eryl Evans, Miss Ceri Roberts
Mrs Katherine Moss, Mr David Davies
Mrs Gail Davies
Mrs Lindsey Thompson
Mrs Alex Peacock**

Option: **2**

Mathematics

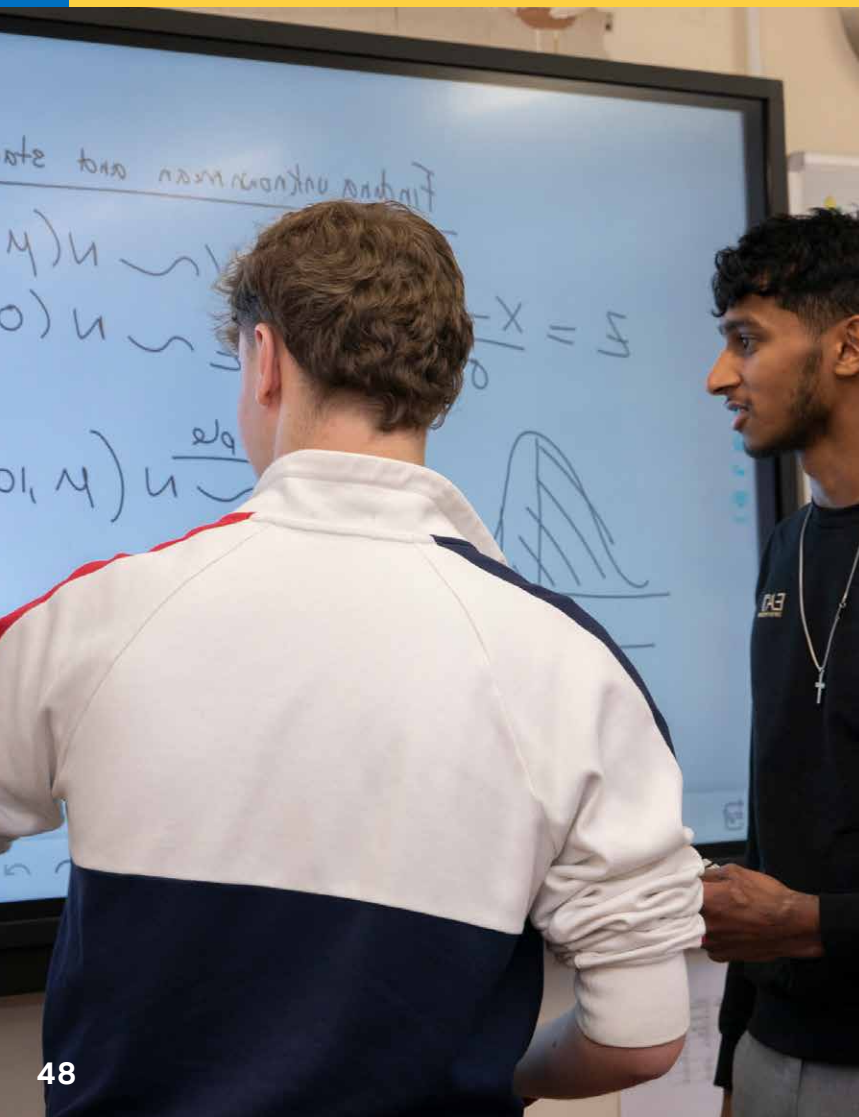
Mathemateg

The A Level Mathematics course begins by building on the topics that you have studied at GCSE. It will further develop your ability to solve problems by applying mathematical arguments and logic and extend your range of mathematical skills to solve more difficult, unstructured problems. Whilst studying mathematics you will be expected to construct solutions through the appropriate use of precise, logical, clear statements. Trigonometry and graph skills will be especially useful to you throughout the AS and A2; increasing responsibility for your own learning and the evaluation of your mathematical development.

There are no controlled assessments. Students will be assessed by examination in 4 compulsory units, 2 at AS Level and 2 at A2 Level. The units will cover both Pure and Applied, (Statistical and Mechanical Mathematics).

Prospective students should have a natural talent for and thoroughly enjoy Mathematics. A Level Mathematics is a very demanding course and those embarking on it should be prepared to invest a **substantial** amount of time and effort outside of lessons. **The minimum grade required to join the course is a grade A at GCSE Mathematics.**

All students joining the course are expected to ensure that they fully understand the contents of the 'Induction Booklet' issued to them. This knowledge is assessed in week three of the course.



Biology

Bywydeg

The course aims to develop a lifelong interest in, and enjoyment of, the study of living organisms, promoting respect for all forms of life. Students will develop both an understanding of biological facts and principles, and an appreciation of their significance in the living world.

The Biology AS course consists of 2 theory units worth 20% each. During the first unit you will be studying basic Biochemistry and Organisation ensuring a smooth transition from GCSE.

The second unit explores biodiversity through physiological adaptation in a number of organisms. During Year 12 and 13 students will build on experimental skills in preparation for practical skills assessment of performance in experiments over a period of time.

The A level course includes the AS units and 2 further theory units. A2 units account for 25% of the qualification and a further 10% from practical exams. Students will study energy release, microbiology and homeostasis in various organisms. They will be able to understand genetics, evolution and environmental issues.

Biology A level is an essential subject to take if you are planning to study:

- **Medicine;**
- **Dentistry;**
- **Veterinary Medicine;**
- **Other biomedical courses such as Physiotherapy**
- **Pharmacology**
- **Nursing**

Qualification: **AS / A2 Level**

Exam Board: **WJEC**

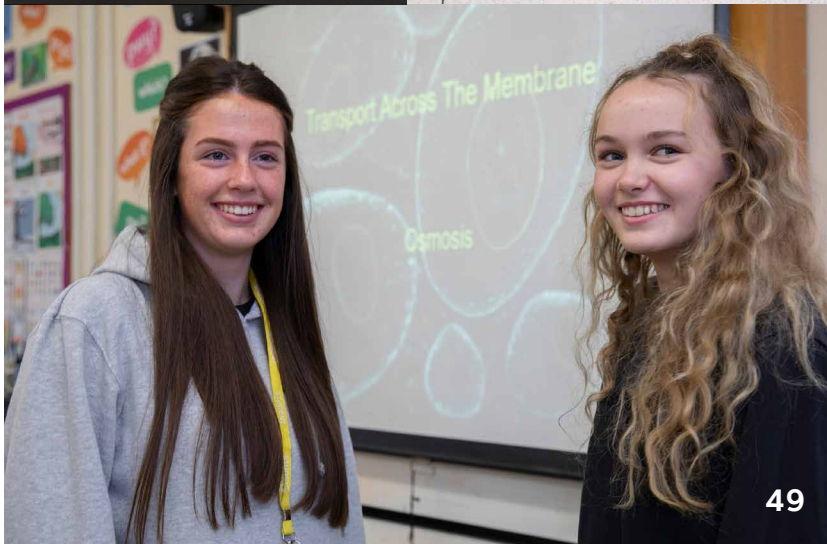
Course Director: **Mrs Debra Clayton**

Subject Staff: **Mrs Carlotta Dunn**
Mr David Swale
Mrs Helena Wade

Option: **4**



"Biology is my favourite subject to study. I love that it allows me to gain an insight in to the workings of the world around us from human beings down to tiny microorganisms." – **Olivia**



Qualification: **AS / A2 Level**

Exam Board: **WJEC**

Course Director: **Dr Amanda Heath**

Subject Staff: **Mrs Kathryn Jackson**

Option: **2**

Chemistry

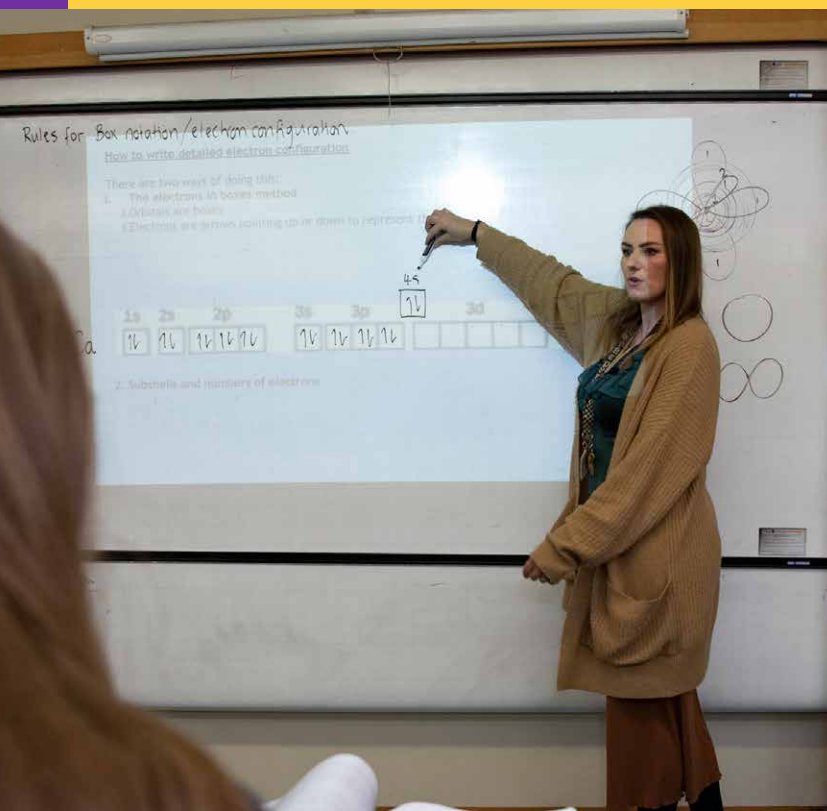
Cemeg

A Level Chemistry is a course designed to cater for candidates who wish to continue with further studies in Chemistry as well as those requiring a chemical background for study in other subject areas.

The course presents some of the knowledge, concepts, techniques and structural relationships of Chemistry under the broad areas of Organic, Physical and Inorganic Chemistry.

Organic Chemistry involves the study of carbon compounds whilst Physical Chemistry concentrates on areas such as Atomic Structure, Bonding and Energetics. Inorganic Chemistry covers a detailed look at the patterns of reactions. Practical work also forms an important part of the course in order to establish basic experimental techniques.

Chemistry is regarded as a discipline that requires logical thinking and a clear and organised mind. It uses and develops a host of skills which employers regard as being invaluable in the workplace, including problem solving, team working, numeracy, communication and practical skills. It is a subject which is at the heart of a variety of science based careers such as medicine, veterinary sciences, dentistry and pharmacy. Alternatively, an A Level in Chemistry can also be used as a stepping stone to a non-scientific career in fields as diverse as business, law, accounting and management.



"Chemistry is a versatile subject, proving to be intriguing, challenging and fun."
- Freddie

Physics

Physics

There are many ways of describing the beauty and elegance of Physics and the incredible value that it has delivered for society, ever-present in the everyday things around us. Physics helps us unlock the mysteries of our universe and the world we live in, and is one of our most powerful enablers of innovation and discovery.

But Physics is also central to everyday life. Physicists are actively collaborating with other researchers and applying their knowledge and technical skills in response to the major challenges of our time, such as sustainable sources of future energy, understanding our changing climate and global food security. Their efforts can be found in everyday technology, such as A.I, smartphones and GP devices, which would not exist today without Physics research.

Qualification: **AS / A2 Level**

Exam Board: **WJEC**

Course Director: **Mr Jeremy Roberts**

Subject Staff: **Mr Jeremy Roberts**
Mr Neil Eve
Mr Andrew Duffy

Option: **2**



Year 12 Provisional Programme Of Study September 2024

Name:

Tutor Group:

You should complete and return this sheet to your
GROUP TUTOR or the school by Friday 1st March 2024
for the attention of Miss Sarah Edwards or by email to
kevin.davies@castellalun.flintshire.sch.uk

- This Option Pattern is based on guidelines on subject combinations from Careers and Higher Education sources.
- All courses are **AS / A2** and Level 3 courses
- Select the course of your choice. As a guide you should select **ONE** option in **AT LEAST THREE** option lines.
- We may well move subjects to minimise clashes

OPTION 1	OPTION 2	OPTION 3	OPTION 4
CRIMINOLOGY ENGLISH LANGUAGE FOOD SCIENCE MATHEMATICS MUSIC PHYSICAL EDUCATION PRODUCT DESIGN SPANISH	ART & DESIGN FRENCH GEOGRAPHY HEALTH & SOCIAL CARE PERFORMING ARTS, ACTING PHYSICS RELIGIOUS STUDIES	BTEC SPORT CHEMISTRY FURTHER MATHEMATICS GERMAN HISTORY PERFORMING ARTS, DANCE & PRODUCTION PSYCHOLOGY	COMPUTER SCIENCE BIOLOGY BTEC BUSINESS ECONOMICS ENGLISH LITERATURE POLITICS WELSH
Enter your SUBJECT CHOICE here	Enter your SUBJECT CHOICE here	Enter your SUBJECT CHOICE here	Enter your SUBJECT CHOICE here
ALL COURSES ARE SUBJECT TO VIABLE NUMBERS OPTING AND STAFFING RESOURCES AVAILABLE			

There will be an additional option line to accommodate extra classes and resolve clashes where possible.

All students will take part in the Welsh Baccalaureate Qualification at Advanced Level.

English and Mathematic resits will be available. There may be some movement of subjects to minimise any clashes

OPTIONS WILL ONLY RUN IF THESE ARE VIABLE NUMBERS.

Application Form

Ffurflen Gais

The online version of this form is
available here:
[Sixth Form Online Application Form](#)

Name:

Tutor Group:

Address:

.....

.....

.....

.....

Please detach this form and return to Castell Alun
High School by Friday 1st March 2024

Date of Birth:

Present School:

Tutor Group:

[if Currently attending Castell Alun High School]

Postcode:

Email:

Tel:

INTENDED COURSE OF STUDY AT CASTELL ALUN HIGH SCHOOL		
SUBJECT	LEVEL - AS, BTEC etc.	REASON FOR CHOICE

Subject Criteria AS Level

Please find below the subject entry requirements as defined by the Learning Areas in school. We believe that these are the minimum grades required to be successful at AS and A2 level. If you achieve grades close to these you may still be able to study a subject following a successful interview with the appropriate teachers.

SUBJECT	ACADEMIC CRITERIA
Art and Design	GCSE Art and Design, Grade B. GCSE English Language Grade C.
Biology	Biology - GCSE Biology, Grade B or above or GCSE Science Double Award, Grade BB, GCSE English Language and Mathematics, Grade B.
Business (BTEC)	GCSE English Language, Grade B or above. GCSE Mathematics, Grade C or above.
Computer Science	Computer Science GCSE Grade B or above or Maths grade B or above and experience in Computer Programming in Python, Visual Basic, Java or C.
Criminology	5 GCSE Grades, Grade C or above
Chemistry	Chemistry - GCSE Chemistry, Grade B or above or GCSE Science Double Award, Grade BB, GCSE English Language and Mathematics, Grade B.
Economics	GCSE Mathematics, Grade B or above. GCSE English Language, Grade C or above. GCSE Business Studies would be advantageous.
English Language	GCSE English Language, Grade B or above.
English Literature	GCSE English Literature, Grade B or above. English Language, Grade B or above. Students have to have an interest in reading.
Food Science & Nutrition (Level 3 Diploma)	GCSE Food Preparation and Nutrition or GCSE Food Technology/Hospitality and Catering, Grade C or above. GCSE English Language, Grade C or above.
French	GCSE French at Grade B or above.
Further Mathematics	GCSE Mathematics, Grade A* or above.
Geography	GCSE Geography: Grade B or above. GCSE Mathematics, Grade B or above.
German	GCSE German at Grade B or above.
Government & Politics	English Language, Grade C or above and preferably another Humanities subject.
Health & Social Care	English Language, Grade C or above and a Grade C or above in Science is desirable for Double Award students. Prior study of Health and Social Care will be useful but not essential.
History	GCSE History, Grade B or above, though in individual cases previous study of subject is not essential.
Mathematics	GCSE Mathematics, Grade A or above.
Music	GCSE Music, Grade B or above.
Performing Arts	GCSE & / or above in English Language and a strong interest in the Performing Arts.
Physical Education	B in the theory paper of GCSE Physical Education. B Grade in a Science GCSE if Physical Education not studied at GCSE. Student needs to participate in at least 1 sport outside school. GCSE English Language, Grade C or above.
Physics	Physics - GCSE Grade B or GCSE Science Double Award, Grade BB.
Product Design	GCSE Product Design, Grade B or above. GCSE English Language, Grade C or above. GCSE Mathematics, Grade C or above.
Psychology	GCSE Biology, Grade C or above and GCSE English Language, Grade C or above.
Religious Studies	Grade C or above at Full Course or Short Course GCSE and GCSE English Language, Grade C or above.
Sport BTEC	GCSE Physical Education, Grade C or above if studied at GCSE. GCSE English Language, Grade C or above. Sport or Physical Education does not have to have been studied previously.
Welsh	GCSE Welsh at Grade B or above.

Application Form

Ffurflen Gais

ADDITIONAL INFORMATION	
<p>Including: <i>Additional learning needs and medical conditions</i></p>	

I HEREBY APPLY FOR A PLACE AT CASTELL ALUN SIXTH FORM. I AGREE TO ABIDE BY THE CODES OF THE SCHOOL.	
Signed: (Student)	Date:
Signed: (Parent)	Date:

FOR SCHOOL USE ONLY	STUDY PROGRAMME APPROVAL	
	Signed:	Date:



☎ 01978 760 238

✉ main@castellalun.flintshire.sch.uk

🌐 www.castellalun.com

🐦 @CastellAlun

Castell Alun High School,
Fagl Lane, Hope,
Flintshire LL12 9PY