



YSGOL UWCHRADD CASTELL ALUN HIGH SCHOOL



PARCH - PENDERFYNOLRWYDD - GONESTRWYDD - RESPECT - DETERMINATION - HONESTY

YN ADEILADU DYFODOL LLWYDDIANNUS BUILDING SUCCESSFUL FUTURES



There will be a new intake Open Evening
on **Thursday 26th September**
and an open morning on **Friday 27th September**

Castell Alun High School, Fagl Lane, Hope, Flintshire LL12 9PY

Tel/Ffon: **01978 760238** Email/Ebost: **main@castellalun.com**

www.castellalun.com X@CastellAlun

Contents

*"The school has looked after all 3 of my children incredibly well.
Thank you for your care and professionalism"
A Parent*

- | | |
|-------------------------------------------------------------------|------------------------------------------------------------------------------------------------|
| 2 Contact Information | 21 Charging and Remissions
Student Development
Additional Needs |
| 4 Welcome | |
| 6 Headteacher's Welcome | 22 Proud to be Welsh |
| 7 Student Support | 23 Curriculum: Lower School
Curriculum: Upper School |
| 8 Expectations | 24 Curriculum: Sixth Form |
| 9 Enjoying School Life | 25 Religious Education
and Assemblies
Equal Opportunities |
| 10 Engaging and
Interactive Learning | 26 Relationships & Sexuality
Education Policy |
| 11 Space for Learning | 27 Careers Education |
| 12 Community Partnerships
/ Rugby Hub | 28 School Day / Term
Dates 2024 - 25 |
| 13 High Aspirations / D of E | 29 School Meals
Out-Of-School Hours Learning |
| 14 Performing Arts / Music | 30 School Uniform |
| 16 Celebrating Success | 32 Exam Results |
| 18 Outside the Taught Day
Our School
Local Authority | 37 In Partnership with Parents
Complaints Procedures
Safeguarding at Castell Alun |
| 19 E-Learning and
Communication | |
| 20 Admission to Castell Alun | 38 Home School Agreement |



Welcome to Castell Alun

Your journey begins here ...

At Castell Alun we believe passionately in providing all of our students with the best possible learning opportunities and experiences. Whether it's lessons, trips, sporting events or school productions, our team works tirelessly to prepare the young people in our community for an exciting future.



Working together with parents and carers, we aim to ensure that every learner is guided, supported and nurtured through one of the most important phases of life's journey. This remains our core purpose.

Everyone remembers their time in secondary school; our aim is to pack that time full of opportunities for self expression and the development of new skills so that our students can thrive in a top quality learning environment and become successful.

We surround every child with exceptional pastoral care, exciting and innovative teaching, and access to sport, dance, music, culture, fun and friendship.

Our students flourish in this context and our examination outcomes reflect our commitment to every single student who joins our special community.



"Teaching staff are dedicated and it is very clear that they want the very best for the children."

Values & Vision / Gwerthoedd a Gweledigaeth



Respect / Parch



We treat everyone equally
We are kind, polite and help others
We behave appropriately

Determination / Penderfynolrwydd



We never give up - we are 'all in'
We remain positive and persevere
We are ready to learn

Honesty / Gonestrwydd



We take responsibility for our actions
We are truthful in what we say and do
We are trustworthy and reliable

Vision / Gweledigaeth

The Castell Alun team will work in partnership with our local community and embrace national priorities to provide all students with excellent **learning** experiences that will develop them into **ambitious** and **capable, enterprising** and **creative, ethical** and **informed, healthy** and **confident** young people, who are fully prepared to reach their potential.

Headteacher's Welcome



Mr C Ellis
Headteacher



"The teaching staff are dedicated and want the very best for the children"
A Parent

Welcome to Castell Alun High School, a happy and successful community where every student is recognised as an individual and where we aim for all to realise their potential.

Learning is at the centre of everything we do both in and out of the classroom and with so many opportunities we are confident your child will flourish here. School life is fundamentally about making progress, moving forward and improving. Everyone has a role to play at Castell Alun in order to realise our aims and indeed translate our vision for high quality learning into reality. Team work plays a significant part in our inclusive ethos, and so too do initiative

and originality. We encourage positive attitudes and a 'can do' culture.

We remain passionately committed to moving with the times in order to prepare all students for the future, but this is grounded constantly in traditional values of respect, determination and honesty. We pride ourselves on our family atmosphere and the fact that students feel safe and cared for. Our dedicated, energetic and talented staff team are committed to high standards and endeavour to bring 21st century learning to life for each individual.

Our forward-thinking curriculum and extensive programme of extra-curricular

activities develop our students' creativity and employability skills, and prepare them for life after school as happy, well balanced and successful global citizens.

We are extremely proud of our past whole school academic successes at both GCSE and A level and also the vast number of fantastic individual student achievements, whether academic, sporting, artistic or personal.

Many of our students gain a place at the top universities around the nation or commence prestigious apprenticeships or employment and go on to enjoy successful careers in every walk of life.

Student Support

Student support is of the utmost importance to us as it forms the foundation for all that will be achieved whilst at Castell Alun.

It is essential that each of our students feels part of the Castell Alun family and we pride ourselves on the quality of care provided by all members of the team, from Group Tutors to Student Development Managers and subject and support staff.

We endeavour to keep in very close contact with all students' families and believe that a child's education is best served by whole-hearted engagement in a true partnership between school and home.



Senior Leadership Team

Our inclusive ethos is one in which the teaching and learning, achievements, attitudes and wellbeing of every young person matters. We have clear policies and systems and whilst good behaviour is the norm, we recognise it is also important to have fun and enjoy the whole school experience.

It really is a privilege to be the Headteacher of this unique school. Together with our dedicated staff team and the unfailing support of

the wider community, parents/carers and Governors we will harness your child's individual strengths to help them to flourish and develop into a creative, confident and caring citizen, who is excited about learning and eager to make a mark on the world. Our students are happy here because they feel inspired, engaged, supported and challenged, but, above all, because they experience success.

Mr C Ellis - Headteacher



Expectations

"Thank you for making me believe that I can achieve great things and for motivating me when I felt that I wasn't good enough"

Student

We work diligently to provide every child with an education which will empower them with the skills, knowledge and understanding they will need to prosper in modern society.

We have very high standards at Castell Alun and, working with parents and carers, we can say with considerable

confidence that all of our young people understand and play their role in abiding by our rules wholeheartedly.

Castell Alun, whether in session in the school building or indeed learning from home, is an inclusive school where every child is expected to develop self-discipline, commitment and personal

responsibility. We have proven systems for making sure that all students can find, explore and develop their talents, in whatever area these may be.

Our team is highly skilled and totally committed to the school's vision for learning.



Enjoying School Life



The most important thing to us is that our students are happy. Everything is built upon this principle. Attendance and punctuality at Castell Alun is very important. There is no doubt about it, the more you put into school life, the more you'll get out of it.

We offer a huge range of learning activities and experiences within and beyond standard taught lessons, and once we spot talents

we are relentless in nurturing and developing them. We are able to boast ex-students running highly successful businesses, managing huge manufacturing plants, performing in the West End, playing sport professionally and several others who now teach in our school.

We listen carefully to our learners and respond to their suggestions. It is, after all, their school. We have a very active School Council, who,

working with the wider student body, raise a tremendous amount of money every year for the school and a broad range of charities.

Many of our students volunteer in the local community. They support, clubs, groups, teams and other organisations. Our students work hard, play hard and don't waste a minute or opportunity. Their outcomes at the end of Year 11 and 13 are, of course, life changing for so many.

Engaging and interactive learning



Teaching and Learning is at the core of what we do. We believe that learning, should be exciting, enjoyable and rewarding and we aim to provide our students with the best possible opportunities to succeed.

As a large school we are able to offer a huge range of subjects and great facilities. We treat all students as individuals and our staff know how to get the best out of each child. We expect our learners to ask questions, challenge knowledge and grow as independent life-long learners.

Our students leave Castell Alun as confident young adults with a wealth of experiences behind them and bright futures ahead. The school's reputation locally and nationally also means that many of the very best teachers choose to work at Castell Alun and our staff are immensely proud to be part of our success.

"Thank you so much for pushing me with my Maths and English and boosting my confidence so that I can achieve my highest grades." Student

Space for learning



Originally built in 1958, our school has grown and evolved to meet the needs of the 21st century learner. We have recently had a new build facility, Y Celtec, which is a state of the art learning area for students.

Our students have access to social areas, high quality dining facilities and the school itself is based in a lovely, quiet village setting. We have a vibrant, well stocked

library, great sports facilities including a new multi purpose floodlit pitch, study areas and well equipped classrooms. Our Sixth Form enjoys its own areas for studying and socialising and our campus is clean, welcoming, bright, homely and well respected by all who use it.

“Our daughter was very anxious and shy when she joined Castell Alun but with the support of all the staff she has flourished and become an outgoing young lady with so much more confidence” A Parent

Community partnerships / Rugby Hub

At Castell Alun we are proud to be part of our local community. Our students are excellent ambassadors for the school in the way they engage in our many varied links and partnerships.

We raise large sums of money for local charities every year and our Duke of Edinburgh Award Scheme and Welsh Baccalaureate involvement provide well used platforms for community service. Our students put on high quality concerts in school and across our local area.

A large number of ex-students live and work locally and their children and even grandchildren attend Castell Alun.

We have a proactive Castell Alun Friends' Association and we are pleased to be able to open our Library to the community with the help of a local volunteer group.



WRU Rugby Hub Officer

We are excited to have appointed a Rugby Hub Officer this year with the support of the Welsh Rugby union and Mold Rugby Club. The Hub Officer's main aim will be to allow Welsh Rugby to thrive, which will be achieved through the following responsibilities:

- Encourage the participation of young people in rugby
- Create inclusive training and playing environments for all
- Use rugby as a medium to deliver physical activity sessions to help create healthy lifestyles
- Promote and deliver continuous development and coaching course to volunteers, young leaders, and coaches

- Provide opportunities to develop and deploy young leaders in the community

Having the Hub Officer positioned in the school allows all students to experience taster sessions in rugby and receive specific coaching during curricular and extra-curricular sessions.

The school is keen to promote the uptake of rugby union in all groups of learners. Overall, the appointment of an officer is an excellent opportunity for both the school, students, and local rugby.



High aspirations

We believe that all our students are capable of impressive things and we always encourage them to aspire to be the best they can be in everything they do.

With careful, considered guidance and personal support our students constantly achieve the examination grades of which they are capable and consequently pursue further study or career paths which are of real interest to them. We work with our students to set ambitious, but achievable, targets in each subject and we monitor and support every learner.

We welcome a great variety of visiting speakers into school each term to deliver presentations and provide workshops about a full range of aspects of life beyond school. These include inputs from professions and worthy charities. Castell Alun also recruits ex-students to come and visit groups of current students in order to discuss particular career and further study paths.

Duke of Edinburgh

This National Award recognises both achievement and endeavour. It can include many varied activities, skills and physical challenges.

The Bronze Award is available to Year 10 students. Volunteering, starting a new skill and doing a physical activity are also part of the award.

The Bronze expedition and training are completed in the spring of Year 10, usually in the Clwydian Hills or Llangollen area.

The Silver Award starts in Year 11, with the final expedition being after the GCSE examinations. The expedition is usually in Snowdonia or the Lake District.

If students are successful, they can opt to do the Gold Award in the 6th Form. This is a two year programme, and involves more time on each section, as well as a residential element.



Performing Arts

At Castell Alun High School, our Performing Arts courses offer a dynamic blend of acting, dance, and production that nurture talent, creativity, and essential life skills. Our state-of-the-art facilities include a dance studio with a sprung floor and full-length mirrors, an air-conditioned activity room, and lighting and sound equipment in our school hall.

Our curriculum is designed to equip students with not only the skills and experience needed for a successful career in the performing arts but also valuable life skills such as confidence, teamwork, and creative problem-solving. Through a variety of shows, plays, and musical productions held throughout the year, students have ample opportunity to showcase their talents, collaborate with peers, and gain real-world performance experience.

Our alumni have gone on to achieve remarkable success in the West End, television, and film, both on and off stage. However, the benefits of our Performing

Arts program extend far beyond the entertainment industry. The skills learned through our courses prepare students for diverse career paths and lifelong personal growth.

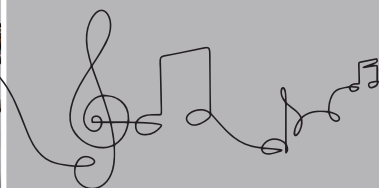
Join us for a fun and enriching journey into the world of performing arts, where your passion can turn into a professional career and your skills can shape a bright future in any field.



Music

The Music department plays an important part in students development and has a positive impact on their wellbeing as well as developing a range of practical and aural skills.

At Castell Alun we also offer a broad range of extra-curricular activities and peripatetic instrumental/vocal lessons delivered in school by Theatr Clwyd Music



"We would like to thank the staff involved in putting together last night's performance. We understand the hours of dedication and commitment that it takes to put on such a show. This demonstrates the students' talent and enthusiasm and shows the passion the teachers have for their subject." **A Grandparent**

Celebrating **success**

At Castell Alun we want all students to succeed. We take every possible opportunity to celebrate the contribution of our students and we pride ourselves in giving students the recognition they deserve for their efforts.

For students who have performed to the best of their ability in a particular subject or won an award outside of school, we use our school website, electronic screens,

social media and other media, school e-mail systems, blogs and letters of recognition to share these successes with others.

For high performers in specific subjects and those students who put exceptional effort into school work we recognise this through certificates, prizes, reward trips / activities and awards during the school year as part of our school Praise and Rewards Scheme.

There are two types of praise points which are awarded electronically.

- ATTAINMENT - awarded when a student completes their very best work, either in the classroom or at home, or for the positive use of Welsh in order to promote bilingualism further.

- EFFORT - awarded when a student's effort exceeds our expectations.

There is a termly assembly for each year group where individual and whole class achievements will be recognised / rewarded.



It's fantastic to see three Castell Alun Year 11 boys representing the region in rugby with the RGC team over the holidays.

We wish them all the best of luck for the rest of the season!



Year 8 student who was awarded the Most Valuable Player award after her performance in Wales All Star National Finals.



Recently, some of our students performed at Drury primary school's Summer Fair



Outside the taught day

Learning happens in many different ways. At Castell Alun, students are given the best possible opportunities to enjoy learning, both in and out of the classroom, whether on the school premises or not. We offer a huge range of extra curricular activities from music, dance and drama to sport, debating and engineering.

Our Study Club facility is normally available after school every Tuesday and Thursday.

We pride ourselves on planning a great many stimulating trips for students, both locally and further afield, with at least three visits going abroad during each standard school year as well as a wealth of opportunities to explore the local area.



Our School

Castell Alun is an English medium co-educational school catering for around 1350 students.

Originally opened in 1958, there have been three stages in the school's development: firstly as an 11 - 16 Secondary School, then a short spell as a Junior Comprehensive and, finally, its present status as an all through 11 - 18 Comprehensive School. The school serves a number of communities from Dobshell near Hawarden in the north, to Llay in the south and from Kinnerton near Chester in the east, to Treuddyn in the west. We are located in the pleasant village of Hope, three miles from the border with England and roughly equidistant between Chester and Wrexham. This provides for a rich and balanced cultural mix of English and Welsh which is reflected in the ethos of the school.



Local Authority

Telephone: **01352 704068**

The Education Department Lifelong Learning Directorate

Flintshire County Council, County Hall, Mold, Flintshire CH7 6ND

E-Learning and Communication

Castell Alun's learning environment includes a well-stocked Library and Study Areas, as well as several ICT suites. The pleasant working atmosphere in the Library and Study Areas, and the availability of help and advice, are much appreciated by staff and students.

The ICT suites consist of networked computers equipped with up-to-date software and the school also has specialist computer facilities and software in Music and Technology. Students make full use of ICT resources in a variety of subjects and ICT and digital competency is regarded as an integral part of students' development.

Classrooms throughout Castell Alun are equipped with a digital multimedia projector or smartscreen TVs, and our Virtual Learning Environment allows students access remotely to the latest web content, animations and presentations. Indeed our use of Google Classroom has increased greatly and this VLE is now at the very core of both classwork and homework learning experiences. Our wi-fi network enhances the teaching and learning experience for all, engaging students in new and innovative ways using mobile devices across the school.



Chair of Governors: [Mrs Helen Williams](#)

Chief Officer Education & Youth (Flintshire): [Mrs Claire Homard](#)



@CastellAlun

www.castellalun.com



Admission to Castell Alun



The school takes 211 students into Year 7 each year. We are grateful that the school's reputation means that we are continuously over-subscribed.

We are required to operate within the 'Admission Arrangements' as laid down by the Local Authority, copies of which are available from:

**The Education Department,
Lifelong Learning Directorate**
Flintshire County Council
County Hall
Mold
Flintshire
CH7 6ND

Tel: **01352 704068**

Parents or carers of students in their final year of primary school will complete an online 'Parental Preference Form' via Flintshire County Council. Parents should, if they wish, indicate Castell Alun as their first choice of secondary school.

Responsibility for school transport rests with the Local Authority. Transport will be provided for students where Castell Alun is the nearest school to the home address, but only if the home address is more than 3 miles from the school (measured along the shortest possible route). Occasionally, if a route is deemed to be 'hazardous' then transport may be provided from addresses nearer to the school.

We liaise closely with our local primary schools. Students due to join Castell Alun in September are usually invited to visit the school for our Induction Day during the Summer Term. Further information is provided at an evening, held in July, for those parents whose children will be starting at Castell Alun in September. Parents are welcome to visit the school at other times but are asked to make an appointment. Telephone: **01978 760238**.



Charging and Remissions

The school follows the Welsh Government's and local authorities guidance for schools on activities within its Charging and Remissions Act 1996 policy.

Charges made will be those permissible under the Education Act 1996 and associated Statutory Instruments.

Student Development

On arrival at the school, each student joins a Tutor Group under the specific care of a Group Tutor. There is no order of ranking within the year as each group is seen as being equal.

The allocation to groups takes place after liaison with the local primary schools. Castell Alun is organised for pastoral purposes into Year Groups. Years 7, 8 and 9 make up the Lower School. Years 10 and 11 make up the Upper School. Years 12 and 13 make up the Senior School. Each Year Group is comprised of a number of Tutor Groups, each with its own Group Tutor and led by a Student Development Manager.



Additional Learning Needs

The school aims to provide access to the whole curriculum for students with additional learning needs through a number of support strategies.

The school welcomes students with additional learning needs, with or without Individual Development Plans, in the same way as other children. Students needing support in literacy and numeracy are monitored and given access to small group teaching during English and Mathematics lessons. Additional help with reading and/or spelling skills is provided in the Boost area.

We also have a 'Nurture Group' in Year 7. This offers small groups of students a more intimate and supportive curriculum whilst they adjust to the demands of secondary school education. The member of staff responsible for promoting the educational achievement of Looked after Children is Mr Craig Stewart.

We have embraced the reform of Additional Learning Needs in Wales (which commenced in September 2021). Our Additional Learning Needs Coordinator (ALNCo), Dr Nicola Davies works tirelessly to ensure that staff are equipped to help students with a great variety of learning needs.

"The Boost staff are very kind and nice. Thanks to Boost I have learnt a lot." A student

"Boost helps me with everything." A Student

"The Boost staff really help me with my anxiety" A Student.

Proud to be **Welsh**

Whilst Castell Alun is an English Medium School, the Welsh culture is emphasised throughout the school in many areas.

The Welsh Department plays an important role in ensuring the delivery of the language through its teaching provision but also promotes the culture of Wales in a number of extra-curricular activities. Welsh is used in main school assemblies and the Curriculum Cymreig is an integral part of subject specific schemes of work throughout the school.

As a school, we have declared in our Development Plan that we will embrace the national 'Siarter Iaith' initiative. It is an exciting time as we embark on our Cymraeg Campus journey, which is the awards framework for bilingualism in English medium schools

We have a Welsh Student Council and many of our students embrace the language and the opportunities being bilingual can offer.

The Clwb Cymraeg is well attended and many of our students are Urdd members and compete in the Eisteddfod.



Curriculum

Lower School

In Year 7, every child will follow a timetable comprising:

English

Expressive Arts

(Games, Gymnastics / Dance, Music)

Humanities

(Geography, History, Religious Education)

Languages

(French and Welsh, in Year 7, French, German and Welsh in Year 8 and a choice of French / German with Welsh in Year 9.)

Mathematics

Science

Design Technology

Art and Design

Computing & ICT

ALL subjects are included within the framework of the National Curriculum. In addition students will experience: Personal, Social, Health and Economic Education (PHSE) Relationships and Sexuality Education (RSE), an Assembly (Year or Group) and Whole School Assembly.

Upper School

The aim of the Upper School is to provide each student with a balanced curriculum which caters for individual interests and aptitudes, without closing too many avenues of study.

Towards the end of Year 9 students are asked to choose from a number of options and this process is carried out with full consultation between parents, students and staff. Details of option programmes are provided in a separate booklet distributed during the Spring Term to Year 9. A Parents' Evening for Year 9 students is held prior to the final option choice. Students also study towards the Welsh Baccalaureate qualification at National / Foundation Level in Year 10 and Year 11. Elements include community participation, enterprise, citizenship and an individual research project.



"I am very grateful for the support and advice given to myself and my daughter from the teachers at such an important time in her education."

Parent

Curriculum

“Thank you for pushing me to do so well. You have had a huge impact on me and my school life as well as many others” *A Student*

Sixth Form

The Sixth Form at Castell Alun offers wide-ranging educational opportunities. Students are expected to adopt a mature pattern of behaviour and attitude, to transmit this by example to younger students, and to contribute to the school and its values.

Each student in the Sixth Form is guided, supported and monitored from the outset. At Castell Alun we are very proud of the guidance programme we have developed. This has enabled a great many students over the years to obtain a place in Higher/Further Education, or a prestigious Higher Apprenticeship. This programme is complemented by liaison with employers and universities who recognise that students from the Sixth Form at Castell Alun achieve academically, and have developed qualities which enhance their chosen career or Higher Education course.

Castell Alun has had consistently strong exam results for a number of years that exceed both county and national averages. Subject choices include a range of level 3 courses at AS/A Level and BTEC. Information about courses and option choices is conveyed to parents during the Spring Term in Year 11. As an extension to subjects offered in the Sixth Form, all students are able to undertake the Welsh Baccalaureate at Advanced Level, and this qualification has assisted countless students in being accepted at their first choice university over recent years.



“My child has received excellent support at Castell Alun, both academically and personally. We really like the nurturing ethos and support that the Sixth Form offers.”

Religion, Values and Ethics

Students are expected to attend regular whole school and year assemblies.

Students follow a statutory course of religious values and ethics (which is also offered as an optional examination subject in the Upper School) including time for reflection and personal wellbeing, which is broadly Christian in nature.

Equal Opportunities

The school is committed to the principle of equal opportunity for all. Initiatives designed to further this principle are actively promoted and supported. These aims are further realised through our School Council Equality and Diversity Group.

We seek to encourage the development of attitudes which endorse the equal worth of all individuals and to ensure that all aspects of the curriculum and administration subscribe to the principle of equal opportunities.

Staff aim to devise teaching, learning and class management strategies that emphasise the principle of equal worth and in doing this we attempt to lay the foundations of a just and equitable society.



"All the year 7 teachers were so warm and welcoming at parents' evening. I can see why my son has really settled in well. Thank you all for doing a great job."

A Parent

Relationships and Sexuality Education

In accordance with the requirements of the Education Act, the governors of the school reviewed and approved the Relationships & Sexuality Education Programme offered to our students. This policy has been updated in line with statutory requirements and approved by the Governing Body.

The Policy states:

‘All students, whatever their background, should be encouraged to appreciate the value of stable family life, marriage/partnerships and the responsibilities of parenthood. They should be helped to consider the importance of self restraint, dignity, respect for themselves and others and acceptance of responsibility, sensitive to the needs and views of others and of loyalty and commitment’.

The Governors judged that the Relationships & Sexuality Education Programme is being delivered with ‘due regard to moral consideration of the value of family life’ (as delineated in the Act).

The Governors also resolved that Relationships & Sexuality Education will be delivered within the AOLE of health and wellbeing through PSHE.

Resources for the unit are selected through Jigsaw which is an award winning mindful approach to PSHE and each unit is developed with regard to the age of the student.

Relationships & Sexuality Education forms a compulsory part of the curriculum for all students.



Careers Education

Our Careers and Work Related Experiences (CWRE) are designed to support Castell Alun High School's mission to develop successful futures.

To ensure learners can make progress, we embed CWRE throughout the school curriculum and as per the guidance for the curriculum for Wales (CFW).

Working with the Careers Service, we aim to help students embark on their career journey equipped with knowledge and skills to ensure that informed decisions can be made.



Castell Alun High School's Career and Work-Related Experiences Aims:

KS3

To explore different careers and industries and develop aspirations and employability skills.

KS4

To embed employability skills and investigate post-16 options.

KS5

To be equipped with knowledge and employability skills suitable for post-18 pathways.

ALN

To support your career journey, by providing one to one career guidance, embedded as part of your usual learning plan.

For further information on careers, please visit our career website:

<https://sites.google.com/castellalunmail.com/cwre/home>



Standard School Day Term Dates 2024 -25

8.45 am	-	Warning bell
8.50 am	9.15 am	REGISTRATION / P.S.E.
9.15 am	10.15 am	Period 1
10.15 am	10.30 am	BREAK
10.30 am	11.30 am	Period 2
11.30 am	12.30 pm	Period 3
12.30 pm	1.15 pm	LUNCH TIME
1.15 pm	2.15 pm	Period 4
2.15 pm	3.15 pm	Period 5
3.15 pm	-	End of School Day



AUTUMN TERM - TYMOR YR HYDREF		
Monday 2nd	September	School closed - Staff Training Day
Tuesday 3rd	September	School closed - Staff Training Day
Wednesday 4th	September	School reopens to all students
Friday 25th	October	School closes - Half Term
Monday 4th	November	School Reopens
Friday 20th	December	School closed - Christmas Holiday
SPRING TERM - TYMOR Y GWANWYN		
Monday 6th	January	School closed to students CFW Day
Tuesday 7th	January	School reopens to all students
Thursday 20th	February	School closes - Half Term
Friday 21st	February	School closed - Staff Training Day
Monday 3rd	March	School Reopens
Friday 11th	April	School closes - Easter Holiday
SUMMER TERM - TYMOR YR HAF		
Monday 28th	April	School reopens to students
Monday 5th	May	School closed - May Day
Friday 23rd	May	School closes - Half Term
Monday 2nd	June	School reopens
Wednesday 17th	July	School closes - Summer holiday

School Meals (Facilities Services: Catering Division)

A range of food is available each day from the 'Food Court', which provides a choice of full meals and a range of substantial 'snack' meals.

All items are individually priced, but each day a set meal for around £3.05 is available from the main dining room. Students are welcome to bring in a packed lunch. Drinks are available from vending machines

Out-of-School-Hours Learning

Students are encouraged to play a full part in the life of the school and a wide range of activities are offered at lunchtime and after school.

Health & Wellbeing offers a variety of sports clubs during lunchtime and after school which includes interform activities. There are also opportunities for students to represent the school in inter school fixtures across many sports.

Expressive arts offer a wide range of lunchtime and afterschool activities including art, coding, drama, performing arts, musical ensembles and choirs.

Students have the opportunity to get involved with key stage 3 productions either on stage or backstage such as our recent very successful production of Matilda.

A variety of activities will run on a range of days and finish at 4.30.

in the school, and drinking water is available from fountains situated around the school. Eligibility for free school meals can be discussed with the School Office. Food allergies can be discussed with the school nurse and Catering Manager (Mrs D Bibby). We operate a cashless catering system and money can be paid onto personal accounts both via machines in school and using the School Gateway app online.



School Uniform

The School expects a high standard of regulation uniform dress from each student and we are sure that this policy will be supported by you as parents and carers. Uniform requirements are set out below.

Make up - Natural discreet make-up is only allowed in Years 9, 10 and 11. Nail varnish, false eyelashes and false or acrylic nails are not permitted in school.

Jewellery - This can be hazardous for certain activities during the school day. Only one ear stud may be worn in each ear. Two plain rings may be worn, but large sovereign type rings are unsuitable. A watch is permitted but no other bracelets, bangles, necklaces or arm bands. Body and facial jewellery is not permitted i.e. nose, eyebrow, tongue studs, spacers etc.

Hair - Long hair must be kept under control, for safety reasons. Extreme hairstyles and colours are not acceptable, this includes shaven heads and grade zero. Natural hair colour is acceptable.

*only available from the school supplier

We have tried to make our uniform requirements and dress code clear to avoid misunderstandings. If you are unsure about any of the above please contact the school.

Basic Uniform

Outdoor coat

Denims, leather jackets and branded hoodie style tops are not acceptable

V neck sweater

Black with embroidered school badge *

Shirt

White, conventional style buttoned up to collar

Trousers

Plain black tailored style.
Jeans/canvas or skinny/tapered trousers are not acceptable.

Skirt

Tailored, pleated plain black school skirt, appropriate length.
Tube, skater or pencil styles are not acceptable.

School tie

Gold with narrow black strip,
Lower school. Black with narrow gold stripe,
Upper school - Ties can be purchased from school

Socks/ Tights

With trousers and tailored shorts - plain black socks.
With skirts - plain black, opaque black tights or black ankle socks

Footwear

Plain black footwear, that can be polished and are unbranded
Trainers, shoes with a sports branded logo, black pumps and boots are not permitted



SCHOOL SUPPLIER

Items of the Physical Education uniform together with the school jumper and optional rain jacket are available from:

F. R. Monkhouse, New Street, Mold. Telephone: **01352 756636**

Most chain stores stock the other main items.

Physical Education Girls and Boys Kit

Rugby & Soccer Shirt

Reversible shirt – black and yellow *

T-Shirt

Black and yellow with Castell Alun logo *
or plain black round neck, straight or fitted

Socks

Black football style

Boots

Studded Soccer or rugby for winter games

Training Shoes

Sports trainers only - canvas shoes are not allowed

Shorts or Fitness leggings

Shorts, black football style, leggings, black
dri-fit material. No stripes or branding on either

Towel

For games lessons

Shinpads & Gumshields

Safety for football, rugby and hockey lessons

Optional Extra Kit

Sweatshirt

Black with Castell Alun logo* or
plain black, round neck, unbranded

Skort

Black with yellow stripes with
Castell Alun logo * or plain black
unbranded

Base Layer Top

Plain black (for winter games
lessons)

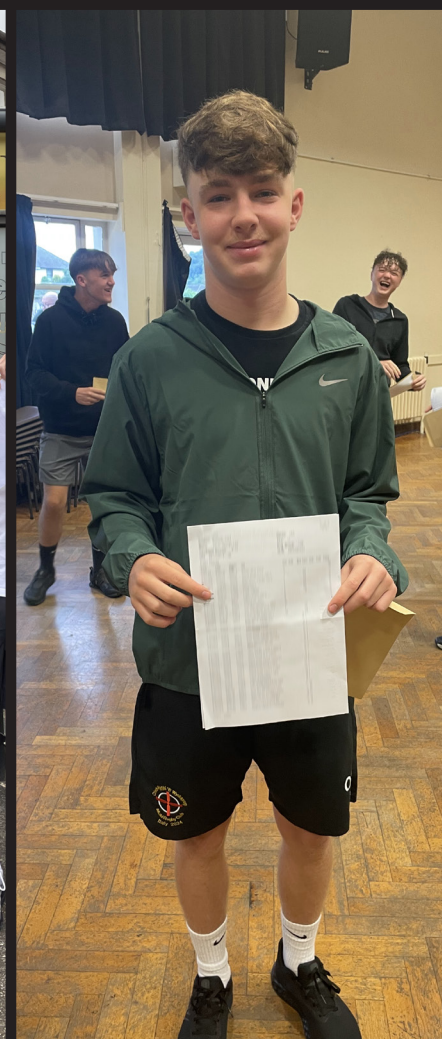
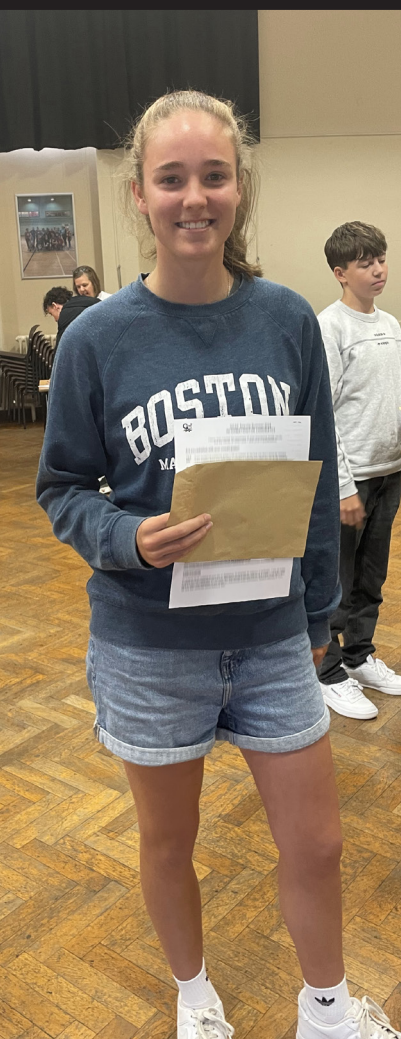
Tracksuit Bottoms

Plain black (no stripes or sports
logos) or with Castell Alun Logo*

*only available from the school supplier (previous page)



Public Examination Results 2024



"The school has comprehensive systems to monitor pupils' academic progress and their wellbeing. It uses this system extremely well to celebrate achievement as well as to identify any underperformance or barriers to learning. This enables the school to intervene promptly to meet the needs of individual pupils."

GCSE Results 2024

GCSE Subject	Entries	A*	A	B	C	D	E	F	G	U	%A*-A	%A*-C	%A*-G
ART & DESIGN	38	4	12	17	5	0	0	0	0	0	42.1	100	100
BIOLOGY	54	13	28	10	3	0	0	0	0	0	75.9	100	100
CHEMISTRY	54	19	24	8	3	0	0	0	0	0	79.6	100	100
COMPUTER STUDIES/COMPUTING	22	2	3	4	3	2	3	3	2	0	22.3	54.5	100
DESIGN & TECHNOLOGY	21	0	2	2	6	4	5	0	2	0	9.5	47.6	100
DIGITAL TECHNOLOGY	7	1	0	2	1	1	1	0	1	0	14.3	57.1	100
ENGLISH LANGUAGE	203	8	39	45	47	47	13	2	0	3	23.1	78.8	99
ENGLISH LITERATURE	168	8	39	56	57	7	1	0	0	0	28	95.2	100
FRENCH	18	3	5	4	3	2	0	1	0	0	44.4	83.3	100
GEOGRAPHY	47	5	7	15	6	7	3	2	2	0	25.5	70.2	100
GERMAN	5	0	2	1	1	1	0	0	0	0	40	80	100
HEALTH & SOCIAL CARE	32	5	6	5	7	4	2	3	0	0	34.4	71.9	100
HISTORY	76	11	30	18	4	8	4	0	1	0	53.9	82.9	100
FOOD & NUTRITION	23	0	3	4	7	8	1	0	0	0	13	60.9	100
MATHEMATICS	203	22	26	50	53	23	14	3	10	2	23.6	79.3	99
MATHEMATICS NUMERACY	198	16	29	46	51	18	17	8	2	9	17.7	71.7	94.4
MUSIC	23	0	6	6	5	1	4	1	0	0	26.1	73.9	100
PHYSICS	54	10	24	14	6	0	0	0	0	0	62.9	100	100
RELIGIOUS STUDIES	57	15	21	6	8	5	0	0	0	2	63.1	87.7	96.5
SPANISH	15	1	5	2	1	5	0	0	1	0	40	60	100
SPORTS / PE STUDIES	41	3	4	15	8	8	1	2	0	0	17.1	73.2	100
WELSH	187	14	52	37	29	23	16	12	4	0	35.3	70.6	100

		A*A*	A*A	AA	AB	BB	BC	CC	CD	DD	DE	EE	EF	FF	FG	GG	U	%A*-A	%A*-C	%A*-G
Science (Core) GCSE / DA	147	2	4	8	5	14	25	22	13	10	13	2	6	8	7	2	6	11.5	60.1	97.9

Public Examination Results 2024



"Sixth Form pupils demonstrate consistently high standards in their work. They show strong independence and maturity in their learning and have well developed subject knowledge."

ESTYN

A Level Results 2024

A Level Subjects		A*	A	B	C	D	E	U
Art & Design	12	0	3	3	5	1	0	0
Biology	21	0	6	5	8	1	1	0
Chemistry	8	0	4	0	3	1	0	0
Computer Studies/Computing	5	1	1	1	1	1	0	0
CRIMINOLOGY Social Science L3	48	0	6	12	21	5	3	1
D&T Product Design	5	0	1	2	1	0	1	0
Economics	14	0	2	1	5	6	0	0
English Language	14	0	3	10	1	0	0	0
English Literature	8	1	1	3	3	0	0	0
Geography	11	0	0	3	6	0	2	0
Health & Social Care	9	0	1	3	4	1	0	0
History	25	0	5	11	9	0	0	0
Mathematics	24	0	5	8	6	3	2	0
Mathematics Further	7	1	1	2	1	1	1	0
Music	4	0	1	0	3	0	0	0
Physics	17	1	3	5	5	3	0	0
Politics	7	0	3	3	1	0	0	0
Psychology	39	3	8	12	9	7	0	0
Religious Studies	8	1	3	2	2	0	0	0
Spanish	4	0	0	1	1	2	0	0
Sport/PE Studies	8	0	3	5	0	0	0	0
Overall totals /exc WBQ)	298	8	60	92	95	32	10	1
Baccalaureate WBQ/A	68	4	14	23	23	3	1	0
Overall totals (inc WBQ)	366	12	74	115	118	35	11	1

%A* - A	%A* - C	%A* - E
25	91.7	100
28.6	90.5	100
50	87.5	100
40	80	100
12.5	81.25	97.9
20	80	100
14.3	57.1	100
21.4	100	100
25	100	100
0	81.8	100
11.1	88.9	100
20	100	100
20.8	79.2	100
28.6	71.4	100
25	100	100
23.5	82.3	100
42.8	100	100
28.2	82	100
50	100	100
0	50	100
25	100	100

Vocational Subjects	Numbers achieving											
	Entries	D*	D	M	P	D1 (D*D*)	D2 (D*D)	DD	DM	MM	MP	PP
Acting BTEC/EC3	1	0	1	0	0	0	0	0	0	0	0	0
Business and Finance BTEC/EC3	33	15	10	8	0	0	0	0	0	0	0	0
Costume Design BTEC BTEC/SD3	3	1	0	0	2	0	0	0	0	0	0	0
Dance BTEC EC3	2	0	0	2	0	0	0	0	0	0	0	0
Food Science L3	2	0	0	1	1	0	0	0	0	0	0	0
Musical Theatre BTEC/EC3	1	0	1	0	0	0	0	0	0	0	0	0
Performing Arts BTEC/DI3	3	0	0	0	0	0	0	2	0	1	0	0
Performing Arts BTEC/FD3	6	0	1	4	1	0	0	0	0	0	0	0
Production Arts (Qcf) BTEC DI3	2	0	0	0	0	2	0	0	0	0	0	0
Sports Coaching BTEC/EC3	2	0	0	2	0	0	0	0	0	0	0	0
Stage Management BTEC/SD3	1	1	0	0	0	0	0	0	0	0	0	0
Theatre Technology BTEC/CE3	1	0	0	0	1	0	0	0	0	0	0	0

Percentage	
Distinction or above	Pass or above
100	100
75.7	100
33.3	100
0	100
0	100
100	100
66.7	100
16.7	100
100	100
0	100
100	100
0	100

Key Stage 4 Vocational Qualifications 2024

Vocational Subjects	Number							Percentage	
	Entries	D*	D	M	P	1	U	% Dist +	% Pass +
Acting Skills BTEC Level 1/2		0	0	2	5	0	0	0	0
Dance BTEC Level 1/2		2	2	3	5	1	0	0	0
Business BTEC Level 1/2		12	19	16	7	4	0	0	0
Production Process BTEC Level		4	0	2	3	1	0	0	0
Sports Studies BTEC Level 1/2		1	0	1	5	1	0	0	0
Agored NVQ Level 1		0	0	0	0	0	0	0	2
Agored NVQ Level 2		0	0	0	0	0	0	0	18
Hair & Beauty VTCT Level 2		0	0	0	0	0	1	6	4
Construction C&G Level 1		0	0	0	0	0	0	0	5



In Partnership with Parents

We believe that educating children is a process that is best done in partnership with parents.

For this reason we like to ensure that information is passed on from school as appropriate through prospectuses, bulletins, blogs, information letters, social media, school e-mails and other documents.

Other form of parental communication include:

SIMS App - This streamlines daily communication by providing updates on student attendance, behaviour and important announcements for the entire school or specific year groups.

Google Classroom Guardian Email Summary - This feature keeps parents informed about classroom activities, homework assignments, deadlines and weekly reminders, ensuring regular communication between teachers and parents.

Student Organiser - The Student Organiser helps students manage their time, tasks, and responsibilities efficiently. It also enable seamless communication between teachers, tutors and parents through brief handwritten messages.

We actively promote the positive image of our school on social, other forms of media and on the school's website we seek feedback from parents and other members of the wider community at regular intervals. **Parents who are unhappy with their children appearing in the media should inform the school.**



Complaints Procedures

The Governing Body's Complaints Policy reflects the complaints procedure outlined in The Welsh Government circular 2011/12 - Complaints Procedures for School Governing Bodies in Wales.

Any concerns expressed by parents and others about the school curriculum and other school issues will continue to be considered and, so far as possible, dealt with through informal discussion with

Student Development Managers, Learning Managers or Senior Staff in the first instance.

Copies of The School's Complaints Policy are made available upon request, and can be accessed via the school website.

Safeguarding at Castell Alun

At Castell Alun, we aim to create and maintain a healthy and safe environment for all members of our school community.

We have a considerable number of policies in place to support this, with due regard given to current national legislation.

Copies of these policies are available from the school by request with many being available from the school website.

Home School Agreement

Our Aim

At Castell Alun High School, our Home School Agreement is rooted in our core values and vision: Respect, Determination, Honesty, and Developing Successful Futures. This agreement aims to create a positive and supportive learning environment that fosters the growth and well-being of all students. It outlines the commitments of the school, parents and students to achieve this shared vision.

School's Commitment

1. Creating a Positive Learning Environment:

- Promote respect, determination, and honesty within the school community.
- Encourage students to develop successful futures through supportive and enriching educational experiences.
- Ensure all students feel safe, valued and motivated to learn.

2. Reward System:

- Recognise and reward positive behaviour and academic achievements.
- Provide various incentives and recognitions, such as certificates, commendations, and awards.

3. Behaviour and Uniform Expectations:

- Establish clear guidelines for acceptable behaviour and uniform standards both in and out of the classroom.
- Encourage students to make positive choices and take responsibility for their actions, including wearing the correct school uniform.

- Foster mutual respect among students, staff, and the wider school community.

4. Consequences for Misconduct:

- Implement a fair and consistent approach to dealing with behavioural and uniform policy issues.
- Ensure that consequences for misconduct are proportionate and aimed at promoting better choices in the future.
- Involve parents and guardians in addressing and resolving behavioural and uniform concerns.

5. Support Mechanisms:

- Provide access to pastoral care and counselling services for students in need.
- Offer mentoring and guidance to help students overcome challenges and achieve their full potential.
- Work closely with parents, guardians, and external agencies to support students' wellbeing and development.

Parents'/Guardians' Commitment

1. Partnership in Education:

- Support the school's values and vision by encouraging respect, determination, and honesty at home.
- Engage in open and constructive communication with the school regarding their child's progress and wellbeing.
- Attend meetings and events to stay informed and involved in their child's education.

“We are positive that our son has turned a corner and we would like to thank all of his teachers and give them credit for helping him achieve his potential.”

A Parent

2. Encouraging Positive Behaviour and Uniform Compliance:

- Reinforce the importance of good behaviour, respectful conduct, and adherence to the school's uniform policy.
- Support the school's reward system by acknowledging and celebrating your child's achievements.
- Work with the school to address any behavioural and uniform policy issues promptly and effectively.
- To download and use the SIMS Parent app to support your child's attendance and progress

3. Supporting Learning:

- Ensure that your child attends school regularly and punctually, dressed in the correct school uniform.
- Encourage homework completion at home and sign the KS3 Lower School planner every week.
- Encourage your child to participate in extracurricular activities and school events.

2. Positive Behaviour and Uniform Compliance:

- Follow the school's behaviour guidelines and uniform policy expectations.
- Take responsibility for your actions and make positive choices.
- Respect the rights of others to learn and feel safe.

3. Engagement and Effort:

- Attend school regularly and on time, dressed in the correct school uniform.
- Complete all classwork and homework to the best of their ability.
- Participate appropriately in lessons and school activities.

Uniform information - See pages 30 and 31

Students' Commitment

1. Upholding School Values:

- Show respect to all members of the school community.
- Demonstrate determination and honesty in all aspects of school life.
- Strive to develop successful futures by making the most of educational opportunities.



PARCH - PENDERFYNOLRWYDD - GONESTRWYDD - RESPECT - DETERMINATION - HONESTY



Castell Alun High School, Fagl Lane, Hope, Flintshire LL12 9PY

Tel/Ffon: **01978 760238** www.castellalun.com

Email/Ebost: main@castellalun.com

 @CastellAlun