



Welcome to our Year 10 Information Evening

Croeso i'n Noson
Wybodaeth Blwyddyn 10



Respect, Determination, Honesty
Parch, Penderfynolrwydd, Gonestrwydd



OUTLINE

- Information about the core subjects
- Access Arrangements
- Communication
- Creating good study habits



Respect, Determination, Honesty
Parch, Penderfynolrwydd, Gonestrwydd



Core subjects

Key Stage 4 Curriculum

- Cymraeg- Welsh
- GCSE Skills
- English Language and English Literature
- GCSE Mathematics & Numeracy
- Science
- PE



Respect, Determination, Honesty
Parch, Penderfynolrwydd, Gonestrwydd



Cymraeg



Respect, Determination, Honesty
Parch, Penderfynolrwydd, Gonestrwydd



TGAU – Cymraeg Ail Iaith

GCSE – Welsh Second Language

Mrs Helen Wareing

Bilingualism & Welsh Coordinator



Respect, Determination, Honesty
Parch, Penderfynolrwydd, Gonestrwydd



TGAU – Cymraeg ail iaith

- 2 Lessons per week in Year 10 and 11
- All students will be sitting the Welsh GCSE
- Full Course Qualification
- There are 4 units

Pam? *Why?*

- Government Target – 1 million Welsh Speakers by 2050
- Welsh is a skill being increasingly demanded by employers across Wales
- Being bilingual increases employment opportunities



Respect, Determination, Honesty
Parch, Penderfynolrwydd, Gonestrwydd



Unit 1 – Year 10 Speaking Exam

- March 2025
- 25% of the overall GCSE.
- Students are required to work in a pair or a group of three discussing a video clip.
- Based on a topic from the GCSE course.
- Revision materials available on Google Classroom.

Unit 2 – Year 11 Speaking Exam

- April / April 2026
- 25% of the overall GCSE.
- Students are required to work in a pair or a group of three discussing an information sheet.
- Based on a topic from the GCSE course.
- Revision materials available on Google Classroom.

Unit 3 & 4 – Year 11 Exams

- In summer 2025, Year 11 students will sit the unit 3 & 4 reading and writing examinations.
- Unit 3 is worth 25% and Unit 4 is worth 25% of the overall GCSE.
- Opportunities for students to practise the format of the exam questions in their Welsh lessons.
- There will also be revision materials including available on Google Classroom.



Respect, Determination, Honesty
Parch, Penderfynolrwydd, Gonestrwydd



GCSE Skills



Respect, Determination, Honesty
Parch, Penderfynolrwydd, Gonestrwydd



Structure - *Strwythur*

Skills Challenge Certificate components	Weighting	Assessed Skills	Internal Assessment	External Moderation
Individual Project	50%	<ul style="list-style-type: none"> Literacy Numeracy Digital Literacy Planning and Organisation Critical Thinking and Problem Solving 	✓	✓
Enterprise and Employability Challenge	25%	<ul style="list-style-type: none"> Numeracy Digital Literacy Creativity and Innovation Personal Effectiveness 	✓	✓
Global Citizenship Challenge	25%	<ul style="list-style-type: none"> Literacy Critical Thinking and Problem Solving Creativity and Innovation 	✓	✓

Graded A*-C for Level 2 *or* Pass/ Pass* for Level 1.

All components are taught in Year 10

No examinations



Enterprise and Employability Challenge (25%)

- Developing and creating a product/ business for the Castell Alun Christmas Fair
- Dragon's Den Presentation with local employers
- £2,200 raised last Year for Hope House
- Over £10,000 raised in 3 years



Global Citizenship Challenge (25%)

- Exploring a global issue e.g BLM, Abortion, Climate Change, Wind Energy
- Writing a 800 word essay about a global issue
- Raise awareness of global issue

Individual Project (50%)

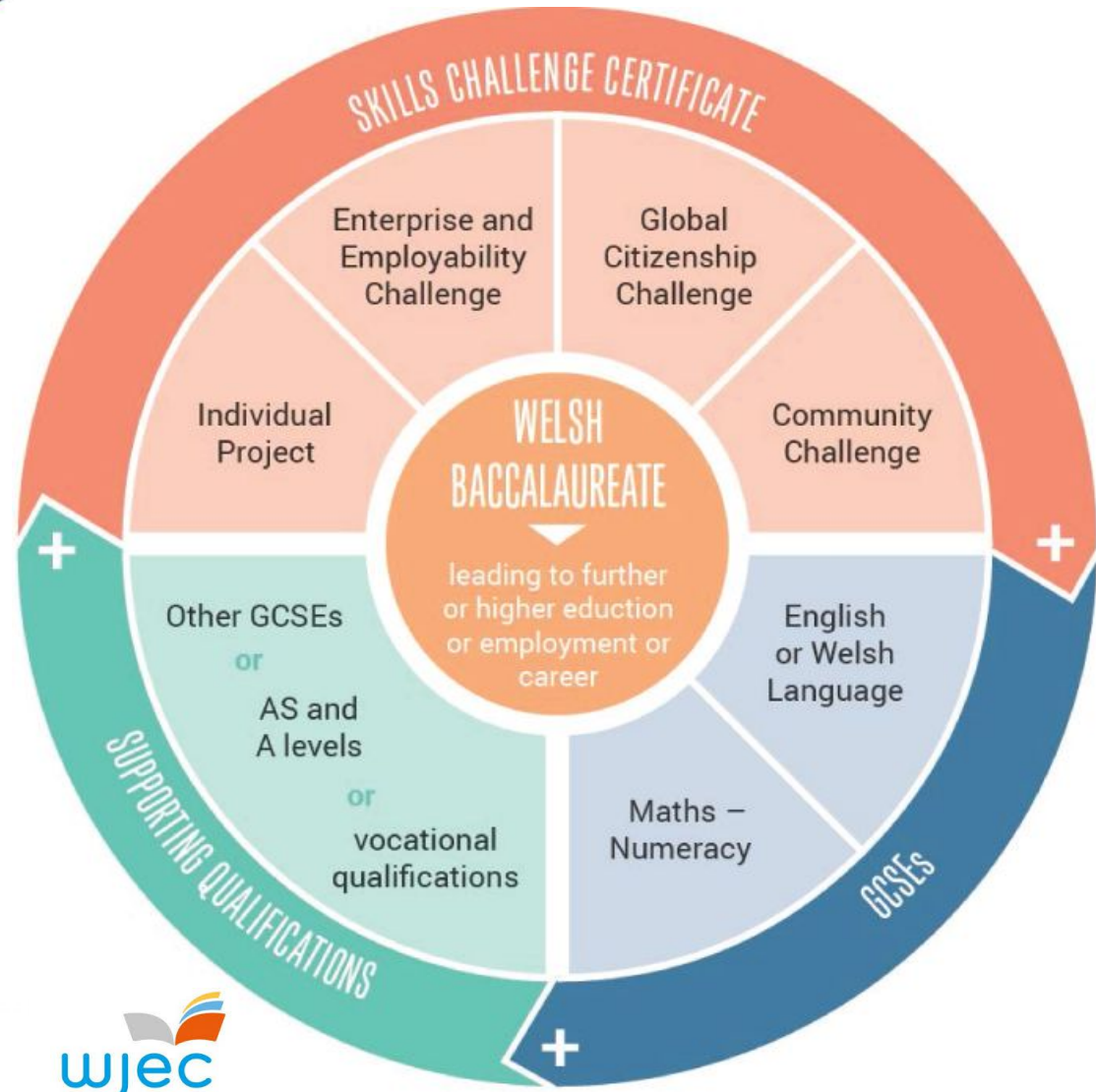
- Research Project – 2000 words
- Topic of student's choice
- Preparation for independent study



Respect, Determination, Honesty
Parch, Penderfynolrwydd, Gonestrwydd



Welsh Baccalaureate – *Bagloriaeth Cymru*



The Welsh Bacc Qualification is made through combining the GCSE Skills grade with English + Maths GCSEs and three other qualifications

National Welsh Baccalaureate = Level 2 Pass

Foundation Welsh Baccalaureate = Level 1 Pass



Respect, Determination, Honesty
Parch, Penderfynolrwydd, Gonestrwydd



English



Respect, Determination, Honesty
Parch, Penderfynolrwydd, Gonestrwydd



Route 1- English Language and English Literature Groups 101a, 1b, 2a,2b, 3a,3b,4a

- **October:** Individual Presentation (10% of Language grade)
- **November:** Poetry Controlled Assessment (12.5% of Literature grade)
- **June 2025** GCSE Literature Exam Unit 2 (40% of Literature grade)



Respect, Determination, Honesty
Parch, Penderfynolrwydd, Gonestrwydd



Route 2- Entry Level English and English Language Groups

104b and 105

October: Topic Tests

November: Practical/Oracy

February/ March Topic Tests

June: Entry Level Exam

Summer Term and Year 11- Students will prepare for GCSE English Language



Respect, Determination, Honesty
Parch, Penderfynolrwydd, Gonestrwydd



Science



Respect, Determination, Honesty
Parch, Penderfynolrwydd, Gonestrwydd



GCSE SCIENCE PATHWAYS

- DOUBLE AWARD SCIENCE
- APPLIED SCIENCE (DOUBLE AWARD)



Respect, Determination, Honesty
Parch, Penderfynolrwydd, Gonestrwydd



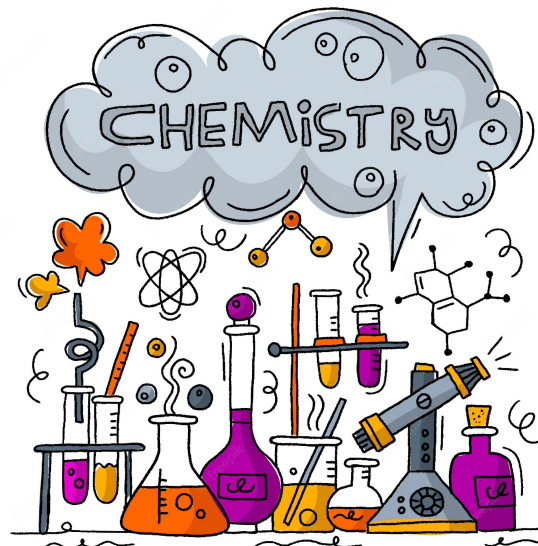
Both pathways have externally marked GCSE exams this year, which contribute to the **OVERALL SCIENCE GRADE**



Respect, Determination, Honesty
Parch, Penderfynolrwydd, Gonestrwydd



Double Award SCIENCE



Respect, Determination, Honesty
Parch, Penderfynolrwydd, Gonestrwydd



5 lessons (5hrs) per week Currently taught on a rota (to 6 classes)

(2 classes are with one teacher - Mrs Pearn and Mr Duffy's groups)

lesson	1	2	3	4	5	New week	1	2	3	etc
subject	B	C	P	B	C		P	B	C	etc



Respect, Determination, Honesty
Parch, Penderfynolrwydd, Gonestrwydd



ONE QUALIFICATION, worth TWO GCSEs

Assessment: 3 units in Year 10, 3 units in Year 11

Each unit = 15%

45% of the qualification completed in year 10

45 % in year 11.

Additional 10 % is a practical exam in January + February of Year 11.



Respect, Determination, Honesty
Parch, Penderfynolrwydd, Gonestrwydd



Exams are tiered: HIGHER and FOUNDATION.

Students can take H tier in some units and
F tier in others.

How we decide.....

The data collected from September, on each child, is used to determine the tier of entry: the decision is made in MARCH (exam board rules)



Respect, Determination, Honesty
Parch, Penderfynolrwydd, Gonestrwydd



Double Award APPLIED SCIENCE



Respect, Determination, Honesty
Parch, Penderfynolrwydd, Gonestrwydd



UNIT 1	Written exam YEAR 10	22.5%
UNIT 2	Written Exam Year 10	22.5%
UNIT 3	Written exam Year 11	25%
UNIT 4	Task based Nov- Dec Year 11	20%
UNIT 5	Practical exam Jan – Feb Year 11	10%



Respect, Determination, Honesty
Parch, Penderfynolrwydd, Gonestrwydd



UMS	720	680	640	600	560	520	480	440	400
Subject Grade	A*A*	A*A	AA	AB	BB	BC	CC	CD	DD
UMS	360	320	280	240	200	160			
	DE	EE	EF	FF	FG	GG			

15 point Grading scale – for both Double Awards

EVERY UMS MARK GAINED IN YEAR 10 and YEAR 11 COUNTS!



Respect, Determination, Honesty
Parch, Penderfynolrwydd, Gonestrwydd



EXAM DATES Summer 2025

Monday 9th June – Biology + Applied

Friday 13th June – Chemistry

Monday 16th June - Physics

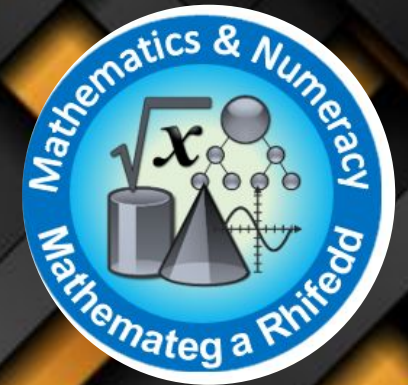
Provisional WJEC exam timetable (Sept. 2024)



Respect, Determination, Honesty
Parch, Penderfynolrwydd, Gonestrwydd



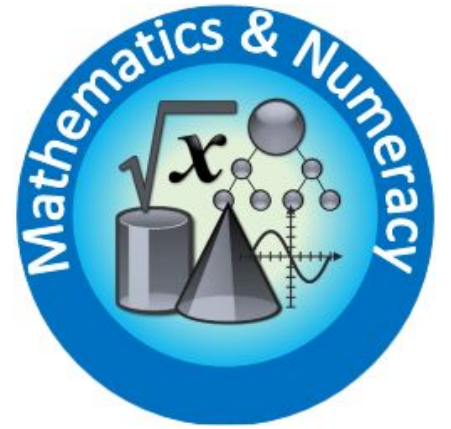
Mathematics and Numeracy



Respect, Determination, Honesty
Parch, Penderfynolrwydd, Gonestrwydd



Mathematics and Numeracy



- Two separate GCSE qualifications
- 4 hours a week in Year 10 and 11
- 100% Exam based
- Each qualification comprises of a non-calculator and calculator paper
- Mock exams in February
- Possibility of being entered for an exam in Summer 2025 depending on progress during Year 10
- Some students may have the opportunity to study additional Mathematics in Year 11



Respect, Determination, Honesty
Parch, Penderfynolrwydd, Gonestrwydd



EXAM DATES

Mathematics - Numeracy GCSE

8th May 2025

4th June 2025

Mathematics GCSE

15th May 2025

11th June 2025



Respect, Determination, Honesty
Parch, Penderfynolrwydd, Gonestrwydd



Year 10 Core PE

Year 10 students have **one hour of compulsory PE** each week.

Vital for health and well-being; full participation is expected.

Students **cannot attend other subjects** during PE, unless arranged with staff.

Students must bring **full PE kit** to each session.

Same sanctions as in lower school for non-participation.



Respect, Determination, Honesty
Parch, Penderfynolrwydd, Gonestrwydd



Access Arrangements and Reasonable Adjustments

What are Access Arrangements?

Access arrangements are adjustments that allow students with specific needs, such as additional learning needs and disabilities to access an exam. They allow students to show what they know and can do, without changing the demands of the exam.

How will the process start?

The ALNCo and access arrangement assessor work with teachers and students to identify possible arrangements.

Various arrangements are available, but must be **based on normal way of working** e.g. support for difficulties with reading, writing, speed of working and concentration.

Not all students with additional needs will require access arrangements. It depends on whether their difficulty affects their access to exams. **Additional needs alone do not entitle a student to access arrangements.**

JCQ state that there needs to be **'evidence of a significant and longstanding history of impairment in order to qualify to be assessed for an access arrangement'**.

Who will make the assessment?

The qualified access arrangements assessors will make the assessment following the JCQ regulations.

Specialists e.g. medical consultants provide diagnosis but are not responsible for assessing whether access arrangements are appropriate.

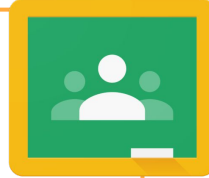
Schools must follow the rules. They are inspected and if they are found to be breaking the rules, this will be classed as malpractice. All access arrangements need to be processed by 21/3/25



Respect, Determination, Honesty
Parch, Penderfynolrwydd, Gonestrwydd



Communication



GOOGLE CLASSROOM

Google Classroom is an online learning platform that we use where students can access course resources, communicate with teachers and participate in course activities. Your child is able to store their work and complete homework on the platform.

GOOGLE EMAIL SUMMARY

This feature allows you to keep up to date with any classwork that your child has been undertaking as well as homeworks set with deadlines (including any homework they have missed).

Teachers can communicate to you on this platform too.

SIMS ONLINE PARENT APP

We use the SIMS online parent app to help you to keep up to date with information about your child's school life. You can access the system from a smartphone, tablet or PC.

The APP allows parents/carers to know:

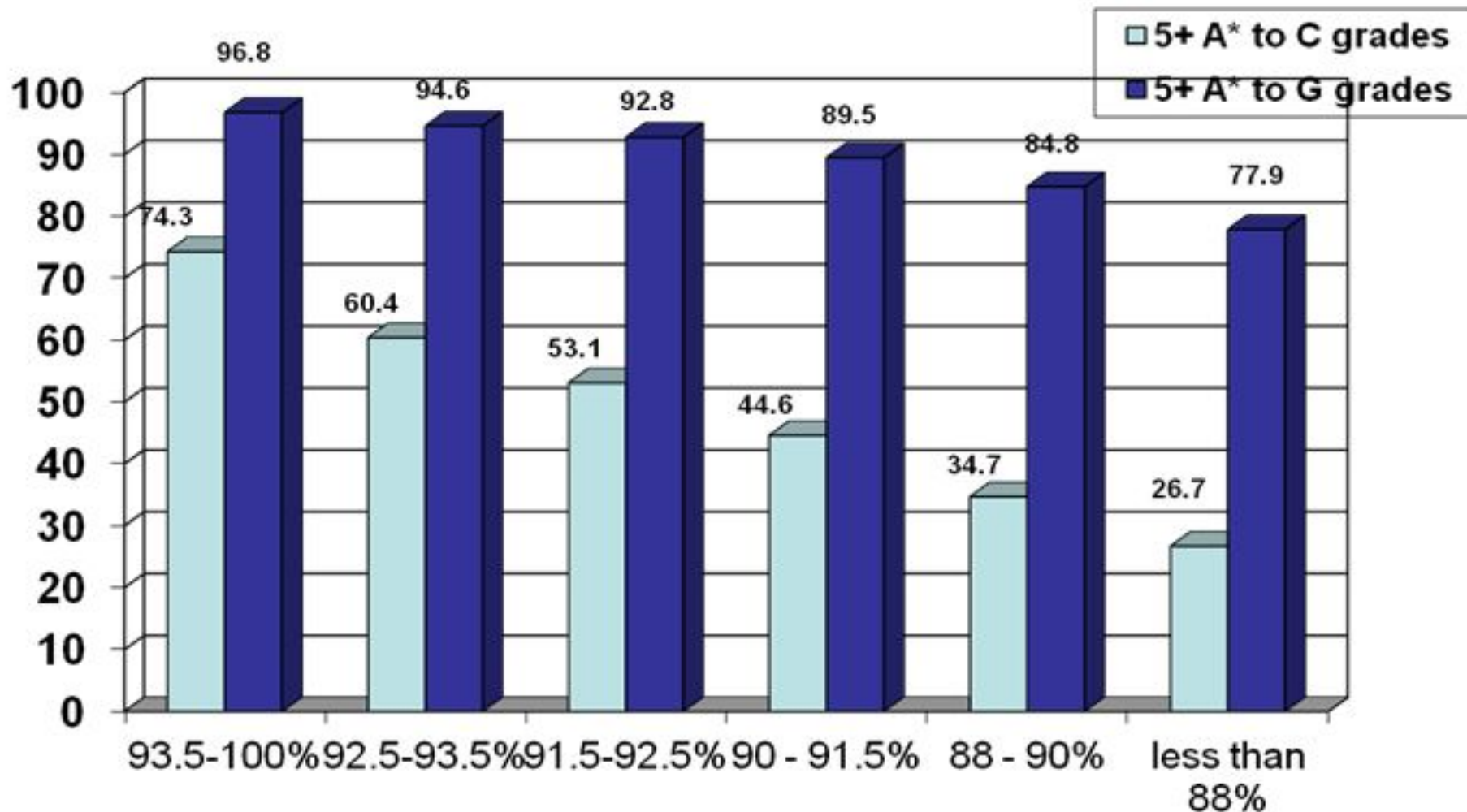
- Important information such as attendance, behaviour, achievements, and timetable.
- School calendar and training days.
- Letters and correspondence either for your child, their class, whole year or whole school information.

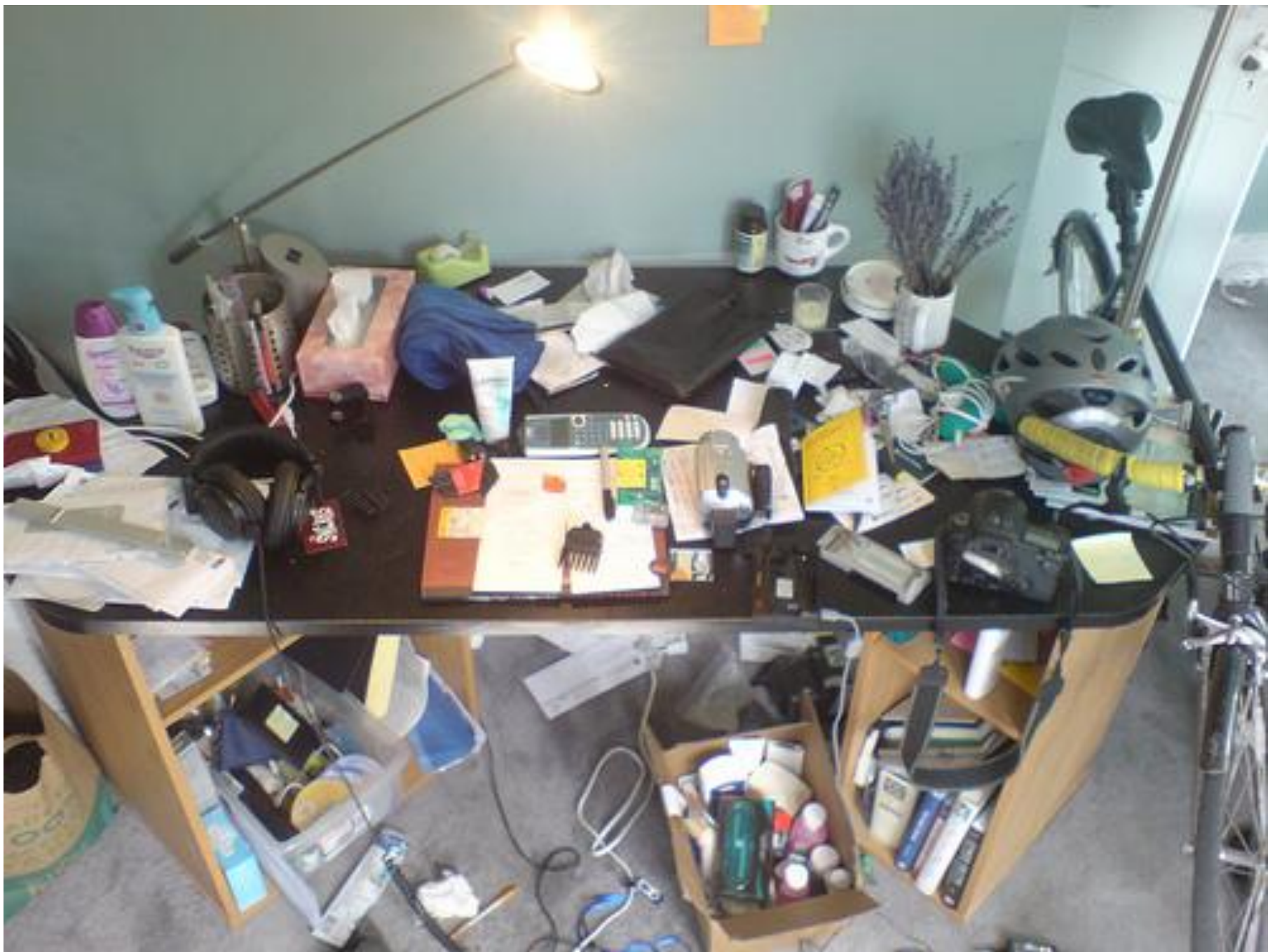


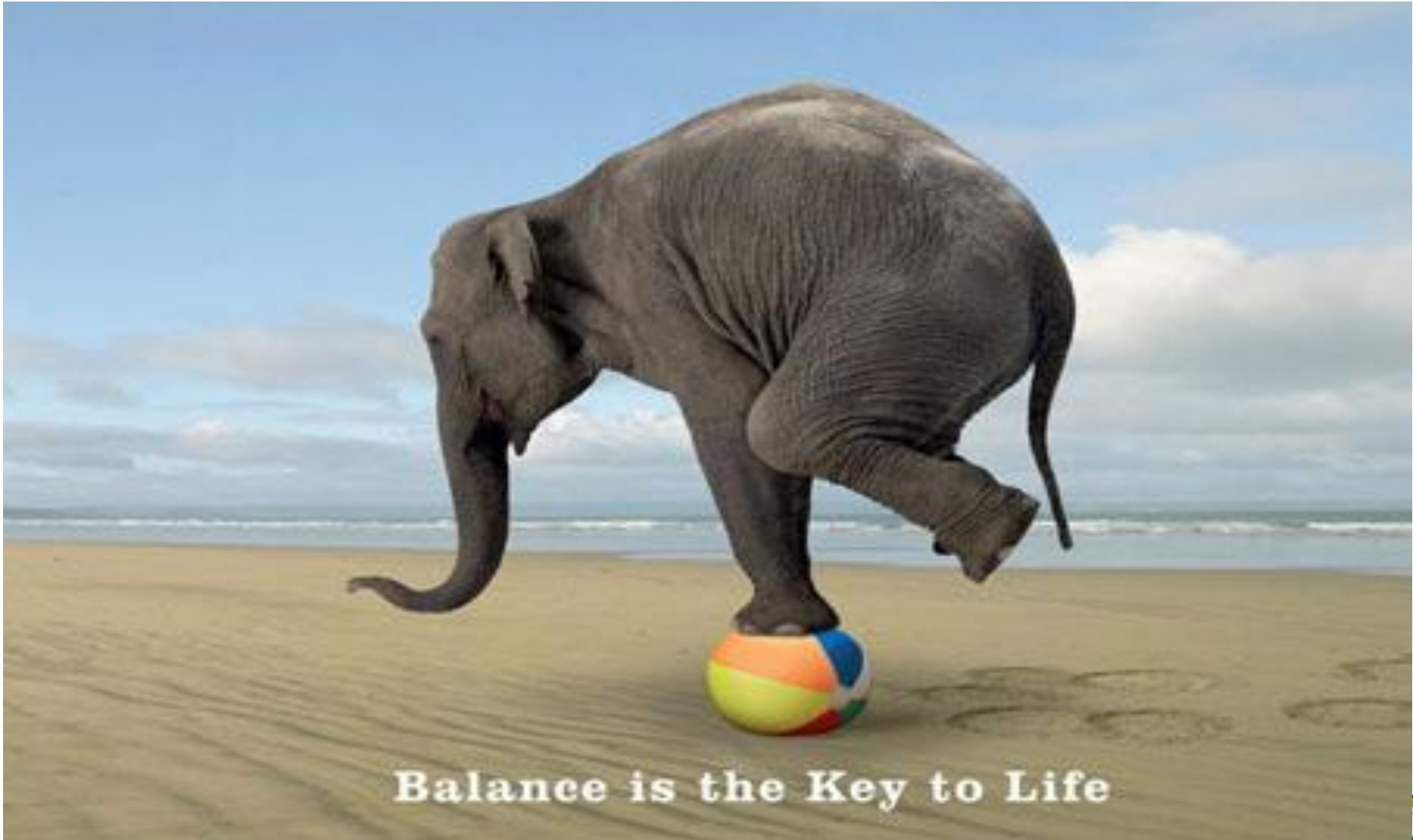
Respect, Determination, Honesty
Parch, Penderfynolrwydd, Gonestrwydd

Attendance

90% attendance means that a student misses the equivalent of **four weeks** of lessons in the school year.







Balance is the Key to Life



Respect, Determination, Honesty
Parch, Penderfynolrwydd, Gonestrwydd



Family
and
Friends

