



Respect, Determination, Honesty Parch, Penderfynolrwydd, Gonestrwydd

# Sixth Form Prospectus

## Prosbectws y Chweched Dosbarth

# Contents Cynnwys



☎ 01978 760 238

✉ [main@castellalun.flintshire.sch.uk](mailto:main@castellalun.flintshire.sch.uk)

🌐 [www.castellalun.com](http://www.castellalun.com)

✂ @CastellAlun

Castell Alun High School, Fagl Lane, Hope,  
Flintshire LL12 9PY

3. Word of Welcome
4. Sixth form Leadership Team
5. Tutors
6. Student Opportunities
7. Why Castell Alun?
8. Community Participation
9. Supervised Study / Welsh Baccalaureate
10. Opportunities for Leadership
11. Music/Drama/Sport
12. Common Room
13. Trips
14. The Seren Network
15. Aiming High at Castell Alun
16. A Level Results 2024
17. Other Information
18. Admissions
20. Your Course Option



## EXPRESSIVE ART & TECHNOLOGY

22. Acting Drama
23. Performing Arts
24. Alumini
25. Art & Design
26. Music
27. Computer Science
28. Design & Technology



## HEALTH & WELLBEING

29. BTEC Sport
30. Health, Care & Childcare
31. Physical Education
32. Food Science and Nutrition



## HUMANITIES

33. Business
34. Criminology
35. Economics
36. Geography
37. History
38. Politics
39. Psychology
40. Religious Studies



## INTERNATIONAL LANGUAGES

41. Cymraeg
42. French
43. German
44. Spanish



## LANGUAGES, LITERACY & COMMUNICATION

45. English Language
46. English Literature



## MATHEMATICS & NUMERACY

47. Further Mathematics
48. Mathematics



## SCIENCE

49. Biology
50. Chemistry
51. Physics





**Mrs Helen Williams**  
Chair of Governors

# Word of Welcome / Gair o Groeso

## **Thank you for your interest in joining our Sixth Form at Castell Alun.**

This Prospectus will hopefully give you a flavour of life here and a clear understanding of the courses we offer and where they could lead.

We pride ourselves on the quality of our teaching, our outcomes and just as importantly our care, support and guidance for students throughout their post 16 education. As part of a large, happy and close-knit community, our Sixth Form students work very hard academically but also enjoy a tremendous range of other

opportunities including, trips, charity work, work experience, competitions and social events.

A great majority of our Sixth Form students go on to study at the university of their choice with other students opting for prestigious higher apprenticeships, employment or college courses. We are very proud of our reputation and the academic and personal success of our students over the years. We value every student highly and aim to provide the best possible support and guidance in helping every learner to maximise his or her potential, whichever path they choose upon

successful departure from our school.

Whatever their next step, students remain a part of the Castell Alun family and we are always pleased to hear where life has taken them as they go on to enjoy successful careers in every walk of life.

I hope that you will enjoy our **Sixth Form Open Evening, on Thursday 6th February 2025.**

This will be an opportunity for you to engage with staff and students about the experiences on offer at Castell Alun.

**Mr C. Ellis**, Headteacher.



### Miss Sarah Edwards

Studying in the Sixth Form is going to be one of the most exciting and important stages in your educational career. Not only do you get to focus your studies on those subjects you enjoy the most and which really interest you, at Castell Alun High School you get to do all of that within a supportive and inclusive community.

Here at Castell Alun we actively encourage you to engage in the many opportunities Sixth Form life provides, whether that's going on the many various trips on offer, supporting good causes through the charity committee or by becoming a Sixth Form Ambassador. Being in the Sixth Form is more than just studying, it's being part of a community within the school as well as the wider school as a whole.

The Sixth Form is also here to help prepare you for the next important stage of your life, whether that's going to university, finding an apprenticeship or entering the world of work.

Whatever your aspirations and chosen destination post Sixth Form, we are here to support you and offer you all the help and guidance you need to make a success of your next step.



### Miss Lauren Robinson

As the Assistant Director of the Sixth Form, my role is to help support you in achieving your full potential. Part of this role includes ensuring you have the right pastoral support to suit your individual needs and to help promote and foster positive wellbeing within the Sixth Form. I am also responsible for destination planning and work closely with students that are pursuing employment and apprenticeship routes post-18. This includes helping develop important soft skills necessary for the world of work. I work closely with a number of student groups including the Sixth Form Charity Committee to help foster a community spirit in our Sixth Form. I am very proud and privileged to be a part of the Sixth Form at Castell Alun and hope you will enjoy being part of our Castell Alun Sixth Form family!



### Mrs Diane Jones

In my role as Sixth Form Administrator, I am here to support students during their study sessions.

The study areas are used by many students during their non-contact time to further their studies in an appropriate learning environment.

I provide support to the Sixth Form Team and the Senior Leadership Team, providing attendance, attainment and conduct data when required.



**Sarah Edwards** - Director of Sixth Form studies / Assistant Head

sarah.edwards@castellalun.flintshire.com

**Lauren Robinson** - Sixth Form Assistant Student Development Manager

lauren.robinson@castellalun.flintshire.com

**Diane Jones** - Sixth Form Administrator

diane.jones@castellalun.flintshire.com



# Access to Tutors/SDM

Every day there is access to a Group Tutor, who will provide academic and non-academic support. The Director of Sixth Form Studies and the Assistant Director are based in the Sixth Form area and are available at all times, as part of our 'Open Door Policy'.

*"I am so grateful to Castell Alun for all the time and effort they have given my daughter. Nothing is ever too much trouble. If I have an issue it is resolved with prompt communication to let me know what's gone on. I can't rate the school highly enough and I will be forever grateful for everything they have done." - Parent*



## Class Sizes

Lessons are taught by subject specialists and class sizes range from single figures to no more than twenty.

## Facilities

The Sixth Form study area, Common Room and Snack Bar are for the use of Sixth Formers only. There are plenty of computers available and an opportunity for silent study.

## Advice

Careers Advice and university advice are readily available with access to Alumni and experts in the field.





## Sixth Form Council

Each Tutor Group elects two representatives to sit on the Sixth Form Council. The Council meets on a regular basis and will discuss issues such as the Study Areas, Common Room and external events.

Two members of the Sixth Form Council will be co-opted to sit on the School Council. In addition to this there are Sixth Form committees connected to charity fund raising.



## Student Ambassadors

The Senior Student Ambassadors are Sixth Form Students, who have been chosen specifically to represent their peers. They are on the School Council and are Associate Governors.

Our Seren Student Ambassadors are heavily involved with Student Voice and act as a link between the students and staff.



## Students from other schools

Castell Alun is an 'open' Sixth Form. Students from other schools are welcome to study here.

Last year 30 students joined us from other schools. These students enhance the Sixth Form and quickly become valued and integral members of the senior school.





## Why Castell Alun?

We are a school with a Sixth Form, therefore there are numerous opportunities to improve and enhance the skill set of each Sixth Form student as well as their C.V., for instance, coaching in the P.E. department, helping with Numeracy and Literacy lessons as well as being a Teaching Assistant in lessons.

"It was a big change moving to a new school. Castell Alun staff made the transition easy through the welcoming teachers and polite and friendly students in all year groups. I found it easy to make new friendship groups and to settle in to school life. There are lots of extra-curricular activities at the school and you quickly become part of the school community." - **Student**

Castell Alun is an extremely friendly school that fosters an excellent environment for students to improve their academic and social abilities. - **Student**

All the Sixth Form teachers are very understanding of the struggles that students face and offer help and guidance to support their Sixth Form journey. - **Student**

"I have been really impressed by the learning environment at Castell Alun Sixth Form. It encourages you to apply yourself and meet your full potential. You are given plenty of feedback to ensure that you are making progress towards your future aspirations. Teachers are incredibly supportive and will guide you. I have enjoyed the challenge of coming to a new school immensely. - **Student**



See whats on offer...



## The Sixth Form Area

## Charity Work and Community Participation

**The Sixth Form area offers spacious, modern study and recreational facilities.**

It is an integral part of the school and the Common Room and Study Areas allow students a greater degree of independence and responsibility. Study will be timetabled as will free time.

**Sixth Form students select a charity to support each year e.g. Young Minds, Jeans for Genes, Alzheimers Association, Save the Children, Alder Hey Children's Hospital.**

By virtue of team work and perseverance, sums of money are raised for the benefit of a selected charity. Students have a wide choice

of community activities in which they can participate. They enjoy working with the wider community of which the school is a part. In this way, young people help those who are much less fortunate than themselves whilst learning vital planning skills in co-ordinating entire events.



*"Being part of the charity committee is a really rewarding experience which contributes largely to the school and community by organising events that bring everyone together".*  
- Olivia



# Study Area

**Included in the Sixth Form area are two distinct study areas, one for Year 12 and an additional area for Year 13. Students can use their non-contact time to further their studies in an appropriate learning environment. Independent learning is a vital component of life in the Sixth Form**

There is a suite of computers for all students to use to aid their studies. These facilities are open to the Sixth Form from 7.15 am to 6.00 pm and are used by many students outside the normal working hours of the school. This independent study, whilst supervised, enables students to plan their time effectively whilst building on their contact time with their teachers.



# The Welsh Baccalaureate Advanced Qualification

**The Welsh Baccalaureate is an exciting qualification that adds a valuable new dimension to the subjects and courses already available to students.**

It combines personal development skills with a student's option choices to make one wider award that is valued by employers and universities.

The Welsh Government introduced the Welsh Baccalaureate to transform learning for young people in Wales.

It gives broader experiences than traditional learning programmes, to suit the diverse needs of young people.

Sixth Form students at Castell Alun participate in the Welsh Baccalaureate Qualification at Advanced Level.

The subject is a significant element of university offers.

# Opportunities for Leadership

**Sixth Form students are encouraged to develop their leadership skills by taking advantage of the opportunities that working with younger students allow.**

For example, as part of the community participation element of the Welsh Baccalaureate, valuable experience for Sixth Form students is the 'Buddy' paired reading scheme with Year 7 students.

Many more opportunities for leadership are available within the Sixth Form, including involvement in lower school lessons as teaching assistants. This also provides valuable experience for a student's personal statement for UCAS.



## Duke of Edinburgh

**The Duke of Edinburgh Gold Award is offered in Years 12 and 13. Expeditions are taken after the examination season, and have in recent years been to Snowdonia and the Lake District.**

Students are fully supported throughout the two years to complete the various sections. It develops a range of skills and is highly regarded by universities and future employers.

*"Participation rates in the extra curricular programme, which includes a wide range of sporting, academic and curricular activities, are very high"*

**ESTYN**



# Music / Performing Arts



**Various musical ensembles are available to the Sixth Form students.**

Students take a leading role in many of the Drama and Music productions that take place within the school. Many students enjoy this aspect of extra curricular work and remain very loyal to whole school events. Sixth Form students often take an active part in performing at events which include our feeder primary schools.



# Sport

**A significant number of students from the Sixth Form have represented the school at County, National and International level in a variety of sports including:**

***NETBALL, RUGBY, FOOTBALL AND ATHLETICS.***

Sixth Form students are encouraged to coach younger children.

The various sports schemes allow students the opportunity to develop their coaching skills and to gather evidence for accreditation in their Welsh Baccalaureate.

# Common Room

This facility is based in the Common Room where students can have their 'down time'. The initiative came about as a direct result of discussions with the Sixth Form Council to improve facilities.

Here students can have the space to socialise in their free time. Many of our charity events are held in here.





# Trips

If you want to discover learning outside the classroom, how about trips to ...

**Berlin and Krakow** with Humanities and German.

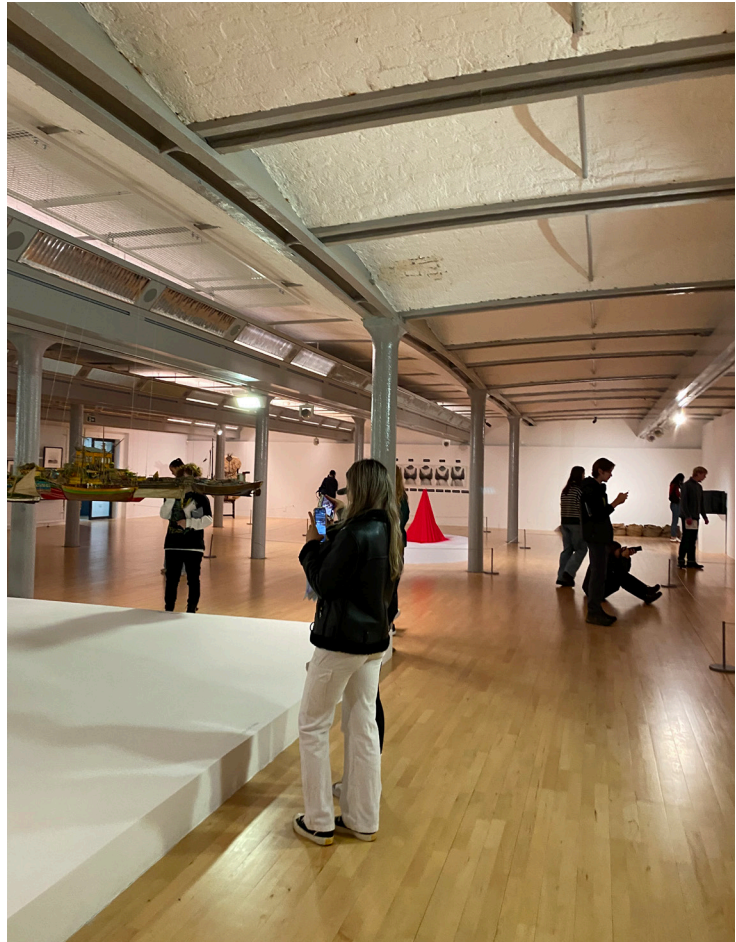
**Shrewsbury Prison** with Criminology.

**Liverpool, the North Wales Coast, the Dee Valley and Snowdonia** with Geography.

**London** with English, **Welsh Language residential course** with cymraeg.

Visits to **Local and National Galleries and Locations for Creative Inspiration** with Art Learning areas

*That's just a sample of what's on offer.*





# The Seren Network

The Seren Network supports high achieving Sixth Formers to reach their academic potential, through a programme of super-curricular activities.



As a member of the Flintshire / Wrexham partnership students will be given information, advice and guidance on how to make a competitive application to leading universities. The local Seren Hwb is a partnership of teachers from schools and colleges in the area. They are supported by

leading universities, local government and the Welsh Government.

To qualify students must have achieved 5A\* or equivalent in their GCSE examinations. For the academic year beginning September 2023, Castell Alun had fifty seven students

who achieved this benchmark.

**For more information on the Seren Network and your local hub, visit the Seren Network website:**  
**[www.gov.wales/seren](http://www.gov.wales/seren)**



# Aiming High at Castell Alun

## The Russell Group

**The Russell Group represents 24 leading UK universities, which are committed to maintaining the very best research, an outstanding teaching and learning experience and unrivalled links with business and the public sector.**

Russell Group universities play an important part in the intellectual life of the country and have a huge impact on the social, economic and cultural well-being of their regions. Their aim is to ensure that each university has the optimum conditions in which to flourish whilst continuing to make an impact through their world leading research and teaching.

Castell Alun students apply to and attend universities all over the U.K., including Russell Group universities. Where relevant, students are encouraged to apply to Russell Group universities and some of those universities also visit the school. Open days are used to enable students to meet the relevant staff whilst getting a 'feel' for each university.

Last year some 28 Castell Alun Students were successful in their application to Russell Group universities.



"I studied at Castell Alun Sixth Form for two years to complete my AS and A Level examinations.

The facilities, staff and opportunities have left a lasting impact upon me. The Sixth Form uses every possible method to offer students the chance to succeed in their chosen field, whether that be university, apprenticeships or otherwise.

The passion for their subjects and the quality of teaching results in students developing a greater interest in the subjects too.

I remain ever grateful for the commitment shown by staff and hope that future students take advantage of this.

The support provided to me at Castell Alun allowed me to reach the highest possible results which enabled me to then go on to one of the UK's best universities.

The foundations for any student to thrive are already well established within the school. The warmth within this learning environment ensures that all involved feel welcomed, motivated and supported in achieving their unique aims. The staff take pride in helping you find your goals or in making them possible."

- Harry

Studying Business Management with  
German at Bath University

# A Level Results 2024

A Level Subjects		A*	A	B	C	D	E	U
Art & Design	12	0	3	3	5	1	0	0
Biology	21	0	6	5	8	1	1	0
Chemistry	8	0	4	0	3	1	0	0
Computer Studies/Computing	5	1	1	1	1	1	0	0
CRIMINOLOGY Social Science L3	48	0	6	12	21	5	3	1
D&T Product Design	5	0	1	2	1	0	1	0
Economics	14	0	2	1	5	6	0	0
English Language	14	0	3	10	1	0	0	0
English Literature	8	1	1	3	3	0	0	0
Geography	11	0	0	3	6	0	2	0
Health & Social Care	9	0	1	3	4	1	0	0
History	25	0	5	11	9	0	0	0
Mathematics	24	0	5	8	6	3	2	0
Mathematics Further	7	1	1	2	1	1	1	0
Music	4	0	1	0	3	0	0	0
Physics	17	1	3	5	5	3	0	0
Politics	7	0	3	3	1	0	0	0
Psychology	39	3	8	12	9	7	0	0
Religious Studies	8	1	3	2	2	0	0	0
Spanish	4	0	0	1	1	2	0	0
Sport/PE Studies	8	0	3	5	0	0	0	0
Overall totals /exc WBQ)	298	8	60	92	95	32	10	1
Baccalaureate WBQ/A	68	4	14	23	23	3	1	0
Overall totals (inc WBQ)	366	12	74	115	118	35	11	1

%A* - A	%A* - C	%A* - E
25	91.7	100
28.6	90.5	100
50	87.5	100
40	80	100
12.5	81.25	97.9
20	80	100
14.3	57.1	100
21.4	100	100
25	100	100
0	81.8	100
11.1	88.9	100
20	100	100
20.8	79.2	100
28.6	71.4	100
25	100	100
23.5	82.3	100
42.8	100	100
28.2	82	100
50	100	100
0	50	100
25	100	100

Vocational Subjects	Entries	Numbers achieving										Percentage		
		D*	D	M	P	D1 (D*D*)	D2 (D*D)	DD	DM	MM	MP	PP	Distinction or above	Pass or above
Business and Finance BTEC/EC3	33	15	10	8	0	0	0	0	0	0	0	0	75.7	100
Food Science L3	2	0	0	1	1	0	0	0	0	0	0	0	0	100
Performing Arts BTEC/EC3	17	2	3	7	4	2	0	2	0	1	0	0	29.4	100
Performing Arts BTEC/D13	3	0	1	4	1	0	0	0	2	0	1	0	66.7	100
Sports Coaching BTEC/EC3	2	0	0	2	0	0	0	0	0	0	0	0	0	100



# Other information Gwybodaeth Arall

## Sixth Form Dress Code

**Uniform requirement is relaxed in the Sixth Form but students are expected to set an example to younger children in school.**

**The following 'dress code' has been devised by the Sixth Form and we would appreciate wholehearted co-operation from students and their parents in this matter:**

Appropriate T-shirts, polo shirts, rugby tops and shirts/ blouses are the norm, but we would ask that students refrain from showing a bare midriff or wearing items which may be considered offensive.

Sixth Form students are most welcome to wear smart jeans or in the summer tailored shorts.

These should not be too short or sports / swimming style shorts.

Please be aware that we are a Sixth Form within a school, and that Sixth Form students set examples for others to follow.



# Admissions

Students wishing to access courses at Sixth Form must meet the following entry requirements:

## AS courses:

A minimum of 5 A\* - C grades at GCSE or BTEC.

## A2 Courses:

At least an E grade on the corresponding AS course.

*In all cases a good attendance record during KS4 education is required.*

*We do take into account extenuating circumstances.*

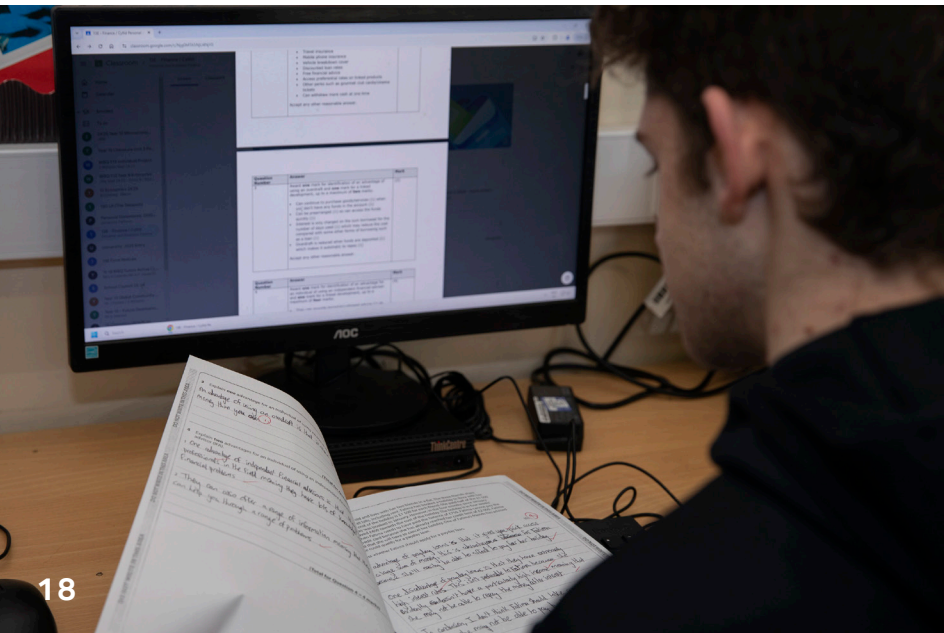


# Education Maintenance Allowance (EMA)

From September 2014, students in Wales are eligible for an Education Maintenance Allowance, if they are aged 16, 17 or 18 years old on 31st August 2025.

If you are the only young person in full time education in your household and your household income is less than £20,817, then you could receive £40 per week.

If there are other young people in full time education, who also qualify for child benefit in your household, and your household income is less than £23,077 then you could receive £40 weekly.



Further information is available from:  
[www.studentfinancewales.co.uk/ema](http://www.studentfinancewales.co.uk/ema)  
or you can call 0845 602 8845



## January

Individual Interviews with SDM

## January

Year 11 - 12 Promotional Talks  
Year 11 Mock Exams  
6<sup>th</sup> February 2025 Open Evening

## 7<sup>th</sup> March

Application Form Deadline

## 25<sup>th</sup> June

Induction Day for External Students  
(provisional)

## 21<sup>st</sup> August

GCSE Results: Support & Guidance

## 2<sup>nd</sup> September

Sixth Form Enrolment

Throughout the year, personal tours of the school can be arranged

# Year 11 - 12 Transition Admissions Procedure





Your Course  
Options

Eich Opsiynau  
Cwrs

What's Your Next Step?



# Which Course to Follow? Pa Gwrs I'w Ddilyn?

Your choice of subjects will be influenced by three interacting considerations:-

1. Which subjects do you enjoy?
2. Which subjects will produce your best exam results?
3. Which subjects are required for the career you have in mind?



Your present interest in a subject is usually a realistic guide to the choice you should make but be careful!

Subjects can change substantially between Year 11 and the Sixth Form, concentrating on different aspects and demanding an alternative style of work.

Subjects you find dull now may be much more attractive to you at Sixth Form level and of course, vice versa.

You may also wish to study a subject not offered at GCSE.

It may be difficult to predict your summer exam results. While mock exams will give an indication, your **teachers** will know if you have the ability to study their subject.

Their advice is invaluable ... **Take advantage of it.**

There are certain combinations of subjects that you must take if you wish to pursue specific careers. This requires specialist help which you can obtain from the Director of Sixth Form Studies and her team, Learning Managers and Subject Teachers.

Qualification: **Level 3**

Exam Board: **BTEC**

Course Director: **Mrs Rebecca Lloyd-Jones**

Subject Staff: **Mrs April Venn**  
**Mr Peter Edwards**  
**Mrs Rhodes-Leader**

Option: **2**

# Performing Arts, Acting

## Celfyddydau Perfformio, Actio

### **Level 3 BTEC National Foundation Diploma in Performing Arts (Dance or Acting Pathway)**

BTEC Level 3 National Foundation Diploma in Performing Arts is a vocational course that is equivalent to 1.5 A-Levels and gives equivalent UCAS points if you are considering applying for university (learners should always check the entry requirements for degree programmes at specific higher education providers). It provides students both with practical skills and theoretical knowledge in creating, analysing and evaluating the performing arts. Students study six units across the two years. Units 1 and 3 are externally assessed. The remaining units are internally assessed. Optional units are chosen according to the specialisms of the cohort and vary from year to year.

If you have a specific specialism that you would like to focus on, then this can be accommodated in the optional units. You can specialise in Dance or Acting or combine your interests.

#### **Unit 1: Investigating Practitioners Work (90 Guided Learning Hours)**

Students investigate the work of performing arts practitioners and develop critical analysis skills and contextual understanding of how practitioners communicate themes in their work.

#### **Unit 2: Developing Skills and Techniques for Live Performance (90 Guided Learning Hours)**

Students investigate the work of performing arts practitioners and develop critical analysis skills and contextual understanding of how practitioners communicate themes in their work.

#### **Unit 3: Group Performance Workshop (120 Guided Learning Hours)**

Students explore and integrate creative, physical and vocal skills and techniques, working collaboratively to create a performance in response to a given stimulus.

#### **Unit 4: Performing Art in the Community (90 Guided Learning Hours)**

Students develop their knowledge and understanding of performing in the community, applying specialist skills and techniques to a community performance project.

In addition to the performing arts sector-specific content, this qualification provides students with the opportunity to develop all-round performance skills and transferable skills such as self-confidence, self-presentation, personal discipline, time management and organisational skills which are highly regarded by higher education and employers. The qualification is intended to carry UCAS points and is recognised by higher education providers as contributing to meeting admission requirements for relevant courses. When taken alongside another Level 3 qualification, the BTEC National Foundation Diploma in Performing Arts will offer the opportunity to progress onto performing arts-related degree courses.





# Performing Arts, Dance & Production

## Celfyddydau Perfformio, Dawns a Cynhyrchu

### Level 3 BTEC National Foundation Diploma in Production Arts Practice (Pathway)

BTEC Level 3 National Foundation Diploma in Production Arts is a vocational course that is equivalent to 1.5 A-Levels and gives equivalent UCAS points if you are considering applying for university (learners should always check the entry requirements for degree programmes at specific higher education providers). This qualification offers learners the opportunity to develop their performance and technical skills through a process of self-evaluation, practice and review which supports them as they start to build their personal portfolio in preparation for entry to higher education or work placements.

Learners taking this qualification will study two mandatory learning and teaching modules: Skills Development and The Production Arts Industry. Both of the modules are internally assessed. Learners can choose to specialise in the following:

**Production Art Skills (combination of all skills) - Design Skills  
Technical Skills - Management Skills - Makeup Skills**

### Where can the BTEC Level 3 National Foundation in Performing Arts take me?

In addition to the performing arts sector-specific content, this qualification provides students with the opportunity to develop all-round performance skills and transferable skills such as self-confidence, self- presentation, personal discipline, time management and organisational skills which are highly regarded by higher education and employers. The qualification is intended to carry UCAS points and is recognised by higher education providers as contributing to meeting admission requirements for relevant courses. When taken alongside another Level 3 qualification, the BTEC National Foundation Diploma in Performing Arts will offer the opportunity to progress onto performing arts-related degree courses.

Qualification: **Level 3**

Exam Board: **BTEC**

Course Director: **Mrs Rebecca Lloyd-Jones**

Subject Staff: **Miss April Venn**

Option: **3**



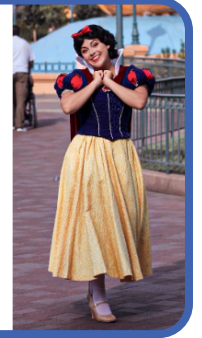
# Performing Arts Alumini



## Amelia Shallish

Broadcast Journalist, Disney Character Performer

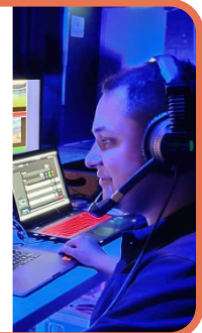
Amelia continued to study Dance and Drama in Edge Hill University after leaving Castell Alun. Once she graduated, she got a job at Disneyland Paris as a parade and character performer. After three years of working with Disney, Amelia retrained in Broadcast Journalism at Salford University. She now works as a journalist for the BBC in Leeds.



## Jordan Barnes

Stage Manager, Company Manager, Technician

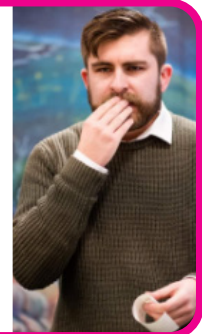
Jordan studied Production Arts at Castell Alun, after which he went on to West Cheshire College to study Technical Theatre. Finally, at the University of Wolverhampton, Jordan earned a first-class honours bachelor of arts degree for Production and Stage Management. He then went on to manage a Wirral-based theatre group for three years, and now works as a freelance stage manager.



## Dave Humphreys

Director, Actor, Practitioner, Tutor, Welfare Officer

Dave studied Drama as an A-Level at Castell Alun. He would then go on to earn a BA (Hons) in Drama and Theatre Studies and an MA in Drama at the University of Chester, as well as a PGCE and a PhD at Edge Hill University. He has also worked with Theatr Clwyd's creative engagement department as a welfare officer and assistant facilitator, Hijinx Theatre as a tutor, and Altru Drama as an actor and practitioner. Dave also presented research in Havana, Cuba as part of the ASSITEJ 21st World Congress focused on TIE and suicide prevention within the curriculum.



## Rachel Harper

Actress, Television Writer, Content Creator

After undertaking her A-level drama at Castell Alun, Rachel went on to drama school to study acting, and there she began writing. After graduating and moving to London, Rachel formed the theatre company, MISSMANAGED, who championed female and non-binary creatives. Her first full length one-woman play, Rattled, was performed in an off West End run at the Old Red Lion Theatre in London, earning her an OFFIE nomination.





# Art & Design

## Celf a Dylunio

A Level Art and Design is a subject for students who take real pleasure in a wide range of creative practices.

The course will develop your ability to appreciate the visual world and to respond in a personal and innovative way. It will also develop you as a creative thinker, fostering the ability to research, evaluate and develop personal ideas to a conclusion.

The practical skills you will develop will be varied. Among them, you will acquire a working knowledge of traditional materials and techniques as well as working with new media and technology.

You will analyse artists and designers from the past and present and use sources to inspire your own work. You will use skills learned to interpret, convey and synthesise your ideas and feelings through art, craft and design.

Students with AS or A2 Level Art have a wide range of possible career and Higher Education courses to choose from.

Art at advanced level is specifically required for entry into Colleges of Art, Design and Architecture and is regarded as an entrance qualification for a number of College and University courses.

Qualification: **AS / A2 Level**

Exam Board: **WJEC**

Course Director: **Mrs Mary Mason-Bernardi**

Subject Staff: **Mrs Katy Jones**

Option: **4**



Qualification: **AS / A2 Level**  
Exam Board: **WJEC**  
Course Director: **Mr Andrew Searson**  
Subject Staff: **Mr Andrew Searson**  
**Mrs Harriet Craddock Jones**  
Option: **1**



# Music

## Cerddoriaeth

A Level Music allows students to develop sufficient expertise for further study and to promote an appreciation and enjoyment of music. Whilst considerable commitment is required, the rewards are worthwhile. The deeper knowledge and appreciation of music gained will arm students with lifetime skills and give access to the wide ranging music scene which exists within school, locally and around the country.

Extra Curricular activities include:

- School, County, 4 Counties, North Wales and National ensembles
- Selected concert visits;
- Free Instrumental tuition and option to gain additional qualifications with Associated Board Practical Examinations.

Music combines well with many subject areas:

- As a Performing/Creative Art for closely related further study in Art, Dance and Drama;
- Increasingly with Sciences in the light of modern technology;
- Traditionally with English and Modern Languages.

Music may be studied at University or Music Conservatoire.

Careers to consider include teaching, performing, broadcasting, journalism, the recording industry, publishing, library work, retail trade, concert management, musical instrument technology, music therapy, music in the armed services, arts administration and many other avenues within the arts.

*"I enjoy Music because it allows me to be creative whilst enhancing my musical skills on the piano. The use of technology supports me in improving my own performance and understanding." - Holly*



# Computer Science

## Cyfrifiadureg

This qualification encourages students and allows participants to become proficient programmers, developing a broad range of programming skills and knowledge and understanding of computing systems.

**Academic Criteria:** Computer Science GCSE Grade B or above, Maths Grade B or above and experience in Computer Programming in Python, Visual Basic, Java or C

### During this course students will develop:

- The fundamental principles and concepts of computer science, including logic, algorithms and data representation;
- the ability to analyse problems in computational terms through practical experience;
- the capacity for thinking creatively, innovatively, analytically, logically and critically;
- mathematical skills in binary and boolean algebra;
- understanding legal and cultural opportunities and risks of digital technology.

Qualification: **AS / A2 Level**

Exam Board: **WJEC**

Course Director: **Mr Carl Mitchell**

Subject Staff: **Mr Carl Mitchell**  
**Miss Rachel Kirk**

Option: **4**



*"I like how the Computer Science teachers offer help whenever you need it, making the subject fun and more straightforward even when doing more challenging work." - Emlyn*

Qualification: **AS / A2 Level**

Exam Board: **WJEC**

Course Director: **Mr Philip Barnes**

Subject Staff: **Mr Philip Barnes  
Miss Paula Jones  
Mrs Susan Woodal**

Option: **2**

# Design & Technology

## Dylunio a Thechnoleg

As a 3D designer you are at the crossroads of a number of skills. You need creativity, in order to imagine the shape and function of the object, but you'll also need to know about manufacturing process, materials and environmental issues.

Your A Level studies covers these main topics:-

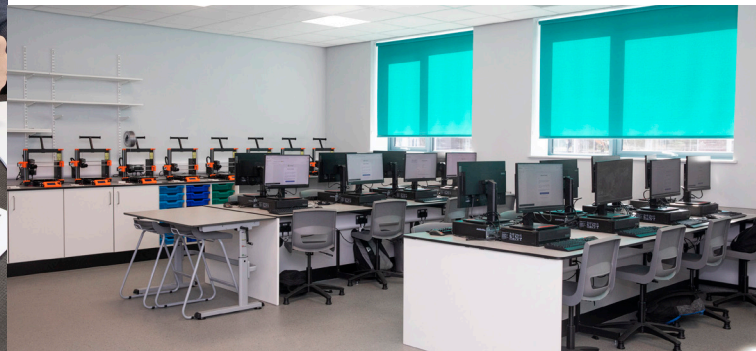
In '**Materials, Components and Application**' - you'll look at materials, production processes and the impact of cost and design.

In '**Learning through Designing and Making**' you'll produce some coursework using your own design with a range of materials and media.

In the second year you'll get to grips with '**Design and Manufacture**' - helping you to appreciate the relationship between design and technology, or form and function. '**Design and Making in Practice**' is the practical, coursework part.

You'll make an object and record the process that you went through.

This course could take you into **architecture, teaching, manufacturing, advertising or engineering.**





# BTEC Level 3 Sport Chwaraeon BTEC Lefel 3

Overall this subject is based on the interaction between the theory and practice of sport in industry and will provide an excellent foundation for students who wish to pursue careers in teaching and coaching, sports development, the leisure industry, recreational management, the health and fitness industry and professional sport.

This course is a mixture of examination based units and course work.

Students can opt for this subject as a Single Award or Double Award.

The National Certificate in Sport is worth one full A Level.

The National Diploma in Sport is worth 2 full A Levels.

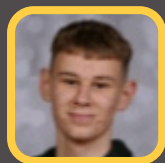
Qualification: **Level 3**

Exam Board: **Edexcel**

Course Director: **Mrs Sarah Thomas**

Subject Staff: **Mrs Sarah Thomas**  
**Mr Nick O'Connell**  
**Mrs Ceri Ainsley**

Option: **4**



*"Learning about the skeletal and muscular system in BTEC Sport is very interesting. The practical element of BTEC Sport has a focus that is relevant to the theoretical aspects in the classroom." - Hayden*

Qualification: **AS / A2 Level**

Exam Board: **WJEC**

Course Director: **Mrs Shan Williams**

Subject Staff: **Mrs Shan Williams**

Option: **3**

# Health, Care & Childcare Iechyd, Gofal a Gofal Plant

A Level Health and Social Care will comprise of four units in total over the two years of study. In Year 12 these are:

- Promoting health and wellbeing
- Supporting health, wellbeing and resilience in Wales

In Year 13, students follow the childhood pathway:

- Theoretical perspectives of children and young people's development
- Supporting the development, health, well-being and resilience of children and young people

Assessment is by means of 50% examination and 50% non-exam assessment.

Course content will include topics such as concepts of health and wellbeing, social and economic determinants of health, trends, strategies and health legislation, government initiatives, and services to support health and wellbeing in Wales.

This subject equips students with the skills required for higher education and aims to create independent learners that can make informed decisions about further learning opportunities or continuing into related career choices. It complements a wide range of other A-level / BTEC/Diploma courses and can lead to careers such as midwifery, nursing, physiotherapy, teaching, social care, education, counselling, occupational therapy, community and health development.



*"Health, Care and Childcare is enjoyable and the teachers are really supportive. It is a stepping stone to a future career in the health service." - Connie*



# Physical Education

## Addysg Gorfforol

A Level Physical Education takes a multidisciplinary approach in developing an understanding of many different areas of sport. This course allows students to build on existing knowledge and learn about new aspects of sport in detail including Exercise Physiology, Biomechanics, the Coaching Process, Sports Psychology, Skill Acquisition and Sport in Society.

Students should be participating in a sport regularly and to a good standard as this course applies theory to practical performances. Participation must be as a performer and as a coach or official in Year 12. Recorded evidence will be necessary.

Overall, this course is based on interaction of theory and practice of Physical Education and will provide an excellent foundation for students who wish to pursue a career in teaching and coaching, sports science, physiotherapy, sports development, the leisure industry, recreational management and professional sport.

Qualification: **AS / A2 Level**

Exam Board: **WJEC**

Course Director: **Mrs Beccy Rowlands**

Subject Staff: **Mrs Beccy Rowlands**  
**Mr Nick O'Connell**  
**Mr Stephen Gadie**

Option: **1**



*"The P.E. course is amazing. I get to learn about how my body works and how to enhance my own performance. Analysis and knowledge such as recovery rates and diet are essential to my future aims." - Evan*

Qualification: **Level 3 Diploma**  
Exam Board: **WJEC**  
Course Director: **Mrs Maxine Molloy**  
Subject Staff: **Mrs Maxine Molloy**  
Option: **1**

# WJEC Level 3 Diploma in Food Science and Nutrition

## CBAC Diploma Lefel 3 mewn Gwyddor Bwyd a Maeth

An understanding of food science and nutrition is relevant to many industries and job roles. Care providers and nutritionists in hospitals use this knowledge, as do sports coaches and fitness instructors. Hotels and restaurants, food manufacturers and government agencies also use this understanding to develop menus, food products and policies support healthy eating initiatives. Many employment opportunities within the field of food science and nutrition are available.

### Qualification structure and content

The WJEC Level 3 Diploma in Food Science and Nutrition is made up of four units:

- Meeting the Nutritional Needs of Specific Groups
- Ensuring Food is Safe to Eat
- Experimenting to Solve Food Production Problems
- Current Issues in Food Science and Nutrition
- Skills to Ensure your own Dietary Health and Wellbeing

### Learning experience

- Skills required for independent learning and development
- A range of generic and transferable skills
- The ability to solve problems
- The skills of project based research, development and presentation

All units within the WJEC Level 3 Diploma in Food Science and Nutrition are vocationally relevant to the food production industry.



### Progression

Together with relevant Level 3 qualifications such as AS and A Levels learners will gain the required knowledge to progress to higher education degree courses, such as:

**Food Science, Food Technology, Hospitality and Catering, Healthcare, Nursing, Health and Social care, Sport Science and Teaching**



# BTEC Business

## BTEC Busnes

BTEC Business enables students to gain both theoretical understanding of the business world while developing practical 'soft skills' necessary for the real world of work.

In year 1 you will become familiar with the environment in which businesses make effective use of resources and how to successfully market to different target audiences.

Year 2 gives students the opportunity to develop crucial accountancy skills and the opportunity to gain real work experience through the Work Experience module.

The course is assessment through 42% internal controlled assessments and 58% synoptic external assessments. We work with the Chamber of Commerce in the North West and Wales which gives students the opportunity to network with business sponsors and interaction with real successful business and entrepreneurs.

Qualification: **BTEC Business**  
Exam Board: **EDEXCEL**  
Course Director: **Miss Beth Wray**  
Subject Staff: **Miss Lauren Robinson**  
**Mr Jordan Rowlands**  
**Miss Beth Wray**

Option: 4



*"I enjoy Business because it enhances life skills and the work is very important. The teachers create an atmosphere that is conducive to success in the future." - Millie*

Qualification: **Applied Certificate and Diploma in Criminology**

Exam Board: **WJEC**

Course Director: **Mr Thomas Bryan**

Subject Staff: **Mr Thomas Bryan**

Option: **1**

# Applied Certificate and Diploma in Criminology

## Tystysgrif a Diploma Gymhwysol mewn Trosedddeg

Criminology will appeal to students who are interested in criminal justice and may be considering careers in related areas. Criminology combines well with a variety of subject areas such as Law, Sociology and Psychology.

Criminology is the study of the nature, extent, causes, and consequences of crime and criminal behaviour in society. We also consider the nature of the criminal justice system, and the experiences of those involved in it – including offenders, victims, police officers and others.

Topics covered are: Changing Awareness of Crime, Criminological Theories, Crime Scene to Courtroom, Crime and Punishment. The course draws on theories, case studies and engagement with professionals.

So if you are interested in:

- Why not all types of crime are alike?
- What different types of crime take place in our society?
- How do we decide what behaviour is criminal?
- What is the difference between criminal behaviour and deviance?
- How do we explain why people commit crime?
- What happens to those who commit a crime?
- Why and how do we punish people?
- What organisations do we have in our society to control criminality?

The Certificate and Diploma will give you all this, and an excellent foundation for degree or vocational qualifications.



*"The content in Criminology is so interesting and the teachers are very supportive." - Jess*



# Economics

# Economeg

Economics is a social science that studies the allocation of scarce resources. It is a course aimed at learners that are interested in the economic impact of current affairs. You might be wondering:

### Have you wondered:

- What causes a cost of living crisis?
- How does a cut in taxation impact the economy?
- Why do industries keep going on strike?
- Why is Brexit still in the news?
- How might AI change how businesses operate?

**If you are, Economics tries to provide answers to these questions.**

The course is split into two key strands:

- Microeconomics which focuses on decision-making by individuals and firms within the economy
- Macroeconomics which focuses on the economy as a whole

During the course you will develop an understanding of economic concepts and theories through critical consideration of current economic issues, problems and institutions that affect everyday life, drawing on local, national and global contexts.

The course is 100% examination - 40% at AS and 60% at A Level.

The subject complements a range of subjects including Business, Geography, History, Maths, RS and the Sciences.

Qualification: **AS / A2 Level**

Exam Board: **WJEC**

Course Director: **Miss Lauren Robinson**

Subject Staff: **Miss Lauren Robinson**  
**Mr Jordan Rowlands**

Option: **3**



Qualification: **AS / A2 Level**

Exam Board: **WJEC**

Course Director: **Mr Andrew Hodgson**

Subject Staff: **Mrs Hannah Hughes**  
**Mr James Fowles**

Option: **2**

# Geography

## Daearyddiaeth

Geography is the study of the Earth and its human population. At A Level you will study the physical environment, the impacts of human activity and relationships between nations.

### Course Summary:

AS Geography Year 12: Changing Places and Changing Landscapes.

A2 Geography Year 13: Global Systems and Global Governance.

Contemporary Themes in Geography.

Independent Investigation.

A - Level geographers develop the key skills associated with research, problem-solving and analysis in both science and humanities. Assessment methods include data response questions and extended writing. Fieldwork is an integral part of the course. Given the diverse nature of the topics studied, A-Level Geography provides a firm foundation for further education and future careers.

## 6 Reasons to Study Geography

- 1 TRANSFERABLE SKILLS**  
Studying geography helps develop a range of important transferable skills including research, communication, critical thinking, team work, data analysis, problem solving and much more.
- 2 IT'S IMPORTANT**  
Understanding the world in which we live is vitally important to mankind. Only by studying our planet may we predict and manage potential hazards in the future.
- 3 BROAD CAREER CHOICE**  
Studying geography opens the door to a wide range of exciting careers, including teaching, tourism, town planning, landscape architecture, conservation, recycling and much more.
- 4 PERSONAL DEVELOPMENT**  
Studying geography allows you to develop a range of personal skills for life, including time management, dealing with uncertainty, flexibility, creativity, problem solving and self-confidence.
- 5 CULTURAL AWARENESS**  
Every aspect of a culture is affected by its geography. By studying geography, you are more able to understand and appreciate the diversity of cultures around the world.
- 6 TRAVEL**  
By understanding geography, you will get even more from your travel experiences as you have a greater appreciation for the world around you.



"I enjoy Geography as it amplifies my knowledge how the world works environmentally and socially. The subject has never been as relevant as it is in today's world." - Milo



# History

## Hanes

It is not a requirement that you have studied History as GCSE in order to take A Level History, as a number of the topics offered are likely to be new to most students. It is more important that you have an enquiring mind, an interest in the past and its relevance to current affairs and an ability to communicate your ideas effectively.

History isn't just about learning facts and dates, far from it! As well as studying those important periods in history and the fascinating effect they have had on the world, you will also develop a variety of skills which are highly coveted and of benefit beyond the study of History. Consequently, History complements the study of most other A Level subjects, from the other Humanities and English to Science and Maths.

Studying History will help develop skills in analysis and evaluation and communication, both oral and written. History is about solving puzzles, seeing the bigger picture, making connections and drawing conclusions. Studying History is about being perceptive and critical, knowing the difference between truth and opinion and about forming your own opinions using well supported and developed arguments.

It is due to the wide variety of skills that you develop through the study of History that universities consider the subject in high regard. History is seen as a highly useful qualification for a variety of Higher Educational and Career choices, providing an excellent foundation for a number of popular careers, including journalism, law, business, accountancy and teaching, to name but a few.

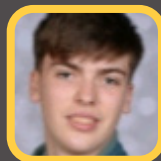
Qualification: **AS / A2 Level**

Exam Board: **WJEC**

Course Director: **Miss Ffion Byrne**

Subject Staff: **Miss Sarah Edwards  
Mrs Helen Cadman  
Miss Ffion Byrne  
Miss Emma Edwards**

Option: **3**



*"I enjoy History, it lets me learn about the past whilst gaining really useful, transferrable skills. The teachers are enthusiastic and passionate about their subject too." - Sam*

Qualification: **AS / A2 Level**

Exam Board: **WJEC**

Course Director: **Miss Sarah Edwards**

Subject Staff: **Miss Sarah Edwards**  
**Miss Ffion Byrne**  
**Miss Naomi Huxley**

Option: **4**

# Politics

## Gwleidyddiaeth

Why study Politics? Simply because it affects everything you do! The age you can marry, drink alcohol, join the armed forces, vote and drive is all decided by politicians. They also decide how loudly you can play music, whether you stand up or sit down at football matches, what you study in school and so much more that affects your daily lives.

This course allows students to develop a good understanding of Welsh, British, and International politics. At a time of enormous political tension and change in the world, students will find the debates which are central to this subject fascinating. This subject is highly prized by universities and links well with other Humanities, English, Business and Law courses.

This course will appeal to those students who want to become better informed citizens and who have an interest and want to explore and develop their own political beliefs and opinions in particular. This course will appeal to students who want to know why Wales and the rest of the UK are governed as they are.

Students with AS or A2 Level Politics have a wide range of possible career and Higher Education opportunities open to them.

You will learn skills which are in great demand by employers and universities, such as:

- development of written and oral communication;
- development of problem solving and evaluation;
- researching and analysing information from different sources;
- working independently and as part of a group.





# Psychology

## Seicoleg

Psychology is an intriguing and complex study of the workings of the human mind and behaviour. Studying Psychology will allow you to gain an understanding of the underpinnings of a wide range of behaviours, such as their biological, social, psychological, cognitive and developmental explanations.

Psychology will be of particular relevance to those who:

- want to find out more about the link between people's behaviour and their environment;
- enjoy exploring topics which reflect current contemporary issues;
- enjoy planning and carrying out investigations to look for patterns in behaviour;
- have achieved success in English Language, Mathematics and Biology at GCSE level.

Topics studied across both AS and A2 level include relationships and happiness, criminal behaviour, schizophrenia, autism, eye-witness testimony, therapies including dream analysis and phobias.

Progression from studying this subject will lead you to a wide range of courses at university and the transferable skills and knowledge you will gain will give you an excellent grounding for an array of career opportunities.

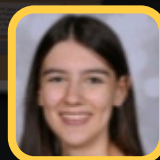
Qualification: **AS / A2 Level**

Exam Board: **WJEC**

Course Director: **Mrs Nicole Trueman**

Subject Staff: **Mrs Nicole Trueman**  
**Miss Lisa Jones**

Option: **3**



*"I really enjoy Psychology as I love learning about how the human brain works. The teachers are supportive and make the lessons fun." - Lucy*

Qualification: **AS / A2 Level**

Exam Board: **WJEC**

Course Director: **Mrs Gemma Doran**

Subject Staff: **Mrs Gemma Doran**  
**Mrs Emma Whitehurst**

Option: **1**

# Religious Studies

## Astudiaethau Crefyddol

This is an exciting course giving you the opportunity to study some of the fundamental philosophical and ethical questions which people have always asked about life. You will have the opportunity to gain a deeper awareness and understanding of religion and its influence on society.

If you:

- enjoy debate and putting forward well argued cases;
- are interested in what people consider right or wrong, in the way in which they decide how they ought to act or what their duty is;
- want to broaden science or an advanced studies to include a humanities subject.
- have an interest in religion in general or a specific faith, or if you wish to follow an ethical approach to religion;
- want to develop a wide range of transferable skills.

Religious studies develops highly marketable, transferable skills in analysis, evaluation and persuasive writing.

The skills developed in this course are particularly useful for careers in law, education, social work, politics, medicine, administration or the media.





# Cymraeg

## Welsh

The course will assist you to become a more independent learner in preparation for the world of work or Higher Education. You will be learning to communicate to a very high level in the language and you will learn about further aspects of Welsh life and culture.

### Llafar / Speaking

By the end of the course, if you work with enthusiasm, you will be able to hold detailed conversations in Welsh. You will also be able to understand others who use the language. You will be expected to use resources like S4C and language apps to help you do this successfully. As part of the course you will study a Welsh film and discuss this in an exam.

### Darllen / Reading

You will be expected to read, both independently and in class. You will read articles, stories, poems and a drama which you will be expected to approach critically.

### Ysgrifennu / Writing

You will be expected to show that you are able to write in a number of different ways from essays to translations. You will complete coursework on a subject of personal interest.

### Pam Dewis Cymraeg? / Why Choose Cymraeg?

If you are interested in the Welsh language, Wales and its culture, then you will enjoy this course. Bilingualism is a key skill in Wales and Europe in the 21st Century. You may benefit particularly from the course if you intend to work in the fields of education, law, health, tourism, journalism or media.

Welsh is a growing requirement in the world of work. Not only will you gain an A-level qualification but you will stand out from the crowd with level 3 skills in a second language.

Qualification: **AS / A2 Level**

Exam Board: **WJEC**

Course Director: **Mrs Helen Wareing**

Subject Staff: **Mrs Helen Wareing**  
**Mr Sam Brown**  
**Miss Anna Jones**

Option: **3**



*Cymraeg has been a very interesting subject at A level; expanding my knowledge in both Welsh language and culture. I know feel confident communicating bilingually. The A Level Welsh teachers are so supportive. This subject has created opportunities for bursaries and scholarships in universities. I know it will be so valuable for me in my future career, whatever I choose to do - Georgia*

### Gweithgareddau a Thripiâu All-Gyrsiol /Extra Curricular Activities

As part of the course students will have the opportunity to use and improve their Welsh by attending a 3 day language course in Glan Llyn, visit the capital city of Cardiff for a weekend stay and also watch a Welsh drama performance in Clwyd Theatr Cymru.

Qualification: **AS / A2 Level**

Exam Board: **WJEC**

Course Director: **Ms Ciara Brennan**

Subject Staff: **Mrs Connie Lumsdon-Davies**  
**Miss Victoria O'Neil**

Option: **2**

# French

## Ffrangeeg

Languages are increasingly essential to career success within Europe and the world. A Level French is a significant asset to your CV since so many careers value high level language proficiency; not just careers in international trade, diplomacy and global tourism, but also marketing, business, healthcare, journalism, media and education.

The A Level French course is designed to broaden your knowledge of contemporary francophone society and develop your language competence across the four skills of reading, listening, writing and speaking. Throughout the course, we will build on your existing knowledge and skills, develop a high level of fluency in spoken and written French and provide both challenge and enjoyment. The small class size will ensure that students are thoroughly prepared for examinations.

Students studying French at AS or A2 Level may have the opportunity to travel with us to a French-speaking country as part of a study tour – this is proven to enhance cultural understanding and target language confidence.

Although there is no specific course entry requirement, we strongly suggest that candidates should aim to achieve a grade B or above at GCSE.

Students can strongly benefit from French AS Level as a free-standing qualification as well as further study in the A2 year of the course. French works effectively as an A Level combined with other subjects, such as science, business, English or history, and will often help students to demonstrate their transferable skills when applying to university or jobs, even in other fields.





# German

## Almaeneg

The future hasn't been written yet, but if it had, there can be little doubt that the ability to speak German well would be a significant advantage. Germany is regarded as a true European superpower, and our previous A level candidates all say their language acquisition has served them well as they have gone on to excel in various professions including the following: Hospitality and Tourism, International Travel, International Media, Entertainment, Journalism, Engineering (Airbus and others), Teaching, Armed Forces, Interpreting, Forensic Science, Business, Politics.

Quite apart from the financial and professional reward that German studies can bring, the challenge and enjoyment of engaging with contemporary and cultural content whilst developing confidence and social skills remains an attractive prospect to most. Opting for this course will ensure you reach a high level of fluency and accuracy in the spoken and written language, whilst developing first rate comprehension and problem-solving skills through listening and reading activities.

Students in Year 12 usually have the wonderful opportunity to participate in a trip to Berlin, gain an excellent grounding in the grammar of the language and undertake an in depth study of a popular modern German film. Relatively small group sizes allow us to prepare extremely thoroughly for examinations. At AS level the oral component is worth 12% of the overall A level qualification, while the listening, reading, translation and film essay paper is worth 28%. As we move into the second year, the oral paper is worth a further 18%, the listening, reading and translation paper is worth 30%, and finally the critical response to the set text is worth 12%. The AS level can, of course, be a free-standing qualification, should the candidate so wish.

Although there is no specific course entry requirement, we strongly suggest that candidates should aim to achieve a B grade or above at GCSE.

Qualification: **AS / A2 Level**

Exam Board: **WJEC**

Course Directors: **Mr Paul Edwards**

Subject Staff: **Miss Anna Jones**  
**Mr Paul Edwards**

**Mrs Connie Lumsdon-Davies**

Option: **2**



Qualification: **AS / A2 Level**

Exam Board: **WJEC**

Course Director: **Ms Ciara Brennan**

Subject Staff: **Ms Ciara Brennan**

**Miss Beth Wray**

Option: **2**

# Spanish Sbaeneg

The Languages for The Future report puts Spanish as the number one language required by the U.K. over the next 25 years. Languages are increasingly in demand for career success within Europe and beyond. Spanish is a language of worldwide importance, over 500 million people speak Spanish, and it is spoken in many countries around the globe. Learning Spanish will give you a significant advantage in terms of employment opportunities as well as providing challenge and enjoyment throughout the course.

The Spanish A level course will allow you to achieve a high level of fluency in spoken and written Spanish and you will also develop excellent comprehension and problem-solving skills through listening and reading activities. You will broaden your knowledge of the contemporary society and cultural background of Spain and a wide range of other Spanish-speaking countries. Students become truly global citizens through this course where they develop their intercultural understanding and deepen their knowledge of geo-political issues.

Students in Year 12 will have the opportunity to participate in a study trip to Spain, will gain an excellent grounding in the grammar of the language and will undertake an in depth study of a contemporary Spanish film. Our small group sizes mean that students are thoroughly prepared for examinations. The AS course can be a free-standing qualification or it can lead on to further study in the second year when students continue to A level.

Whether you want to use Spanish for work, further study, training or leisure this course will equip you with the skills and knowledge to communicate at an advanced level.

Although there is no specific course entry requirement, we strongly suggest that candidates should aim to achieve a grade B or above at GCSE.





# English Language

## Saesneg Iaith

English Language is an exciting and interesting course which gives you insight into how language connects to society. English language is a demanding course, however it gives you the freedom to explore your own topics and be creative in addition to learning evaluative approaches to the language surrounding us.

The course includes the study of how writers and speakers use language to suit different audiences and purposes, in the present day and in the past.

*For example:* We also look at how language is used electronically, in texting and on websites, and at how people communicate with each other in speech. Through the study of these topics you will develop your analytical skills and your knowledge and understanding of English vocabulary and grammar. English Language also enables students to develop their writing skills. Students learn to write in a variety of different forms. Both the AS and A2 Years involve studying theories about language, such as how children learn to speak and how and why language changes.

English Language is a great all round A level, showing a high level of communication skills, which can lead to a huge variety of degree choices and future careers, such as:

- Media
- Business
- Languages
- Working with Children
- Management
- Journalism
- Language Therapy
- Teaching

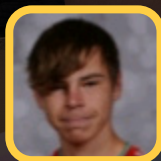
Qualification: **AS / A2 Level**

Exam Board: **WJEC**

Course Director: **Mrs Gemma Blakeley**

Subject Staff: **Mrs Ceri McVeigh**  
**Miss Laura Hauton**  
**Mrs Natalie Spragg**

Option: **1**



"The English Language course is really interesting. It opens a lot of doors in the future for employment opportunities."  
- Lewis

Qualification: **AS / A2 Level**

Exam Board: **WJEC**

Course Director: **Mrs Gemma Blakeley**

Subject Staff **Mrs Gemma Blakeley**

Year 12 (AS): **Mrs Natalie Spragg**

Subject Staff **Mrs Gemma Blakeley**

Year 13 (A2): **Mrs Laura Davies**

Option: **4**

# English Literature

## Llenyddiaeth Saesneg

Literature reflects, shapes and documents our world. It is a gateway to history, humanity and artistic endeavour throughout the centuries. If you choose to study English Literature at A level, you choose to study the novels, poetry and drama that have been at the heart of society.

If you are interested in literature and general reading, the analysis of ideas and attitudes, have good general knowledge and a willingness to debate, then English Literature will be the ideal subject for you. It is a popular, successful and enjoyable subject which has specific relevance to careers in teaching:

Because Advanced Level English Literature entails a sophisticated level of intellectual and academic discipline the subject is highly regarded as an entrance qualification for courses in universities and colleges.

It combines well with Law, Arts, Humanities, Social Sciences and Languages.

### **Possible career pathways include:**

Teaching; journalism; law; management; administration and all aspects of the arts including radio, television, theatre and film industries.





# Further Mathematics Mathemateg Bellach

Students who are particularly enthusiastic about Mathematics may take Further Mathematics as well as Mathematics.

The course is designed for students who have a particular flair for and enjoyment of the subject.

Further Mathematics is an essential choice if you wish to study Mathematics at a top university. Many universities also ask for Further Mathematics A Level for Engineering courses.

There are no controlled assessments. In addition to the 4 units for A Level Mathematics, students will be assessed by examination in 5 more Further Mathematics units, including some of the following topics:

Further Pure Mathematics (complex numbers, hyperbolic trigonometry, matrices, polar co-ordinates, series, group theory);

Statistics (looking at how to analyse and interpret data);

Mechanics (modelling real life physical situations mathematically and finding solutions – much of this module is also taught in AS Physics);

Students intending to study Further Mathematics **MUST** take A level Mathematics also and should have a grade A\* at GCSE.

Qualification: **AS / A2 Level**

Exam Board: **WJEC**

Course Director: **Mrs Lindsey Thompson**

Subject Staff: **Mrs Katherine Moss**  
**Mrs Lindsey Thompson**  
**Mr David Davies**

Option: **3**



Qualification: **AS / A2 Level**

Exam Board: **WJEC**

Course Director: **Mrs Lindsey Thompson**

Subject Staff: **Mr Eryl Evans, Miss Ceri Roberts  
Mrs Katherine Moss, Mr David Davies  
Mrs Gail Davies  
Mrs Lindsey Thompson  
Mrs Alex Peacock**

Option: **1**

# Mathematics

## Mathemateg

The A Level Mathematics course begins by building on the topics that you have studied at GCSE. It will further develop your ability to solve problems by applying mathematical arguments and logic and extend your range of mathematical skills to solve more difficult, unstructured problems. Whilst studying mathematics you will be expected to construct solutions through the appropriate use of precise, logical, clear statements. Trigonometry and graph skills will be especially useful to you throughout the AS and A2; increasing responsibility for your own learning and the evaluation of your mathematical development.

There are no controlled assessments. Students will be assessed by examination in 4 compulsory units, 2 at AS Level and 2 at A2 Level. The units will cover both Pure and Applied, (Statistical and Mechanical Mathematics).

Prospective students should have a natural talent for and thoroughly enjoy Mathematics. A Level Mathematics is a very demanding course and those embarking on it should be prepared to invest a **substantial** amount of time and effort outside of lessons. **The minimum grade required to join the course is a grade A at GCSE Mathematics.**

All students joining the course are expected to ensure that they fully understand the contents of the 'Induction Booklet' issued to them. This knowledge is assessed in week three of the course.



*"I find the skills learned in Maths whilst problem solving and using logic to be very applicable to other subjects. It provides great opportunities to further develop your mathematical skills, is challenging and thought provoking." - Natasha*



# Biology

## Bywydeg

The course aims to develop a lifelong interest in, and enjoyment of, the study of living organisms, promoting respect for all forms of life. Students will develop both an understanding of biological facts and principles, and an appreciation of their significance in the living world.

The Biology AS course consists of 2 theory units worth 20% each. During the first unit you will be studying basic Biochemistry and Organisation ensuring a smooth transition from GCSE.

The second unit explores biodiversity through physiological adaptation in a number of organisms. During Year 12 and 13 students will build on experimental skills in preparation for practical skills assessment of performance in experiments over a period of time.

The A level course includes the AS units and 2 further theory units. A2 units account for 25% of the qualification and a further 10% from practical exams. Students will study energy release, microbiology and homeostasis in various organisms. They will be able to understand genetics, evolution and environmental issues.

Biology A level is an essential subject to take if you are planning to study:

- **Medicine;**
- **Dentistry;**
- **Veterinary Medicine;**
- **Other biomedical courses such as Physiotherapy**
- **Pharmacology**
- **Nursing**

Qualification: **AS / A2 Level**

Exam Board: **WJEC**

Course Director: **Mrs Victoria Peran**

Subject Staff: **Mrs Carlotta Dunn**  
**Mr Jaime Rasmussen**  
**Mrs Helena Wade**

Option: **4**



Qualification: **AS / A2 Level**

Exam Board: **WJEC**

Course Director: **Dr Amanda Heath**

Subject Staff: **Mrs Kathryn Jackson**

Option: **3**

# Chemistry

## Cemeg

A Level Chemistry is a course designed to cater for candidates who wish to continue with further studies in Chemistry as well as those requiring a chemical background for study in other subject areas.

The course presents some of the knowledge, concepts, techniques and structural relationships of Chemistry under the broad areas of Organic, Physical and Inorganic Chemistry.

Organic Chemistry involves the study of carbon compounds whilst Physical Chemistry concentrates on areas such as Atomic Structure, Bonding and Energetics. Inorganic Chemistry covers a detailed look at the patterns of reactions. Practical work also forms an important part of the course in order to establish basic experimental techniques.

Chemistry is regarded as a discipline that requires logical thinking and a clear and organised mind. It uses and develops a host of skills which employers regard as being invaluable in the workplace, including problem solving, team working, numeracy, communication and practical skills. It is a subject which is at the heart of a variety of science based careers such as medicine, veterinary sciences, dentistry and pharmacy. Alternatively, an A Level in Chemistry can also be used as a stepping stone to a non-scientific career in fields as diverse as business, law, accounting and management.





# Physics

## Ffiseg

There are many ways of describing the beauty and elegance of Physics and the incredible value that it has delivered for society, ever-present in the everyday things around us. Physics helps us unlock the mysteries of our universe and the world we live in, and is one of our most powerful enablers of innovation and discovery.

But Physics is also central to everyday life. Physicists are actively collaborating with other researchers and applying their knowledge and technical skills in response to the major challenges of our time, such as sustainable sources of future energy, understanding our changing climate and global food security. Their efforts can be found in everyday technology, such as A.I, smartphones and GP devices, which would not exist today without Physics research.

Qualification: **AS / A2 Level**

Exam Board: **WJEC**

Course Director: **Mr Jeremy Roberts**

Subject Staff: **Mr Jeremy Roberts**  
**Mr Neil Eve**  
**Mr Andrew Duffy**

Option: **2**



# Year 12 Provisional Programme Of Study September 2025

You should complete and return the Application Form to your GROUP TUTOR or the school by Friday 7<sup>th</sup> March 2025

In the current financial climate, it is likely that courses with less than an uptake of 10 will not run. **Consequently, we ask students to consider a reserve option, should it be the case that one of their chosen options does not run.**

Once initial applications are in, we will inform students before the end of the summer term if their chosen course is unable to run.

- This Option Pattern is based on guidelines on subject combinations from Careers and Higher Education sources.
- All courses are **AS / A2** and Level 3 courses
- Select the course of your choice. As a guide you should select **ONE** option in **AT LEAST THREE** option lines.
- We may well move subjects to minimise clashes

OPTION 1	OPTION 2	OPTION 3	OPTION 4
CRIMINOLOGY ENGLISH LANGUAGE FOOD & NUTRITION MATHEMATICS MUSIC PHYSICAL EDUCATION RELIGIOUS STUDIES	BTEC ACTING DESIGN TECHNOLOGY GEOGRAPHY PHYSICS FRENCH GERMAN SPANISH	CHEMISTRY FURTHER MATHS CYMRAEG HISTORY BTEC DANCE/PRODUCTION PSYCHOLOGY HEALTH, CARE & CHILDCARE ECONOMICS	COMPUTER SCIENCE BIOLOGY BTEC BUSINESS ART & DESIGN ENGLISH LITERATURE POLITICS BTEC SPORT

ALL COURSES ARE SUBJECT TO VIABLE NUMBERS OPTING AND STAFFING RESOURCES AVAILABLE

There will be an additional option line to accommodate extra classes and resolve clashes where possible.

All students will take part in the Welsh Baccalaureate Qualification at Advanced Level.

English and Mathematic resits will be available. There may be some movement of subjects to minimise any clashes.



# Application Form / Ffurflen Gais

Name: ..... Address: .....

Tutor Group: .....  
.....  
.....  
.....  
.....

Please detach this form and return to Castell Alun High School by Friday 7th March 2025

Date of Birth: ..... Postcode: .....

Present School: ..... Email: .....

Tutor Group: ..... Tel: .....

*[if Currently attending Castell Alun High School]*

## INTENDED COURSE OF STUDY AT CASTELL ALUN HIGH SCHOOL

SUBJECT	LEVEL - AS, BTEC etc.	REASON FOR CHOICE

### RESERVE OPTION

--	--	--

# Subject Criteria AS Level

Please find below the subject entry requirements as defined by the Learning Areas in school. We believe that these are the minimum grades required to be successful at AS and A2 level. If you achieve grades close to these you may still be able to study a subject following a successful interview with the appropriate teachers.

SUBJECT	ACADEMIC CRITERIA
Art and Design	GCSE Art and Design, Grade B. GCSE English Language Grade C.
Biology	Biology - GCSE Biology, Grade B or above or GCSE Science Double Award, Grade BB, GCSE English Language and Mathematics, Grade B.
Business (BTEC)	GCSE English Language, Grade B or above. GCSE Mathematics, Grade C or above.
Computer Science	Computer Science GCSE Grade B or above or Maths grade B or above and experience in Computer Programming in Python, Visual Basic, Java or C.
Criminology	5 GCSE Grades, Grade C or above
Chemistry	Chemistry - GCSE Chemistry, Grade B or above or GCSE Science Double Award, Grade BB, GCSE English Language and Mathematics, Grade B.
Economics	GCSE Mathematics, Grade B or above. GCSE English Language, Grade C or above. GCSE Business Studies would be advantageous.
English Language	GCSE English Language, Grade B or above.
English Literature	GCSE English Literature, Grade B or above. English Language, Grade B or above. Students have to have an interest in reading.
Food Science & Nutrition (Level 3 Diploma)	GCSE Food Preparation and Nutrition or GCSE Food Technology/Hospitality and Catering, Grade C or above. GCSE English Language, Grade C or above.
French	GCSE French at Grade B or above.
Further Mathematics	GCSE Mathematics, Grade A* or above.
Geography	GCSE Geography: Grade B or above. GCSE Mathematics, Grade B or above.
German	GCSE German at Grade B or above.
Government & Politics	English Language, Grade C or above and preferably another Humanities subject.
Health & Social Care	English Language, Grade C or above and a Grade C or above in Science is desirable for Double Award students. Prior study of Health and Social Care will be useful but not essential.
History	GCSE History, Grade B or above, though in individual cases previous study of subject is not essential.
Mathematics	GCSE Mathematics, Grade A or above.
Music	GCSE Music, Grade B or above.
Performing Arts	GCSE & / or above in English Language and a strong interest in the Performing Arts.
Physical Education	B in the theory paper of GCSE Physical Education. B Grade in a Science GCSE if Physical Education not studied at GCSE. Student needs to participate in at least 1 sport outside school. GCSE English Language, Grade C or above.
Physics	Physics - GCSE Grade B or GCSE Science Double Award, Grade BB.
Product Design	GCSE Product Design, Grade B or above. GCSE English Language, Grade C or above. GCSE Mathematics, Grade C or above.
Psychology	GCSE Biology, Grade C or above and GCSE English Language, Grade C or above.
Religious Studies	Grade C or above at Full Course or Short Course GCSE and GCSE English Language, Grade C or above.
Spanish	GCSE Spanish at Grade B or above.
Sport BTEC	GCSE Physical Education, Grade C or above if studied at GCSE. GCSE English Language, Grade C or above. Sport or Physical Education does not have to have been studied previously.
Welsh	GCSE Welsh at Grade B or above.





## Our Open Evening will take place on Thursday 6th February



All the courses on offer will be represented by subject leaders and students who will be available to provide more information relating to their courses and to answer any specific questions you may have. There will also be the opportunity to tour the school and speak to current students about their learning experience in the Sixth Form.

If you do have any questions, please do not hesitate to contact the school directly via email at [main@castellalun.flintshire.sch.uk](mailto:main@castellalun.flintshire.sch.uk)



☎ 01978 760 238

✉ main@castellalun.flintshire.sch.uk

🌐 www.castellalun.com

📱 @CastellAlun

Castell Alun High School,  
Fagl Lane, Hope,  
Flintshire LL12 9PY